

For Research Use Only

# BCRP/ABCG2 Recombinant antibody

Catalog Number:83835-1-RR



## Basic Information

<b>Catalog Number:</b> 83835-1-RR	<b>GenBank Accession Number:</b> BC021281	<b>Purification Method:</b> Protein A purification
<b>Size:</b> 100ul , Concentration: 1000 ug/ml by Nanodrop;	<b>GeneID (NCBI):</b> 9429	<b>CloneNo.:</b> 240959A4
<b>Source:</b> Rabbit	<b>UNIPROT ID:</b> Q9UNQ0	<b>Recommended Dilutions:</b> WB 1:5000-1:50000
<b>Isotype:</b> IgG	<b>Full Name:</b> ATP-binding cassette, sub-family G (WHITE), member 2	
<b>Immunogen Catalog Number:</b> AG25911	<b>Calculated MW:</b> 70 kDa	
	<b>Observed MW:</b> 68-72 kDa	

## Applications

<b>Tested Applications:</b> WB, ELISA	<b>Positive Controls:</b> WB : HEK-293 cells, U-251 cells, MCF-7 cells, SGC-7901 cells, HepG2 cells, mouse brain tissue
<b>Species Specificity:</b> human, mouse	

## Background Information

BCRP (breast cancer resistance protein) confers a broad spectrum of drug resistance and the expression of BCRP is enhanced in several cancer cell models. It has ATPase activity and belongs to a family of multiple drug resistant proteins. Data also indicated that BCRP might be an early marker for some stem cells.

## Storage

**Storage:**  
Store at -20°C. Stable for one year after shipment.  
**Storage Buffer:**  
PBS with 0.02% sodium azide and 50% glycerol pH 7.3.  
Aliquoting is unnecessary for -20°C storage

\*\*\* 20ul sizes contain 0.1% BSA

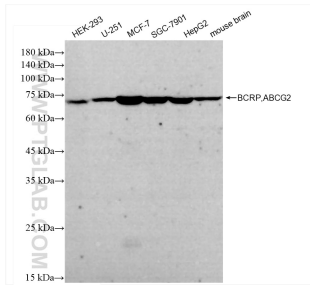
For technical support and original validation data for this product please contact:

T: 1 (888) 4PTGLAB (1-888-478-4522) (toll free in USA), or 1(312) 455-8498 (outside USA)

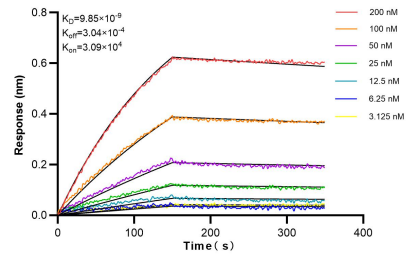
E: [proteintech@ptglab.com](mailto:proteintech@ptglab.com)  
W: [ptglab.com](http://ptglab.com)

This product is exclusively available under Proteintech Group brand and is not available to purchase from any other manufacturer.

## Selected Validation Data



Various lysates were subjected to SDS PAGE followed by western blot with 83835-1-RR (BCRP, ABCG2 antibody) at dilution of 1:10000 incubated at room temperature for 1.5 hours.



Biolayer interferometry (BLI) kinetic assays of 83835-1-RR against Human BCRP, ABCG2 were performed. The affinity constant is 9.85 nM.