

For Research Use Only

BCRP/ABCG2 Recombinant antibody, PBS Only (Capture)

Catalog Number: 83835-1-PBS



Basic Information

Catalog Number: 83835-1-PBS	GenBank Accession Number: BC021281	Purification Method: Protein A purification
Size: 100ug, Concentration: 1 mg/ml by Nanodrop;	GeneID (NCBI): 9429	CloneNo.: 240959A4
Source: Rabbit	UNIPROT ID: Q9UNQ0	
Isotype: IgG	Full Name: ATP-binding cassette, sub-family G (WHITE), member 2	
Immunogen Catalog Number: AG25911	Calculated MW: 70 kDa	
	Observed MW: 68-72 kDa	

Applications

Tested Applications:
WB, Cytometric bead array, Indirect ELISA

Species Specificity:
human, mouse

Product Information

83835-1-PBS targets BCRP/ABCG2 as part of a matched antibody pair:

MP00805-1: 83835-1-PBS capture and 83835-2-PBS detection (validated in Cytometric bead array)

Unconjugated rabbit recombinant monoclonal antibody in PBS only (BSA and azide free) storage buffer at a concentration of 1 mg/mL, ready for conjugation. Created using Proteintech's proprietary in-house recombinant technology. Recombinant production enables unrivalled batch-to-batch consistency, easy scale-up, and future security of supply.

This conjugation ready format makes antibodies ideal for use in many applications including: ELISAs, multiplex assays requiring matched pairs, mass cytometry, and multiplex imaging applications. Antibody use should be optimized by the end user for each application and assay.

Background Information

BCRP (breast cancer resistance protein) confers a broad spectrum of drug resistance and the expression of BCRP is enhanced in several cancer cell models. It has ATPase activity and belongs to a family of multiple drug resistant proteins. Data also indicated that BCRP might be an early marker for some stem cells.

Storage

Storage:
Store at -80°C.

Storage Buffer:
PBS Only

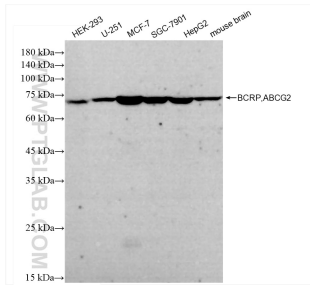
For technical support and original validation data for this product please contact:

T: 1 (888) 4PTGLAB (1-888-478-4522) (toll free
in USA), or 1(312) 455-8498 (outside USA)

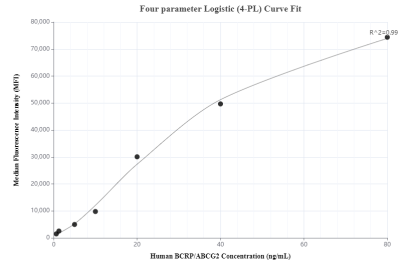
E: proteintech@ptglab.com
W: ptglab.com

This product is exclusively available under Proteintech Group brand and is not available to purchase from any other manufacturer.

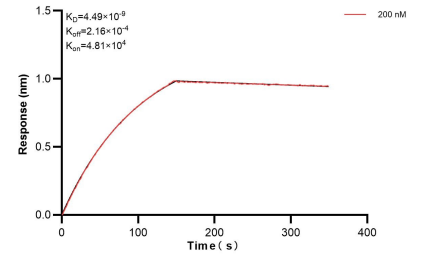
Selected Validation Data



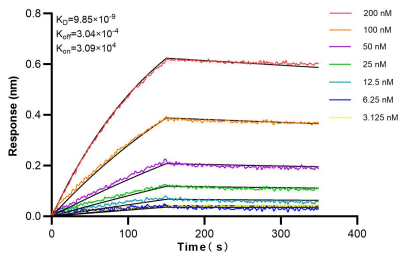
Various lysates were subjected to SDS PAGE followed by western blot with 83835-1-RR (BCRP,ABC2 antibody) at dilution of 1:10000 incubated at room temperature for 1.5 hours. This data was developed using the same antibody clone with 83835-1-PBS in a different storage buffer formulation.



Cytometric bead array standard curve of MP00805-1, BCRP/ABC2 Recombinant Matched Antibody Pair, PBS Only. Capture antibody: 83835-1-PBS. Detection antibody: 83835-2-PBS. Standard: Ag25911. Range: 0.625-80 ng/mL.



Bi-layer interferometry (BLI) kinetic assay of 83835-1-PBS against Human BCRP/ABC2 was performed. The affinity constant is 4.49 nM.



Bi-layer interferometry (BLI) kinetic assays of 83835-1-RR against Human BCRP,ABC2 were performed. The affinity constant is 9.85 nM.