

For Research Use Only

# CNNM4 Recombinant antibody

Catalog Number:83824-5-RR



## Basic Information

<b>Catalog Number:</b> 83824-5-RR	<b>GenBank Accession Number:</b> BC063295	<b>Purification Method:</b> Protein A purification
<b>Size:</b> 100ul , Concentration: 1000 ug/ml by Nanodrop;	<b>GeneID (NCBI):</b> 26504	<b>CloneNo.:</b> 240873C1
<b>Source:</b> Rabbit	<b>UNIPROT ID:</b> Q6P4Q7	<b>Recommended Dilutions:</b> IF/ICC 1:200-1:800
<b>Isotype:</b> IgG	<b>Full Name:</b> cyclin M4	
<b>Immunogen Catalog Number:</b> AG5121	<b>Calculated MW:</b> 87 kDa	

## Applications

<b>Tested Applications:</b> IF/ICC, ELISA	<b>Positive Controls:</b> IF/ICC : LNCaP cells, MCF-7 cells
<b>Species Specificity:</b> human	

## Background Information

Ancient conserved domain-containing protein 4/cyclin M4 (CNNM4), a membrane protein that stimulates Mg<sup>2+</sup> efflux, binds phosphatase of regenerating liver (PRL), which is frequently overexpressed in malignant human cancers (PMID: 25347473). CNNM4 is predominant in the brain, bone marrow, immune system, and especially abundant in the intestinal tract. CNNM4 localizes at the basolateral membrane of the intestinal epithelia and mediates transcellular Mg<sup>2+</sup> transport (PMID: 27006114).

## Storage

**Storage:**  
Store at -20°C. Stable for one year after shipment.  
**Storage Buffer:**  
PBS with 0.02% sodium azide and 50% glycerol pH 7.3.  
Aliquoting is unnecessary for -20°C storage

\*\*\* 20ul sizes contain 0.1% BSA

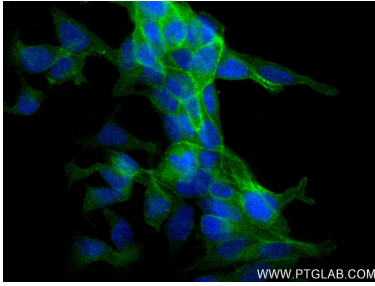
For technical support and original validation data for this product please contact:

T: 1 (888) 4PTGLAB (1-888-478-4522) (toll free  
in USA), or 1(312) 455-8498 (outside USA)

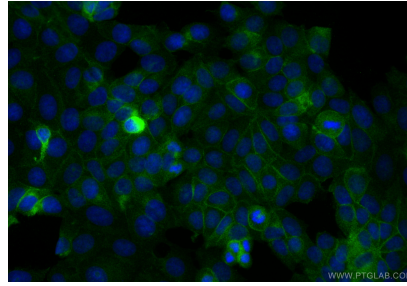
E: [proteintech@ptglab.com](mailto:proteintech@ptglab.com)  
W: [ptglab.com](http://ptglab.com)

This product is exclusively available under Proteintech Group brand and is not available to purchase from any other manufacturer.

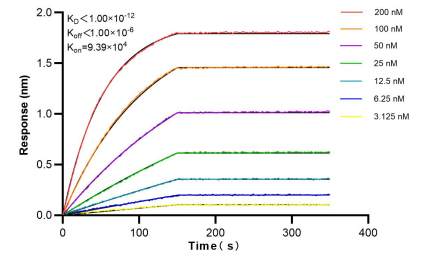
## Selected Validation Data



Immunofluorescent analysis of (4% PFA) fixed LNCaP cells using CNNM4 antibody (83824-5-RR, Clone: 240873C1) at dilution of 1:400 and CoraLite®488-Conjugated AffiniPure Goat Anti-Rabbit IgG(H+L) (SA00013-2).



Immunofluorescent analysis of (4% PFA) fixed MCF-7 cells using CNNM4 antibody (83824-5-RR, Clone: 240873C1) at dilution of 1:500 and CoraLite®488-Conjugated Goat Anti-Rabbit IgG(H+L) (SA00013-2).



Biolayer interferometry (BLI) kinetic assays of 83824-5-RR against Human CNNM4 were performed. The affinity constant is below 1 pM.