

For Research Use Only

# CNNM4 Recombinant antibody, PBS Only

Catalog Number: 83824-5-PBS



## Basic Information

<b>Catalog Number:</b> 83824-5-PBS	<b>GenBank Accession Number:</b> BC063295	<b>Purification Method:</b> Protein A purification
<b>Size:</b> 100ug, Concentration: 1 mg/ml by Nanodrop;	<b>GeneID (NCBI):</b> 26504	<b>CloneNo.:</b> 240873C1
<b>Source:</b> Rabbit	<b>UNIPROT ID:</b> Q6P4Q7	
<b>Isotype:</b> IgG	<b>Full Name:</b> cyclin M4	
<b>Immunogen Catalog Number:</b> AG5121	<b>Calculated MW:</b> 87 kDa	

## Applications

**Tested Applications:**  
IF/ICC, ELISA

**Species Specificity:**  
human

## Background Information

Ancient conserved domain-containing protein 4/cyclin M4 (CNNM4), a membrane protein that stimulates Mg<sup>2+</sup> efflux, binds phosphatase of regenerating liver (PRL), which is frequently overexpressed in malignant human cancers (PMID: 25347473). CNNM4 is predominant in the brain, bone marrow, immune system, and especially abundant in the intestinal tract. CNNM4 localizes at the basolateral membrane of the intestinal epithelia and mediates transcellular Mg<sup>2+</sup> transport (PMID: 27006114).

## Storage

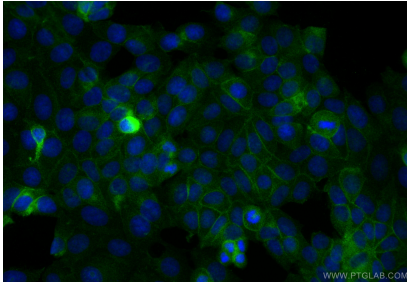
**Storage:**  
Store at -80°C.

**Storage Buffer:**  
PBS Only

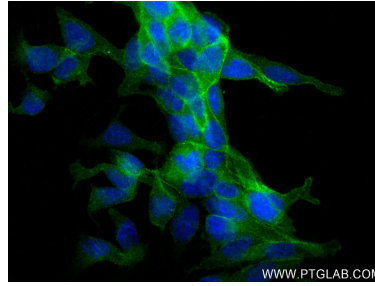
For technical support and original validation data for this product please contact:  
T: 1 (888) 4PTGLAB (1-888-478-4522) (toll free in USA), or 1(312) 455-8498 (outside USA)      E: proteintech@ptglab.com  
W: ptglab.com

This product is exclusively available under Proteintech Group brand and is not available to purchase from any other manufacturer.

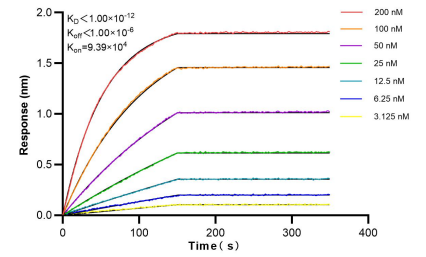
## Selected Validation Data



Immunofluorescent analysis of (4% PFA) fixed MCF-7 cells using CNNM4 antibody (83824-5-RR, Clone: 240873C1 ) at dilution of 1:500 and CoraLite®488-Conjugated Goat Anti-Rabbit IgG(H+L) (SA00013-2). This data was developed using the same antibody clone with 83824-5-PBS in a different storage buffer formulation.



Immunofluorescent analysis of (4% PFA) fixed LNCaP cells using CNNM4 antibody (83824-5-RR, Clone: 240873C1 ) at dilution of 1:400 and CoraLite®488-Conjugated AffiniPure Goat Anti-Rabbit IgG(H+L) (SA00013-2). This data was developed using the same antibody clone with 83824-5-PBS in a different storage buffer formulation.



Biolayer interferometry (BLI) kinetic assays of 83824-5-RR against Human CNNM4 were performed. The affinity constant is below 1 pM.