

For Research Use Only

CNNM4 Recombinant antibody

Catalog Number: 83824-4-RR

Featured Product



Basic Information

Catalog Number:

83824-4-RR

Size:

100ul, Concentration: 1000 ug/ml by Nanodrop;

Source:

Rabbit

Isotype:

IgG

Immunogen Catalog Number:

AG5121

GenBank Accession Number:

BC063295

GeneID (NCBI):

26504

UNIPROT ID:

Q6P4Q7

Full Name:

cyclin M4

Calculated MW:

87 kDa

Observed MW:

90-100 kDa

Purification Method:

Protein A purification

CloneNo.:

240873E9

Recommended Dilutions:

WB 1:5000-1:50000

Applications

Tested Applications:

WB, ELISA

Species Specificity:

human

Positive Controls:

WB : HEK-293 cells, mouse testis tissue

Background Information

Ancient conserved domain-containing protein 4/cyclin M4 (CNNM4), a membrane protein that stimulates Mg²⁺ efflux, binds phosphatase of regenerating liver (PRL), which is frequently overexpressed in malignant human cancers (PMID: 25347473). CNNM4 is predominant in the brain, bone marrow, immune system, and especially abundant in the intestinal tract. CNNM4 localizes at the basolateral membrane of the intestinal epithelia and mediates transcellular Mg²⁺ transport (PMID: 27006114).

Storage

Storage:

Store at -20°C. Stable for one year after shipment.

Storage Buffer:

PBS with 0.02% sodium azide and 50% glycerol pH 7.3.

Aliquoting is unnecessary for -20°C storage

*** 20ul sizes contain 0.1% BSA

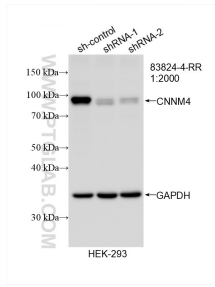
For technical support and original validation data for this product please contact:

T: 1 (888) 4PTGLAB (1-888-478-4522) (toll free in USA), or 1(312) 455-8498 (outside USA)

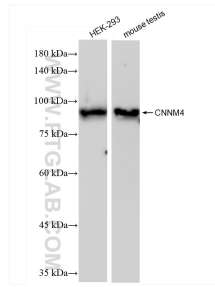
E: proteintech@ptglab.com
W: ptglab.com

This product is exclusively available under Proteintech Group brand and is not available to purchase from any other manufacturer.

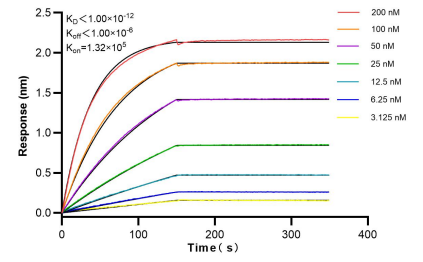
Selected Validation Data



WB result of CNNM4 antibody (83824-4-RR; 1:2000; incubated at room temperature for 1.5 hours) with sh-Control and sh-CNNM4 transfected HEK-293 cells.



Various lysates were subjected to SDS PAGE followed by western blot with 83824-4-RR (CNNM4 antibody) at dilution of 1:10000 incubated at room temperature for 1.5 hours.



Bioluminescence resonance energy transfer (BLI) kinetic assays of 83824-4-RR against Human CNNM4 were performed. The affinity constant is below 1 pM.