

For Research Use Only

CNNM4 Recombinant antibody, PBS Only (Capture)

Catalog Number: 83824-4-PBS

Featured Product



Basic Information

Catalog Number: 83824-4-PBS	GenBank Accession Number: BC063295	Purification Method: Protein A purification
Size: 100ug, Concentration: 1 mg/ml by Nanodrop;	GeneID (NCBI): 26504	CloneNo.: 240873E9
Source: Rabbit	UNIPROT ID: Q6P4Q7	
Isotype: IgG	Full Name: cyclin M4	
Immunogen Catalog Number: AG5121	Calculated MW: 87 kDa	
	Observed MW: 90-100 kDa	

Applications

Tested Applications:
WB, Cytometric bead array, Indirect ELISA

Species Specificity:
human

Product Information

83824-4-PBS targets CNNM4 as part of a matched antibody pair:

MP00802-3: 83824-4-PBS capture and 83824-2-PBS detection (validated in Cytometric bead array)

Unconjugated rabbit recombinant monoclonal antibody in PBS only (BSA and azide free) storage buffer at a concentration of 1 mg/mL, ready for conjugation. Created using Proteintech's proprietary in-house recombinant technology. Recombinant production enables unrivalled batch-to-batch consistency, easy scale-up, and future security of supply.

This conjugation ready format makes antibodies ideal for use in many applications including: ELISAs, multiplex assays requiring matched pairs, mass cytometry, and multiplex imaging applications. Antibody use should be optimized by the end user for each application and assay.

Background Information

Ancient conserved domain-containing protein 4/cyclin M4 (CNNM4), a membrane protein that stimulates Mg²⁺ efflux, binds phosphatase of regenerating liver (PRL), which is frequently overexpressed in malignant human cancers (PMID: 25347473). CNNM4 is predominant in the brain, bone marrow, immune system, and especially abundant in the intestinal tract. CNNM4 localizes at the basolateral membrane of the intestinal epithelia and mediates transcellular Mg²⁺ transport (PMID: 27006114).

Storage

Storage:
Store at -80°C.

Storage Buffer:
PBS Only

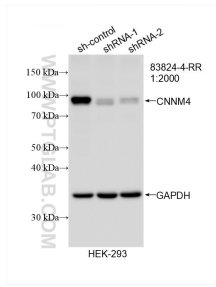
For technical support and original validation data for this product please contact:

T: 1 (888) 4PTGLAB (1-888-478-4522) (toll free in USA), or 1(312) 455-8498 (outside USA)

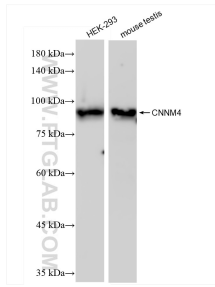
E: proteintech@ptglab.com
W: ptglab.com

This product is exclusively available under Proteintech Group brand and is not available to purchase from any other manufacturer.

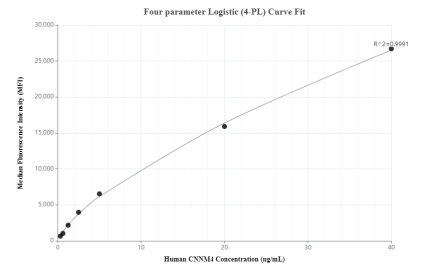
Selected Validation Data



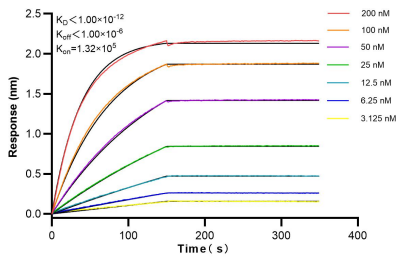
WB result of CNNM4 antibody (83824-4-RR; 1:2000; incubated at room temperature for 1.5 hours) with sh-Control and sh-CNNM4 transfected HEK-293 cells. This data was developed using the same antibody clone with 83824-4-PBS in a different storage buffer formulation.



Various lysates were subjected to SDS PAGE followed by western blot with 83824-4-RR (CNNM4 antibody) at dilution of 1:10000 incubated at room temperature for 1.5 hours. This data was developed using the same antibody clone with 83824-4-PBS in a different storage buffer formulation.



Cytometric bead array standard curve of MP00802-3, CNNM4 Recombinant Matched Antibody Pair, PBS Only. Capture antibody: 83824-4-PBS. Detection antibody: 83824-2-PBS. Standard: Ag5121. Range: 0.313-40 ng/mL.



Biolayer interferometry (BLI) kinetic assays of 83824-4-RR against Human CNNM4 were performed. The affinity constant is below 1 pM.