

For Research Use Only

SLC18A3 Recombinant antibody, PBS Only (Detector)



Catalog Number: 83819-1-PBS

Basic Information

Catalog Number: 83819-1-PBS	GenBank Accession Number: BC007765	Purification Method: Protein A purification
Size: 100ug , Concentration: 1 mg/ml by Nanodrop;	GeneID (NCBI): 6572	CloneNo.: 240687C11
Source: Rabbit	UNIPROT ID: Q16572	
Isotype: IgG	Full Name: solute carrier family 18 (vesicular acetylcholine), member 3	
Immunogen Catalog Number: AG25153	Calculated MW: 532 aa, 57 kDa	

Applications

Tested Applications:
Cytometric bead array, Indirect ELISA

Species Specificity:
human

Product Information

83819-1-PBS targets SLC18A3 as part of a matched antibody pair:

MP00780-2: 83819-2-PBS capture and 83819-1-PBS detection (validated in Cytometric bead array)

Unconjugated rabbit recombinant monoclonal antibody in PBS only (BSA and azide free) storage buffer at a concentration of 1 mg/mL, ready for conjugation. Created using Proteintech's proprietary in-house recombinant technology. Recombinant production enables unrivalled batch-to-batch consistency, easy scale-up, and future security of supply.

This conjugation ready format makes antibodies ideal for use in many applications including: ELISAs, multiplex assays requiring matched pairs, mass cytometry, and multiplex imaging applications. Antibody use should be optimized by the end user for each application and assay.

Storage

Storage:
Store at -80°C.

Storage Buffer:
PBS Only

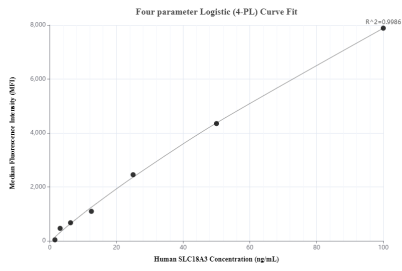
For technical support and original validation data for this product please contact:

T: 1 (888) 4PTGLAB (1-888-478-4522) (toll free in USA), or 1(312) 455-8498 (outside USA)

E: proteintech@ptglab.com
W: ptglab.com

This product is exclusively available under Proteintech Group brand and is not available to purchase from any other manufacturer.

Selected Validation Data



Cytometric bead array standard curve of MP00780-2, SLC18A3 Recombinant Matched Antibody Pair, PBS Only. Capture antibody: 83819-2-PBS. Detection antibody: 83819-1-PBS. Standard: Ag25153. Range: 1.563-100 ng/mL