

For Research Use Only

# KMO Recombinant antibody

Catalog Number:83812-1-RR



## Basic Information

<b>Catalog Number:</b> 83812-1-RR	<b>GenBank Accession Number:</b> BC005297	<b>Purification Method:</b> Protein A purification
<b>Size:</b> 100ul , Concentration: 1000 ug/ml by Nanodrop;	<b>GeneID (NCBI):</b> 8564	<b>CloneNo.:</b> 240586D3
<b>Source:</b> Rabbit	<b>UNIPROT ID:</b> O15229	<b>Recommended Dilutions:</b> WB 1:5000-1:50000 IHC 1:1000-1:4000
<b>Isotype:</b> IgG	<b>Full Name:</b> kynurenine 3-monooxygenase (kynurenine 3-hydroxylase)	
<b>Immunogen Catalog Number:</b> AG35029	<b>Calculated MW:</b> 486 aa, 56 kDa	
	<b>Observed MW:</b> 52-56 kDa	

## Applications

**Tested Applications:**  
WB, IHC, FC (Intra), ELISA

**Species Specificity:**  
human, mouse

**Note-IHC: suggested antigen retrieval with TE buffer pH 9.0; (\*) Alternatively, antigen retrieval may be performed with citrate buffer pH 6.0**

**Positive Controls:**

**WB :** MCF-7 cells,

**IHC :** mouse kidney tissue, mouse brain tissue, mouse heart tissue

## Background Information

KMO(Kynurenine 3-monooxygenase) is an NADPH-dependent flavin monooxygenase, catalysing the hydroxylation of the L-kynurenine to form L-3-hydroxykynurenine. KMO is a membrane protein located on the outer membrane of mitochondria. Tissue distribution studies have revealed that, in rats, highest enzyme activity is found in kidney and liver, with brain having the least activity in comparison to peripheral organs(PMID: 9237672).

## Storage

**Storage:**

Store at -20°C. Stable for one year after shipment.

**Storage Buffer:**

PBS with 0.02% sodium azide and 50% glycerol pH 7.3.

Aliquoting is unnecessary for -20°C storage

\*\*\* 20ul sizes contain 0.1% BSA

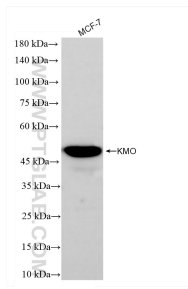
For technical support and original validation data for this product please contact:

T: 1 (888) 4PTGLAB (1-888-478-4522) (toll free in USA), or 1(312) 455-8498 (outside USA)

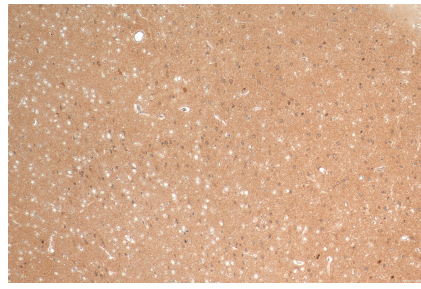
E: proteintech@ptglab.com  
W: ptglab.com

This product is exclusively available under Proteintech Group brand and is not available to purchase from any other manufacturer.

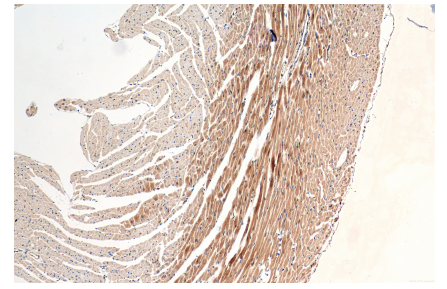
## Selected Validation Data



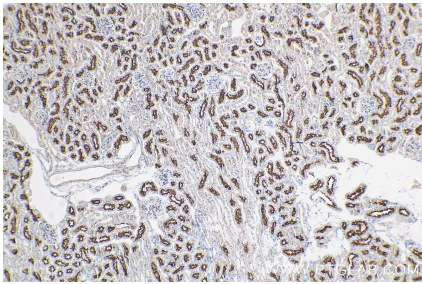
MCF-7 cells were subjected to SDS PAGE followed by western blot with 83812-1-RR (KMO antibody) at dilution of 1:20000 incubated at room temperature for 1.5 hours.



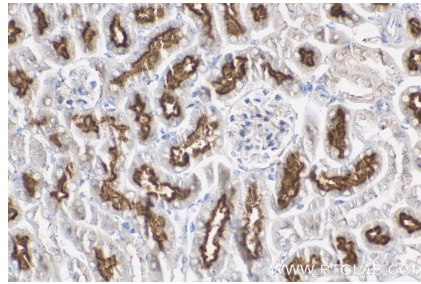
Immunohistochemical analysis of paraffin-embedded mouse brain tissue slide using 83812-1-RR (KMO antibody) at dilution of 1:400 (under 10x lens). Heat mediated antigen retrieval with Tris-EDTA buffer (pH 9.0).



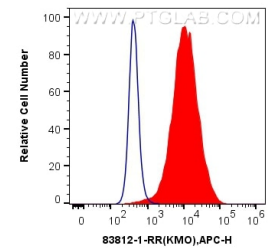
Immunohistochemical analysis of paraffin-embedded mouse heart tissue slide using 83812-1-RR (KMO antibody) at dilution of 1:400 (under 10x lens). Heat mediated antigen retrieval with Tris-EDTA buffer (pH 9.0).



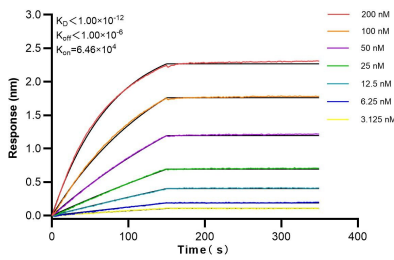
Immunohistochemical analysis of paraffin-embedded mouse kidney tissue slide using 83812-1-RR (KMO antibody) at dilution of 1:2000 (under 10x lens). Heat mediated antigen retrieval with Tris-EDTA buffer (pH 9.0).



Immunohistochemical analysis of paraffin-embedded mouse kidney tissue slide using 83812-1-RR (KMO antibody) at dilution of 1:2000 (under 40x lens). Heat mediated antigen retrieval with Tris-EDTA buffer (pH 9.0).



$1 \times 10^6$  MCF-7 cells were intracellularly stained with 0.25 ug KMO Recombinant antibody (83812-1-RR, Clone:240586D3) and APC-Conjugated AffiniPure Goat Anti-Rabbit IgG(H+L)(red), or 0.25 ug Isotype Control (blue). Cells were fixed with 4% PFA and permeabilized with Flow Cytometry Perm Buffer (PF00011-C).



Biolayer interferometry (BLI) kinetic assays of 83812-1-RR against Human KMO were performed. The affinity constant is below 1 pM.