

For Research Use Only

EGFR Recombinant antibody

Catalog Number:83806-1-RR



Basic Information

Catalog Number: 83806-1-RR	GenBank Accession Number: NM_005228	Purification Method: Protein A purification
Size: 100ul , Concentration: 1000 ug/ml by Nanodrop;	GeneID (NCBI): 1956	CloneNo.: 240603F10
Source: Rabbit	UNIPROT ID: P00533	Recommended Dilutions: WB 1:2000-1:10000 IHC 1:50-1:500 IF/ICC 1:200-1:800
Isotype: IgG	Full Name: epidermal growth factor receptor (erythroblastic leukemia viral (v-erb-b) oncogene homolog, avian)	
	Calculated MW: 134 kDa	
	Observed MW: 145-165 kDa	

Applications

Tested Applications: WB, IHC, IF/ICC, FC (Intra), ELISA	Positive Controls: WB : A549 cells, HeLa cells IHC : human placenta tissue, IF/ICC : A431 cells,
Species Specificity: human	
Note-IHC: suggested antigen retrieval with TE buffer pH 9.0; (*) Alternatively, antigen retrieval may be performed with citrate buffer pH 6.0	

Background Information

EGFR, also named as ERBB1, is a cell-surface receptor for members of the epidermal growth factor family (EGF-family) of extracellular protein ligands. Binding of the protein to a ligand induces receptor dimerization and tyrosine autophosphorylation and leads to cell proliferation. The gene resides on chromosome 7p12, encoding a 170 kDa membrane-associated glycoprotein. Recent studies have shown EGFR plays a critical role in cancer development and progression, including cell proliferation, apoptosis, angiogenesis, and metastatic spread. Mutations in this gene are associated with lung cancer.

Storage

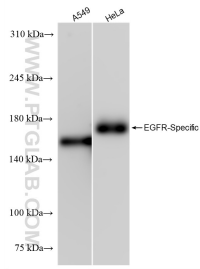
Storage:
Store at -20°C. Stable for one year after shipment.
Storage Buffer:
PBS with 0.02% sodium azide and 50% glycerol pH 7.3.
Aliquoting is unnecessary for -20°C storage

***** 20ul sizes contain 0.1% BSA**

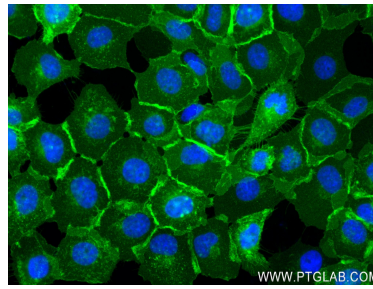
For technical support and original validation data for this product please contact:
T: 1 (888) 4PTGLAB (1-888-478-4522) (toll free in USA), or 1(312) 455-8498 (outside USA)
E: proteintech@ptglab.com
W: ptglab.com

This product is exclusively available under Proteintech Group brand and is not available to purchase from any other manufacturer.

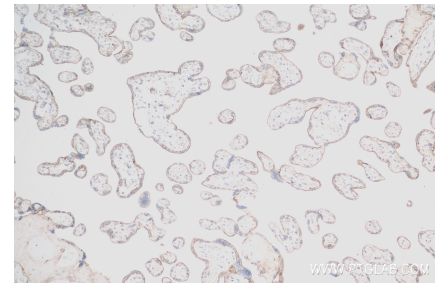
Selected Validation Data



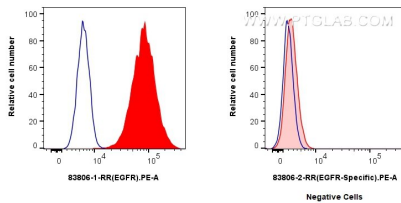
Various lysates were subjected to SDS PAGE followed by western blot with 83806-1-RR (EGFR antibody) at dilution of 1:5000 incubated at room temperature for 1.5 hours.



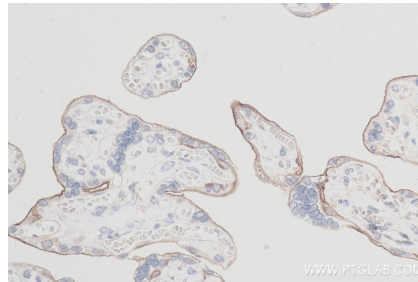
Immunofluorescent analysis of (4% PFA) fixed A431 cells using EGFR-Specific antibody (83806-1-RR, Clone: 240603F 10) at dilution of 1:400 and CoraLite®488-Conjugated AffiniPure Goat Anti-Rabbit IgG(H+L) (SA00013-2).



Immunohistochemical analysis of paraffin-embedded human placenta tissue slide using 83806-1-RR (EGFR antibody) at dilution of 1:200 (under 10x lens). Heat mediated antigen retrieval with Tris-EDTA buffer (pH 9.0).



1×10^6 A431 cells (left) or Jurkat cells (right) were intracellularly stained with 0.4 ug EGFR Recombinant antibody (83806-1-RR, Clone: 240603F 10) and PE-Conjugated Goat Anti-Rabbit IgG(H+L) (red), or 0.4 ug Isotype Control (blue). Cells were fixed with 4% PFA .



Immunohistochemical analysis of paraffin-embedded human placenta tissue slide using 83806-1-RR (EGFR antibody) at dilution of 1:200 (under 40x lens). Heat mediated antigen retrieval with Tris-EDTA buffer (pH 9.0).