

For Research Use Only

TBX21/T-bet Recombinant antibody, PBS Only (Capture)

Catalog Number: 83804-4-PBS



Basic Information

Catalog Number: 83804-4-PBS	GenBank Accession Number: BC039739	Purification Method: Protein A purification
Size: 100ug , Concentration: 1 mg/ml by Nanodrop;	GeneID (NCBI): 30009	CloneNo.: 240849D4
Source: Rabbit	ENSEMBL Gene ID: ENSG00000073861	
Isotype: IgG	UNIPROT ID: Q9UL17	
Immunogen Catalog Number: AG4618	Full Name: T-box 21	
	Calculated MW: 535 aa, 58 kDa	

Applications

Tested Applications:
Cytometric bead array, Sandwich ELISA, Indirect ELISA,
Sample test

Species Specificity:
human

Product Information

83804-4-PBS targets TBX21/T-bet as part of a matched antibody pair:

MP00748-1: 83804-4-PBS capture and 83804-5-PBS detection (validated in Cytometric bead array, Sandwich ELISA)

Unconjugated rabbit recombinant monoclonal antibody in PBS only (BSA and azide free) storage buffer at a concentration of 1 mg/mL, ready for conjugation. Created using Proteintech's proprietary in-house recombinant technology. Recombinant production enables unrivalled batch-to-batch consistency, easy scale-up, and future security of supply.

This conjugation ready format makes antibodies ideal for use in many applications including: ELISAs, multiplex assays requiring matched pairs, mass cytometry, and multiplex imaging applications. Antibody use should be optimized by the end user for each application and assay.

Storage

Storage:
Store at -80°C.
Storage Buffer:
PBS Only

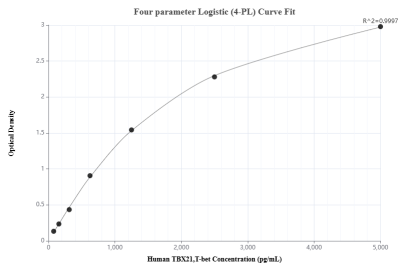
For technical support and original validation data for this product please contact:

T: 1 (888) 4PTGLAB (1-888-478-4522) (toll free
in USA), or 1(312) 455-8498 (outside USA)

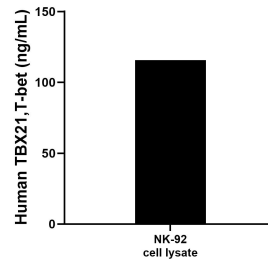
E: proteintech@ptglab.com
W: ptglab.com

This product is exclusively available under Proteintech Group brand and is not available to purchase from any other manufacturer.

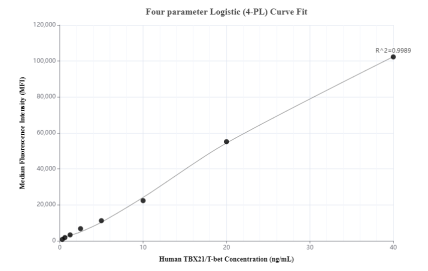
Selected Validation Data



Sandwich ELISA standard curve of MP00748-1, Human TBX21,T-bet Recombinant Matched Antibody Pair - PBS only. 83804-4-PBS was coated to a plate as the capture antibody and incubated with serial dilutions of standard Ag4618. 83804-5-PBS was HRP conjugated as the detection antibody. Range: 78.1-5000 pg/mL



NK-92 cell lysate was measured. The human TBX21,T-bet concentration of detected samples was determined to be 115.64 ng/mL (based on a 1.5 mg/mL extract load).



Cytometric bead array standard curve of MP00748-1, TBX21,T-bet Recombinant Matched Antibody Pair, PBS Only. Capture antibody: 83804-4-PBS. Detection antibody: 83804-5-PBS. Standard: Ag4618. Range: 0.313-40 ng/mL