

For Research Use Only

# CXCR1 Recombinant antibody

Catalog Number: 83801-4-RR



## Basic Information

**Catalog Number:**

83801-4-RR

**Size:**

100ul , Concentration: 1000 µg/ml by Nanodrop;

**Source:**

Rabbit

**Isotype:**

IgG

**GenBank Accession Number:**

NM\_000634

**GeneID (NCBI):**

3577

**UNIPROT ID:**

P25024

**Full Name:**

interleukin 8 receptor, alpha

**Calculated MW:**

40 kDa

**Observed MW:**

50 kDa

**Purification Method:**

Protein A purification

**CloneNo.:**

240819A11

**Recommended Dilutions:**

WB 1:5000-1:50000

## Applications

**Tested Applications:**

WB, ELISA

**Species Specificity:**

human

**Positive Controls:**

WB : Jurkat cells, fetal human brain tissue, Raji cells, HepG2 cells

## Background Information

CXCR1, also named CMKAR1, IL8RA, and CD181, belongs to the G-protein coupled receptor 1 family. It is a receptor to interleukin-8, a powerful neutrophil chemotactic factor. The binding of IL-8 to the receptor causes activation of neutrophils. CXCR1 binds to IL-8 with a high affinity and MGSA (GRO) with a low affinity.

## Storage

**Storage:**

Store at -20°C. Stable for one year after shipment.

**Storage Buffer:**

PBS with 0.02% sodium azide and 50% glycerol pH 7.3.

Aliquoting is unnecessary for -20°C storage

\*\*\* 20ul sizes contain 0.1% BSA

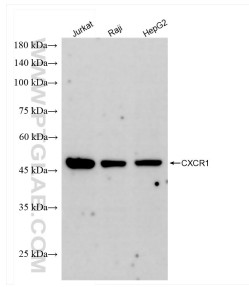
For technical support and original validation data for this product please contact:

T: 1 (888) 4PTGLAB (1-888-478-4522) (toll free in USA), or 1(312) 455-8498 (outside USA)

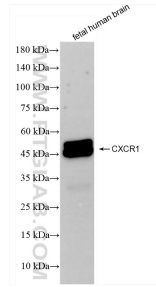
E: [proteintech@ptglab.com](mailto:proteintech@ptglab.com)  
W: [ptglab.com](http://ptglab.com)

This product is exclusively available under Proteintech Group brand and is not available to purchase from any other manufacturer.

## Selected Validation Data



Various lysates were subjected to SDS PAGE followed by western blot with 83801-4-RR (CXCR1 antibody) at dilution of 1:10000 incubated at room temperature for 1.5 hours.



fetal human brain tissue were subjected to SDS PAGE followed by western blot with 83801-4-RR (CXCR1 antibody) at dilution of 1:10000 incubated at room temperature for 1.5 hours.