

For Research Use Only

Cadherin-17 Recombinant antibody

Catalog Number:83793-5-RR



Basic Information

Catalog Number: 83793-5-RR	GenBank Accession Number: BC113464	Purification Method: Protein A purification
Size: 100ul , Concentration: 1000 µg/ml by Nanodrop;	GeneID (NCBI): 1015	CloneNo.: 240681B11
Source: Rabbit	UNIPROT ID: Q12864	Recommended Dilutions: WB 1:5000-1:50000 IHC 1:500-1:2000 IF-P 1:250-1:1000
Isotype: IgG	Full Name: cadherin 17, LI cadherin (liver-intestine)	
Immunogen Catalog Number: AG19488	Calculated MW: 832 aa, 92 kDa	
	Observed MW: 120 kDa	

Applications

Tested Applications:

WB, IHC, IF-P, ELISA

Species Specificity:

human, mouse

Note-IHC: suggested antigen retrieval with TE buffer pH 9.0; (*) Alternatively, antigen retrieval may be performed with citrate buffer pH 6.0

Positive Controls:

WB : mouse colon tissue,

IHC : human stomach cancer tissue, mouse colon tissue, human colon cancer tissue

IF-P : human stomach cancer tissue,

Background Information

Cadherin-17, also known as LI-cadherin, is a member of the cadherin superfamily. Cadherins are transmembrane proteins that mediate cell-cell adhesion, play important roles during embryogenesis, and are crucial for tissue morphogenesis and maintenance. Cadherin-17 is a component of the gastrointestinal tract and pancreatic ducts and is involved in intestinal peptide transport. It may also play a role in the morphological organization of liver and intestine.

Storage

Storage:

Store at -20°C. Stable for one year after shipment.

Storage Buffer:

PBS with 0.02% sodium azide and 50% glycerol pH 7.3.

Aliquoting is unnecessary for -20°C storage

*** 20ul sizes contain 0.1% BSA

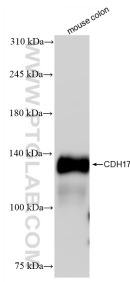
For technical support and original validation data for this product please contact:

T: 1 (888) 4PTGLAB (1-888-478-4522) (toll free in USA), or 1(312) 455-8498 (outside USA)

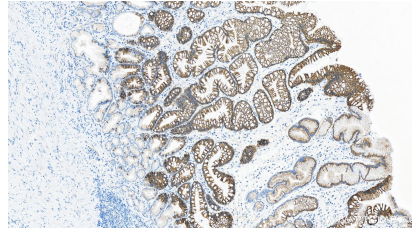
E: proteintech@ptglab.com
W: ptglab.com

This product is exclusively available under Proteintech Group brand and is not available to purchase from any other manufacturer.

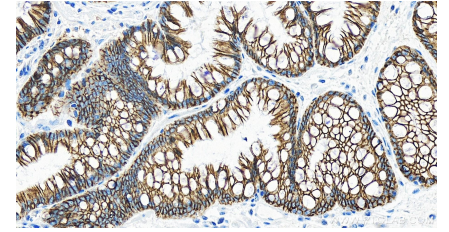
Selected Validation Data



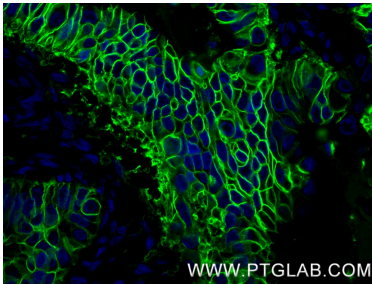
mouse colon tissue was subjected to SDS PAGE followed by western blot with 83793-5-RR (Cadherin-17 antibody) at dilution of 1:10000 incubated at room temperature for 1.5 hours.



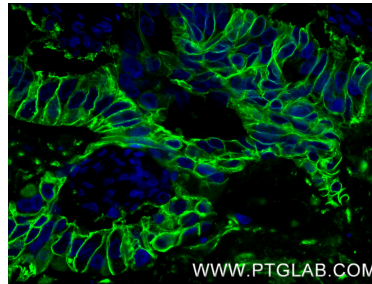
Immunohistochemical analysis of paraffin-embedded human stomach cancer tissue slide using 83793-5-RR (Cadherin-17 antibody) at dilution of 1:1000 (under 10x lens). Heat mediated antigen retrieval with Tris-EDTA buffer (pH 9.0).



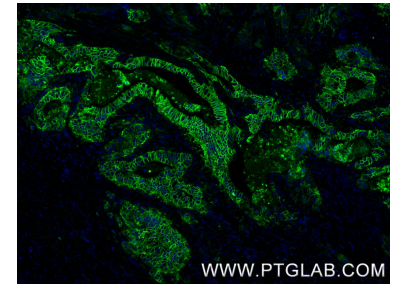
Immunohistochemical analysis of paraffin-embedded human stomach cancer tissue slide using 83793-5-RR (Cadherin-17 antibody) at dilution of 1:1000 (under 40x lens). Heat mediated antigen retrieval with Tris-EDTA buffer (pH 9.0).



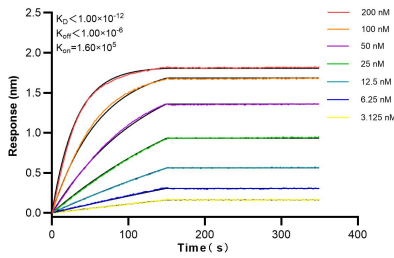
Immunofluorescent analysis of (4% PFA) fixed paraffin-embedded human stomach cancer tissue using Cadherin-17 antibody (83793-5-RR, Clone: 240681B11) at dilution of 1:500 and CoraLite®488-Conjugated Goat Anti-Rabbit IgG(H+L) (SA00013-2). Heat mediated antigen retrieval with Tris-EDTA buffer (pH 9.0).



Immunofluorescent analysis of (4% PFA) fixed paraffin-embedded human stomach cancer tissue using Cadherin-17 antibody (83793-5-RR, Clone: 240681B11) at dilution of 1:500 and CoraLite®488-Conjugated Goat Anti-Rabbit IgG(H+L) (SA00013-2). Heat mediated antigen retrieval with Tris-EDTA buffer (pH 9.0).



Immunofluorescent analysis of (4% PFA) fixed paraffin-embedded human stomach cancer tissue using Cadherin-17 antibody (83793-5-RR, Clone: 240681B11) at dilution of 1:500 and CoraLite®488-Conjugated Goat Anti-Rabbit IgG(H+L) (SA00013-2). Heat mediated antigen retrieval with Tris-EDTA buffer (pH 9.0).



Biolayer interferometry (BLI) kinetic assays of 83793-5-RR against Human Cadherin-17 were performed. The affinity constant is below 1 pM.