

For Research Use Only

CDH17 Recombinant antibody, PBS Only (Capture/Detector)

Catalog Number:83793-4-PBS



Basic Information

Catalog Number: 83793-4-PBS	GenBank Accession Number: BC113464	Purification Method: Protein A purification
Size: 100ug , Concentration: 1 mg/ml by Nanodrop;	GeneID (NCBI): 1015	CloneNo.: 240681F7
Source: Rabbit	UNIPROT ID: Q12864	
Isotype: IgG	Full Name: cadherin 17, LI cadherin (liver-intestine)	
Immunogen Catalog Number: AG19488	Calculated MW: 832 aa, 92 kDa	

Applications

Tested Applications:
Cytometric bead array, Sandwich ELISA, Indirect ELISA, Sample test

Species Specificity:
human

Product Information

83793-4-PBS targets CDH17 as part of a matched antibody pair:

MP00742-3: 83793-4-PBS capture and 83793-1-PBS detection (validated in Cytometric bead array)

MP00742-4: 83793-6-PBS capture and 83793-4-PBS detection (validated in Sandwich ELISA)

Unconjugated rabbit recombinant monoclonal antibody in PBS only (BSA and azide free) storage buffer at a concentration of 1 mg/mL, ready for conjugation. Created using Proteintech's proprietary in-house recombinant technology. Recombinant production enables unrivalled batch-to-batch consistency, easy scale-up, and future security of supply.

This conjugation ready format makes antibodies ideal for use in many applications including: ELISAs, multiplex assays requiring matched pairs, mass cytometry, and multiplex imaging applications. Antibody use should be optimized by the end user for each application and assay.

Storage

Storage:
Store at -80°C.
Storage Buffer:
PBS Only

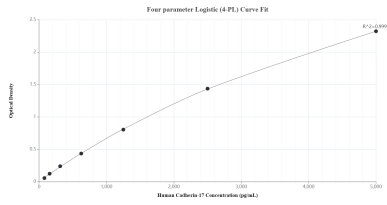
For technical support and original validation data for this product please contact:

T: 1 (888) 4PTGLAB (1-888-478-4522) (toll free in USA), or 1(312) 455-8498 (outside USA)

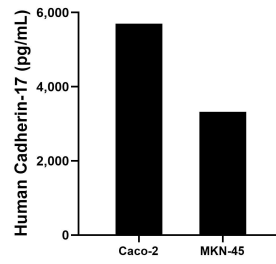
E: proteintech@ptglab.com
W: ptglab.com

This product is exclusively available under Proteintech Group brand and is not available to purchase from any other manufacturer.

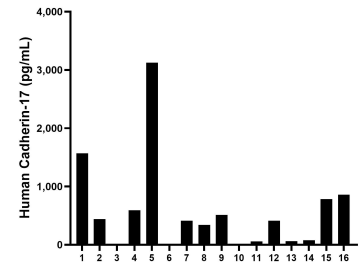
Selected Validation Data



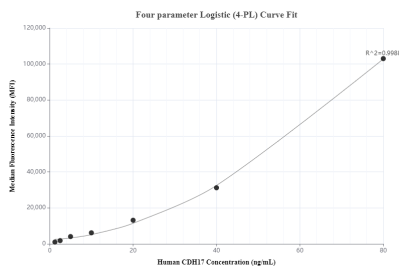
Sandwich ELISA standard curve of MP00742-4, Human Cadherin-17 Recombinant Matched Antibody Pair - PBS only. 83793-6-PBS was coated to a plate as the capture antibody and incubated with serial dilutions of standard Ag19488. 83793-4-PBS was HRP conjugated as the detection antibody. Range: 78.1-5000 pg/mL



The mean Cadherin-17 concentration was determined to be 5,702.2 pg/mL in Caco-2 cell extract based on a 3.4 mg/mL extract load and 3,322.0 pg/mL in MKN-45 cell extract based on a 9.5 mg/mL extract load.



Serum of sixteen individual healthy human donors was measured. The Cadherin-17 concentration of detected samples was determined to be 660.0 pg/mL with a range of 3.3 - 3,126.5 pg/mL.



Cytometric bead array standard curve of MP00742-3, CDH17/Cadherin-17 Recombinant Matched Antibody Pair, PBS Only. Capture antibody: 83793-4-PBS. Detection antibody: 83793-1-PBS. Standard: Ag19488. Range: 1.25-80 ng/mL