

For Research Use Only

# SCPEP1 Recombinant antibody

Catalog Number:83786-4-RR



## Basic Information

<b>Catalog Number:</b> 83786-4-RR	<b>GenBank Accession Number:</b> BC072405	<b>Purification Method:</b> Protein A purification
<b>Size:</b> 100ul , Concentration: 1000 ug/ml by Nanodrop;	<b>GeneID (NCBI):</b> 59342	<b>CloneNo.:</b> 240886B6
<b>Source:</b> Rabbit	<b>UNIPROT ID:</b> Q9HB40	<b>Recommended Dilutions:</b> WB 1:2000-1:16000 IHC 1:300-1:1200
<b>Isotype:</b> IgG	<b>Full Name:</b> serine carboxypeptidase 1	
<b>Immunogen Catalog Number:</b> AG31381	<b>Calculated MW:</b> 452 aa, 51 kDa	
	<b>Observed MW:</b> 33 kDa, 45-51 kDa	

## Applications

<b>Tested Applications:</b> WB, IHC, ELISA	<b>Positive Controls:</b> WB : U-251 cells, A431 cells IHC : human stomach cancer tissue,
<b>Species Specificity:</b> human	

**Note-IHC: suggested antigen retrieval with TE buffer pH 9.0; (\*) Alternatively, antigen retrieval may be performed with citrate buffer pH 6.0**

## Background Information

SCPEP1 encodes retinoid-inducible serine carboxypeptidase (PMID:12975309). SCPEP1 and Cathepsin A play roles in regulation of vasoconstriction via inactivation of endothelin-1 (PubMed:24586188). The protein is widely expressed during mouse embryogenesis by immunohistochemical (PubMed:16461364). Scapep1 is proteolytically cleaved to a mature enzyme which is smaller than 51 kDa (PMID:16461364).

## Storage

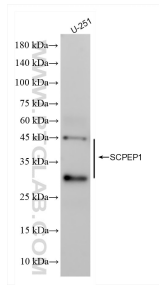
**Storage:**  
Store at -20°C. Stable for one year after shipment.  
**Storage Buffer:**  
PBS with 0.02% sodium azide and 50% glycerol pH 7.3.  
Aliquoting is unnecessary for -20°C storage

\*\*\* 20ul sizes contain 0.1% BSA

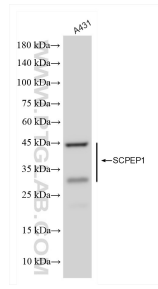
For technical support and original validation data for this product please contact:  
T: 1 (888) 4PTGLAB (1-888-478-4522) (toll free in USA), or 1(312) 455-8498 (outside USA) E: proteintech@ptglab.com W: ptglab.com

This product is exclusively available under Proteintech Group brand and is not available to purchase from any other manufacturer.

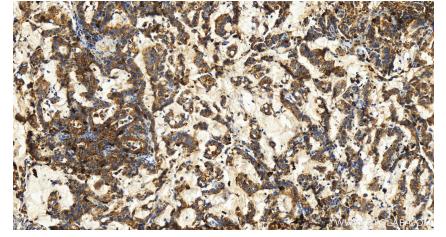
## Selected Validation Data



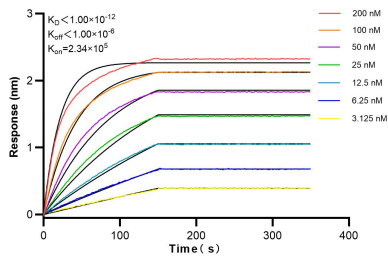
U-251 cells were subjected to SDS PAGE followed by western blot with 83786-4-RR (SCPEP1 antibody) at dilution of 1:8000 incubated at room temperature for 1.5 hours.



A431 cells were subjected to SDS PAGE followed by western blot with 83786-4-RR (SCPEP1 antibody) at dilution of 1:8000 incubated at room temperature for 1.5 hours.



Immunohistochemical analysis of paraffin-embedded human stomach cancer tissue slide using 83786-4-RR (SCPEP1 antibody) at dilution of 1:600 (under 20x lens). Heat mediated antigen retrieval with Tris-EDTA buffer(pH9).



Biolayer interferometry (BLI) kinetic assays of 83786-4-RR against Human SCPEP1 were performed. The affinity constant is below 1 pM.