

For Research Use Only

SCPEP1 Recombinant antibody, PBS Only

Catalog Number:83786-4-PBS



Basic Information

Catalog Number: 83786-4-PBS	GenBank Accession Number: BC072405	Purification Method: Protein A purification
Size: 100ug , Concentration: 1 mg/ml by Nanodrop;	GeneID (NCBI): 59342	CloneNo.: 240886B6
Source: Rabbit	UNIPROT ID: Q9HB40	
Isotype: IgG	Full Name: serine carboxypeptidase 1	
Immunogen Catalog Number: AG31381	Calculated MW: 452 aa, 51 kDa	
	Observed MW: 33 kDa, 45-51 kDa	

Applications

Tested Applications:
WB, IHC, ELISA

Species Specificity:
human

Background Information

SCPEP1 encodes retinoid-inducible serine carboxypeptidase (PMID:12975309). SCPEP1 and Cathepsin A play roles in regulation of vasoconstriction via inactivation of endothelin-1 (PubMed:24586188). The protein is widely expressed during mouse embryogenesis by immunohistochemical (PubMed:16461364). Scpep1 is proteolytically cleaved to a mature enzyme which is smaller than 51 kDa (PMID:16461364).

Storage

Storage:
Store at -80°C.

Storage Buffer:
PBS Only

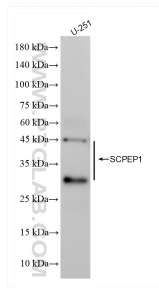
For technical support and original validation data for this product please contact:

T: 1 (888) 4PTGLAB (1-888-478-4522) (toll free in USA), or 1(312) 455-8498 (outside USA)

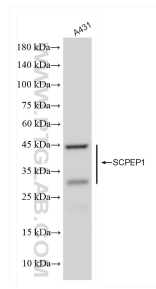
E: proteintech@ptglab.com
W: ptglab.com

This product is exclusively available under Proteintech Group brand and is not available to purchase from any other manufacturer.

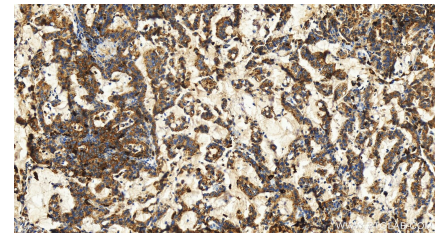
Selected Validation Data



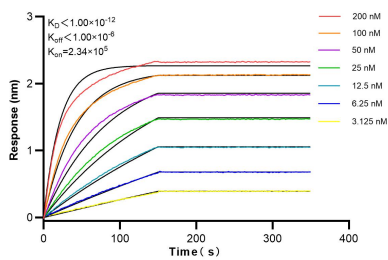
U-251 cells were subjected to SDS PAGE followed by western blot with 83786-4-RR (SCPEP1 antibody) at dilution of 1:8000 incubated at room temperature for 1.5 hours. This data was developed using the same antibody clone with 83786-4-PBS in a different storage buffer formulation.



A431 cells were subjected to SDS PAGE followed by western blot with 83786-4-RR (SCPEP1 antibody) at dilution of 1:8000 incubated at room temperature for 1.5 hours. This data was developed using the same antibody clone with 83786-4-PBS in a different storage buffer formulation.



Immunohistochemical analysis of paraffin-embedded human stomach cancer tissue slide using 83786-4-RR (SCPEP1 antibody) at dilution of 1:600 (under 20x lens). Heat mediated antigen retrieval with Tris-EDTA buffer(pH9). This data was developed using the same antibody clone with 83786-4-PBS in a different storage buffer formulation.



Biolayer interferometry (BLI) kinetic assays of 83786-4-RR against Human SCPEP1 were performed. The affinity constant is below 1 pM.