

For Research Use Only

ISLR Recombinant antibody, PBS Only

Catalog Number:83782-5-PBS



Basic Information

Catalog Number:

83782-5-PBS

Size:

100ug, Concentration: 1 mg/ml by Nanodrop;

Source:

Rabbit

Isotype:

IgG

Immunogen Catalog Number:

AG19446

GenBank Accession Number:

BC022478

GeneID (NCBI):

3671

UNIPROT ID:

O14498

Full Name:

immunoglobulin superfamily containing leucine-rich repeat

Calculated MW:

428 aa, 46 kDa

Observed MW:

44-46 kDa

Purification Method:

Protein A purification

CloneNo.:

240727D4

Applications

Tested Applications:

WB, IHC, ELISA

Species Specificity:

human, mouse

Background Information

The Immunoglobulin superfamily containing leucine-rich repeat protein (ISLR), is involved in various biological events, such as embryonic development, Gaucher's disease, and replicative senescence of fibroblasts in some organs, including the heart, pancreas, and bone marrow. ISLR, also known as meflin, is a newly discovered marker of mesenchymal stem cells, which is involved in pathological fibrosis and the cancer microenvironment. (PMID: 34713300)

Storage

Storage:

Store at -80°C.

Storage Buffer:

PBS Only

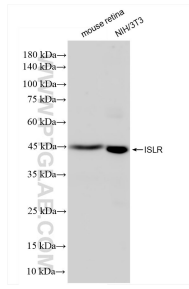
For technical support and original validation data for this product please contact:

T: 1 (888) 4PTGLAB (1-888-478-4522) (toll free in USA), or 1(312) 455-8498 (outside USA)

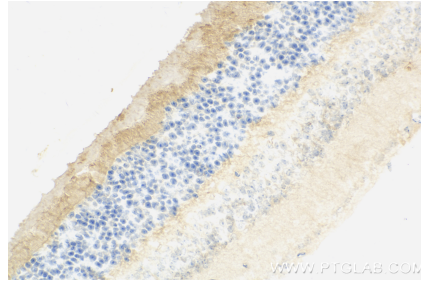
E: proteintech@ptglab.com
W: ptglab.com

This product is exclusively available under Proteintech Group brand and is not available to purchase from any other manufacturer.

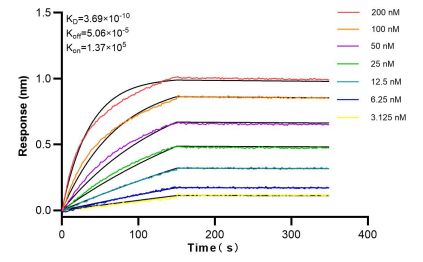
Selected Validation Data



Various lysates were subjected to SDS PAGE followed by western blot with 83782-5-RR (ISLR antibody) at dilution of 1:1000 incubated at room temperature for 1.5 hours. This data was developed using the same antibody clone with 83782-5-PBS in a different storage buffer formulation.



Immunohistochemical analysis of paraffin-embedded mouse eye tissue slide using 83782-5-RR (ISLR antibody) at dilution of 1:1000 (under 40x lens). Heat mediated antigen retrieval with Tris-EDTA buffer (pH 9.0). This data was developed using the same antibody clone with 83782-5-PBS in a different storage buffer formulation.



Bi-layer interferometry (BLI) kinetic assays of 83782-5-RR against Human ISLR were performed. The affinity constant is 0.369 nM.