

For Research Use Only

CALCA/CGRP Recombinant antibody, PBS Only (Capture)

Catalog Number: 83774-1-PBS



Basic Information

Catalog Number: 83774-1-PBS	GenBank Accession Number: NM_001741.3	Purification Method: Protein A purification
Size: 100ug, Concentration: 1 mg/ml by Nanodrop;	GeneID (NCBI): 796	CloneNo.: 240753G2
Source: Rabbit	UNIPROT ID: P01258-1	
Isotype: IgG	Full Name: calcitonin-related polypeptide alpha	
	Calculated MW: 15kDa	

Applications

Tested Applications:
IF/ICC, FC (Intra), Cytometric bead array, Indirect
ELISA

Species Specificity:
human

Product Information

83774-1-PBS targets CALCA/CGRP as part of a matched antibody pair:

MP00728-1: 83774-1-PBS capture and 83774-2-PBS detection (validated in Cytometric bead array)

Unconjugated rabbit recombinant monoclonal antibody in PBS only (BSA and azide free) storage buffer at a concentration of 1 mg/mL, ready for conjugation. Created using Proteintech's proprietary in-house recombinant technology. Recombinant production enables unrivalled batch-to-batch consistency, easy scale-up, and future security of supply.

This conjugation ready format makes antibodies ideal for use in many applications including: ELISAs, multiplex assays requiring matched pairs, mass cytometry, and multiplex imaging applications. Antibody use should be optimized by the end user for each application and assay.

Background Information

Calcitonin gene-related peptide (CGRP) is a 37-amino acid neuropeptide, which is primarily localized to C and A δ sensory fibers. These fibers display a wide innervation throughout the body, with extensive perivascular localization, and have a dual role in sensory (nociceptive) and efferent (effector) function. Discovered 30 years ago, it is produced as a consequence of alternative RNA processing of the calcitonin gene. CGRP has two major forms (α and β).

Storage

Storage:
Store at -80°C.
Storage Buffer:
PBS Only

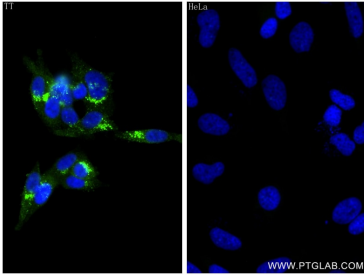
For technical support and original validation data for this product please contact:

T: 1 (888) 4PTGLAB (1-888-478-4522) (toll free
in USA), or 1(312) 455-8498 (outside USA)

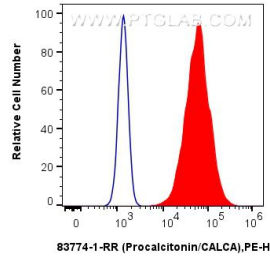
E: proteintech@ptglab.com
W: ptglab.com

This product is exclusively available under Proteintech Group brand and is not available to purchase from any other manufacturer.

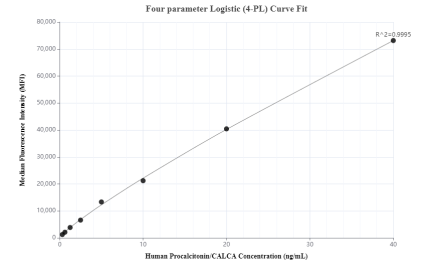
Selected Validation Data



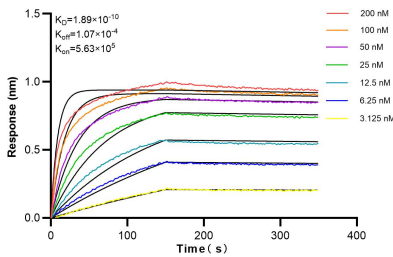
Immunofluorescent analysis of (4% PFA) fixed TT cells using Procalcitonin/CALCA antibody (83774-1-RR, Clone: 240753G2) at dilution of 1:400 and CoraLite®488-Conjugated AffiniPure Goat Anti-Rabbit IgG(H+L) (SA00013-2). (negative control: HeLa cells) This data was developed using the same antibody clone with 83774-1-PBS in a different storage buffer formulation.



1×10^6 TT cells were intracellularly stained with 0.25 μ g Procalcitonin/CALCA Recombinant Antibody (83774-1-RR, Clone:240753G2) and PE-Conjugated AffiniPure Goat Anti-Rabbit IgG(H+L) (red), or 0.25 μ g Isotype Control (blue). Cells were fixed with 4% PFA and permeabilized with Flow Cytometry Perm Buffer (PF00011-C). This data was developed using the same antibody clone with 83774-1-PBS in a different storage buffer formulation.



Cytometric bead array standard curve of MP00728-1, CALCA/CGRP Recombinant Matched Antibody Pair, PBS Only. Capture antibody: 83774-1-PBS. Detection antibody: 83774-2-PBS. Standard: Eg1060. Range: 0.313-40 ng/mL



Bi-layer interferometry (BLI) kinetic assays of 83774-1-RR against Human CALCA/CGRP were performed. The affinity constant is 0.189 nM.