

For Research Use Only

SETDB1 Recombinant antibody, PBS Only (Capture)

Catalog Number:83772-2-PBS



Basic Information

Catalog Number: 83772-2-PBS	GenBank Accession Number: BC009362	Purification Method: Protein A purification
Size: 100ug , Concentration: 1 mg/ml by Nanodrop;	GeneID (NCBI): 9869	CloneNo.: 240805F5
Source: Rabbit	UNIPROT ID: Q15047	
Isotype: IgG	Full Name: SET domain, bifurcated 1	
Immunogen Catalog Number: AG1725	Calculated MW: 143 kDa	

Applications

Tested Applications:
Cytometric bead array, Sandwich ELISA, Indirect ELISA, Sample test

Species Specificity:
human

Product Information

83772-2-PBS targets SETDB1 as part of a matched antibody pair:

MP00766-2: 83772-2-PBS capture and 83772-3-PBS detection (validated in Cytometric bead array)

MP00766-3: 83772-2-PBS capture and 83772-4-PBS detection (validated in Cytometric bead array)

MP00766-4: 83772-2-PBS capture and 83772-7-PBS detection (validated in Sandwich ELISA)

Unconjugated rabbit recombinant monoclonal antibody in PBS only (BSA and azide free) storage buffer at a concentration of 1 mg/mL, ready for conjugation. Created using Proteintech's proprietary in-house recombinant technology. Recombinant production enables unrivalled batch-to-batch consistency, easy scale-up, and future security of supply.

This conjugation ready format makes antibodies ideal for use in many applications including: ELISAs, multiplex assays requiring matched pairs, mass cytometry, and multiplex imaging applications. Antibody use should be optimized by the end user for each application and assay.

Storage

Storage:
Store at -80°C.
Storage Buffer:
PBS Only

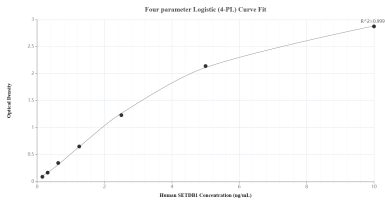
For technical support and original validation data for this product please contact:

T: 1 (888) 4PTGLAB (1-888-478-4522) (toll free in USA), or 1(312) 455-8498 (outside USA)

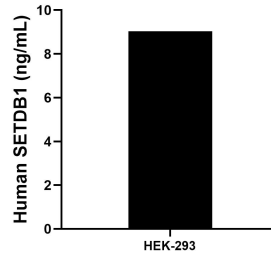
E: proteintech@ptglab.com
W: ptglab.com

This product is exclusively available under Proteintech Group brand and is not available to purchase from any other manufacturer.

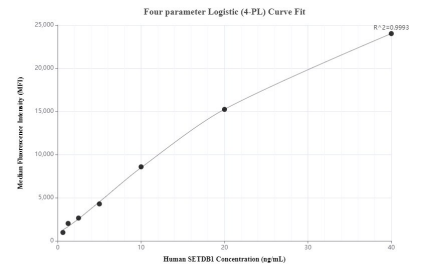
Selected Validation Data



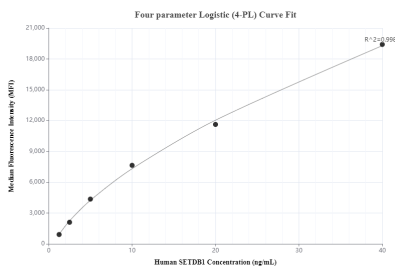
Sandwich ELISA standard curve of MP00766-4, Human SETDB1 Recombinant Matched Antibody Pair - PBS only. 83772-2-PBS was coated to a plate as the capture antibody and incubated with serial dilutions of standard Ag1725. 83772-7-PBS was HRP conjugated as the detection antibody. Range: 0.156-10 ng/mL



The mean SETDB1 concentration was determined to be 9.04 ng/mL in HEK-293 cell extract based on a 4.50 mg/mL extract load.



Cytometric bead array standard curve of MP00766-2, SETDB1 Recombinant Matched Antibody Pair, PBS Only. Capture antibody: 83772-2-PBS. Detection antibody: 83772-3-PBS. Standard: Ag1725. Range: 0.625-40 ng/mL



Cytometric bead array standard curve of MP00766-3, SETDB1 Recombinant Matched Antibody Pair, PBS Only. Capture antibody: 83772-2-PBS. Detection antibody: 83772-4-PBS. Standard: Ag1725. Range: 1.25-40 ng/mL