

For Research Use Only

APOL1 Recombinant antibody, PBS Only (Capture/Detector)

Catalog Number:83770-1-PBS



Basic Information

| | | |
|--|--|---|
| Catalog Number: 83770-1-PBS | GenBank Accession Number: BC017331 | Purification Method: Protein A purification |
| Size: 100ug , Concentration: 1 mg/ml by Nanodrop; | GeneID (NCBI): 8542 | CloneNo.: 240814A3 |
| Source: Rabbit | UNIPROT ID: O14791 | |
| Isotype: IgG | Full Name: apolipoprotein L, 1 | |
| Immunogen Catalog Number: AG2016 | Calculated MW: 44 kDa | |

Applications

Tested Applications:
Cytometric bead array, Sandwich ELISA, Indirect ELISA,
Sample test

Species Specificity:
human

Product Information

83770-1-PBS targets APOL1 as part of a matched antibody pair:

MP00760-1: 83770-1-PBS capture and 83770-4-PBS detection (validated in Cytometric bead array)

MP00760-2: 83770-2-PBS capture and 83770-1-PBS detection (validated in Cytometric bead array, Sandwich ELISA)

Unconjugated rabbit recombinant monoclonal antibody in PBS only (BSA and azide free) storage buffer at a concentration of 1 mg/mL, ready for conjugation. Created using Proteintech's proprietary in-house recombinant technology. Recombinant production enables unrivalled batch-to-batch consistency, easy scale-up, and future security of supply.

This conjugation ready format makes antibodies ideal for use in many applications including: ELISAs, multiplex assays requiring matched pairs, mass cytometry, and multiplex imaging applications. Antibody use should be optimized by the end user for each application and assay.

Storage

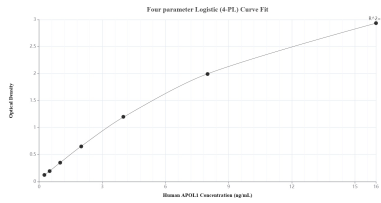
Storage:
Store at -80°C.

Storage Buffer:
PBS Only

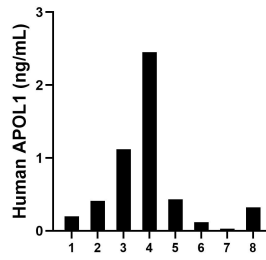
For technical support and original validation data for this product please contact:
T: 1 (888) 4PTGLAB (1-888-478-4522) (toll free in USA), or 1(312) 455-8498 (outside USA) E: proteintech@ptglab.com
W: ptglab.com

This product is exclusively available under Proteintech Group brand and is not available to purchase from any other manufacturer.

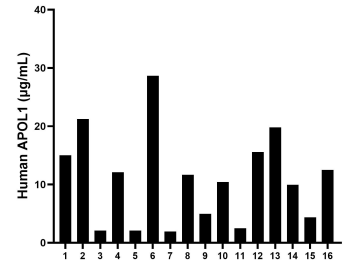
Selected Validation Data



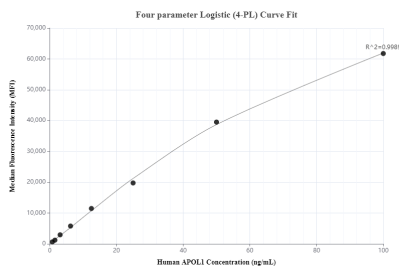
Sandwich ELISA standard curve of MP00760-2, Human APOL1 Recombinant Matched Antibody Pair - PBS only. 83770-2-PBS was coated to a plate as the capture antibody and incubated with serial dilutions of standard Ag2016. 83770-1-PBS was HRP conjugated as the detection antibody. Range: 0.25-16 ng/mL



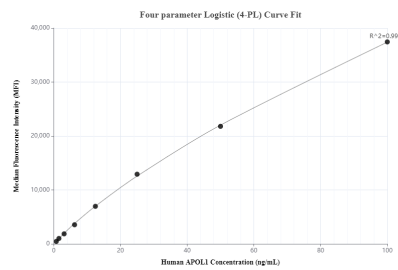
Urine of eight individual healthy human donors was measured. The APOL1 concentration of detected samples was determined to be 0.64 ng/mL with a range of 0.03 - 2.45 ng/mL



Serum of sixteen individual healthy human donors was measured. The APOL1 concentration of detected samples was determined to be 10.92 µg/mL with a range of 1.95 - 28.64 µg/mL



Cytometric bead array standard curve of MP00760-1, APOL1 Recombinant Matched Antibody Pair, PBS Only. Capture antibody: 83770-1-PBS. Detection antibody: 83770-4-PBS. Standard: Ag2016. Range: 0.78-100 ng/mL



Cytometric bead array standard curve of MP00760-2, APOL1 Recombinant Matched Antibody Pair, PBS Only. Capture antibody: 83770-2-PBS. Detection antibody: 83770-1-PBS. Standard: Ag2016. Range: 0.78-100 ng/mL