

For Research Use Only

GBP1 Recombinant antibody, PBS Only (Capture)

Catalog Number: 83751-2-PBS



Basic Information

Catalog Number: 83751-2-PBS	GenBank Accession Number: BC002666	Purification Method: Protein A purification
Size: 100ug, Concentration: 1 mg/ml by Nanodrop;	GeneID (NCBI): 2633	CloneNo.: 240634G7
Source: Rabbit	UNIPROT ID: P32455	
Isotype: IgG	Full Name: GTP binding protein 1	
Immunogen Catalog Number: AG7562	Calculated MW: 68 kDa	

Applications

Tested Applications:
Cytometric bead array, Sandwich ELISA, Indirect ELISA, Sample test

Species Specificity:
human

Product Information

83751-2-PBS targets GBP1 as part of a matched antibody pair:

MP00707-1: 83751-2-PBS capture and 83751-1-PBS detection (validated in Cytometric bead array)

MP00707-4: 83751-2-PBS capture and 83751-4-PBS detection (validated in Sandwich ELISA)

Unconjugated rabbit recombinant monoclonal antibody in PBS only (BSA and azide free) storage buffer at a concentration of 1 mg/mL, ready for conjugation. Created using Proteintech's proprietary in-house recombinant technology. Recombinant production enables unrivalled batch-to-batch consistency, easy scale-up, and future security of supply.

This conjugation ready format makes antibodies ideal for use in many applications including: ELISAs, multiplex assays requiring matched pairs, mass cytometry, and multiplex imaging applications. Antibody use should be optimized by the end user for each application and assay.

Storage

Storage:
Store at -80°C.

Storage Buffer:
PBS Only

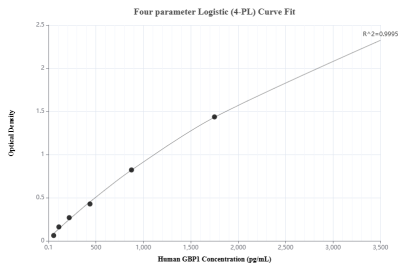
For technical support and original validation data for this product please contact:

T: 1 (888) 4PTGLAB (1-888-478-4522) (toll free in USA), or 1(312) 455-8498 (outside USA)

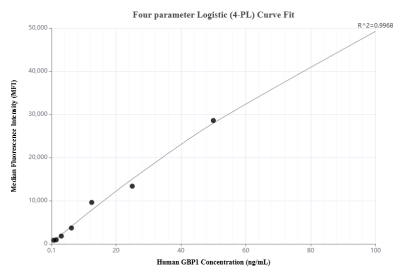
E: proteintech@ptglab.com
W: ptglab.com

This product is exclusively available under Proteintech Group brand and is not available to purchase from any other manufacturer.

Selected Validation Data

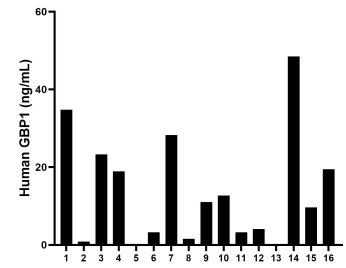


Sandwich ELISA standard curve of MP00707-4, Human GBP1 Recombinant Matched Antibody Pair - PBS only. 83751-2-PBS was coated to a plate as the capture antibody and incubated with serial dilutions of standard Ag7562. 83751-4-PBS was HRP conjugated as the detection antibody. Range: 54.68-3500 pg/mL



Cytometric bead array standard curve of MP00707-1, GBP1 Recombinant Matched Antibody Pair, PBS Only. Capture antibody: 83751-2-PBS. Detection antibody: 83751-1-PBS. Standard: Ag7562. Range: 0.78-100 ng/mL

SK-OV-3 cells were cultured in DMEM supplemented with 10% fetal bovine serum, 2.5 mM L-glutamine, 100 U/mL penicilin, and 100 µg/mL streptomycin sulfate. Cells were stimulated with 1000 U/mL recombinant human IFN-γ for 48h. An aliquot of the cell culture supernatants was removed, assayed for human GBP1.



Serum of eight individual healthy human donors was measured. The human GBP1 concentration of detected samples was determined to be 14.66 ng/mL with a range of 0.29 - 48.49 ng/mL