

For Research Use Only

# CKMT1A Recombinant antibody

Catalog Number:83750-4-RR



## Basic Information

<b>Catalog Number:</b> 83750-4-RR	<b>GenBank Accession Number:</b> BC001926	<b>Purification Method:</b> Protein A purification
<b>Size:</b> 100ul , Concentration: 1000 ug/ml by Nanodrop;	<b>GeneID (NCBI):</b> 548596	<b>CloneNo.:</b> 240825A4
<b>Source:</b> Rabbit	<b>UNIPROT ID:</b> P12532	<b>Recommended Dilutions:</b> WB 1:2000-1:10000
<b>Isotype:</b> IgG	<b>Full Name:</b> creatine kinase, mitochondrial 1A	
<b>Immunogen Catalog Number:</b> AG7583	<b>Calculated MW:</b> 47 kDa	
	<b>Observed MW:</b> 45 kDa	

## Applications

**Tested Applications:**  
WB, ELISA

**Species Specificity:**  
human, mouse, rat

**Positive Controls:**

WB : HEK-293T cells, HepG2 cells, SH-SY5Y cells, mouse heart tissue, rat heart tissue

## Background Information

CKMT1A(Creatine kinase U-type, mitochondrial) is also named CKMT and belongs to the ATP:guanido phosphotransferase family. CKMT1A is a nearly identical copy of the CKMT1B gene. Both genes encode an identical CKMT1 protein(PMID:17098888). It reversibly catalyzes the transfer of phosphate between ATP and various phosphates. It has 2 isoforms produced by alternative splicing with the molecular weight of 47 kDa and 50 kDa.

## Storage

**Storage:**

Store at -20°C. Stable for one year after shipment.

**Storage Buffer:**

PBS with 0.02% sodium azide and 50% glycerol pH 7.3.

Aliquoting is unnecessary for -20°C storage

\*\*\* 20ul sizes contain 0.1% BSA

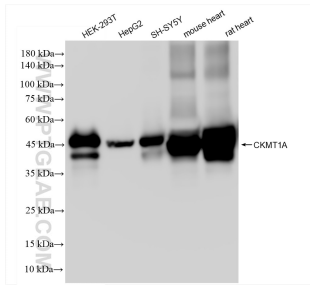
For technical support and original validation data for this product please contact:

T: 1 (888) 4PTGLAB (1-888-478-4522) (toll free in USA), or 1(312) 455-8498 (outside USA)

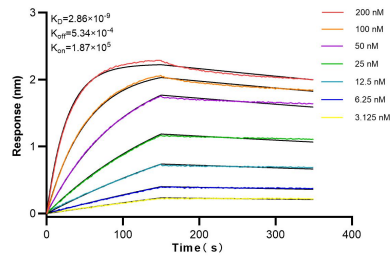
E: proteintech@ptglab.com  
W: ptglab.com

This product is exclusively available under Proteintech Group brand and is not available to purchase from any other manufacturer.

## Selected Validation Data



Various lysates were subjected to SDS PAGE followed by western blot with 83750-4-RR (CKMT1A antibody) at dilution of 1:5000 incubated at room temperature for 1.5 hours.



Biolayer interferometry (BLI) kinetic assays of 83750-4-RR against Human CKMT1A were performed. The affinity constant is 2.86 nM.