

For Research Use Only

# IL-6 Recombinant antibody

Catalog Number: 83747-7-RR



## Basic Information

<b>Catalog Number:</b> 83747-7-RR	<b>GenBank Accession Number:</b> BC015511	<b>Purification Method:</b> Protein A purification
<b>Size:</b> 100ul , Concentration: 1000 µg/ml by Nanodrop;	<b>GeneID (NCBI):</b> 3569	<b>CloneNo.:</b> 240670B3
<b>Source:</b> Rabbit	<b>ENSEMBL Gene ID:</b> ENSG00000136244	<b>Recommended Dilutions:</b> WB 1:2000-1:10000
<b>Isotype:</b> IgG	<b>UNIPROT ID:</b> P05231	
	<b>Full Name:</b> interleukin 6 (interferon, beta 2)	
	<b>Calculated MW:</b> 212 aa, 24 kDa	
	<b>Observed MW:</b> 20 kDa	

## Applications

<b>Tested Applications:</b> WB, ELISA	<b>Positive Controls:</b> WB : LPS and Brefeldin A treated HUVEC cells,
<b>Species Specificity:</b> human	

## Background Information

Interleukin-6 (IL-6) is an interleukin that acts as both a pro-inflammatory and anti-inflammatory cytokine. IL-6 protein is secreted by a variety of cell types including T cells and macrophages as phosphorylated and variably glycosylated molecule. IL-6 plays an essential role in the final differentiation of B-cells into Ig-secreting cells involved in lymphocyte and monocyte differentiation. It induces myeloma and plasmacytoma growth and induces nerve cells differentiation acts on B-cells, T-cells, hepatocytes, hematopoietic progenitor cells and cells of the CNS. IL-6 is also considered a myokine, a cytokine produced from muscle, and is elevated in response to muscle contraction. IL-6 has been shown to interact with interleukin-6 receptor and glycoprotein 130. Additionally, IL-6 is involved in hematopoiesis, bone metabolism, and cancer progression, and has been defined an essential role in directing transition from innate to acquired immunity.

## Storage

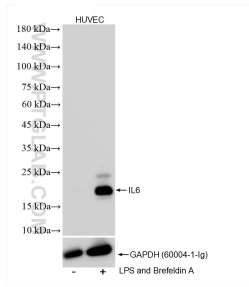
**Storage:**  
Store at -20°C. Stable for one year after shipment.  
**Storage Buffer:**  
PBS with 0.02% sodium azide and 50% glycerol pH 7.3.  
Aliquoting is unnecessary for -20°C storage

\*\*\* 20ul sizes contain 0.1% BSA

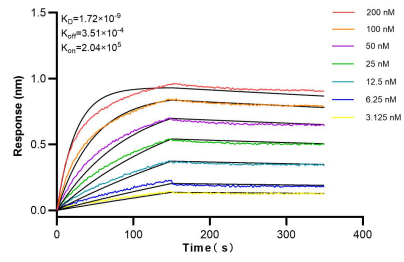
For technical support and original validation data for this product please contact:  
T: 1 (888) 4PTGLAB (1-888-478-4522) (toll free in USA), or 1(312) 455-8498 (outside USA)      E: proteintech@ptglab.com  
W: ptglab.com

This product is exclusively available under Proteintech Group brand and is not available to purchase from any other manufacturer.

## Selected Validation Data



LPS and Brefeldin A treated HUVEC cells were subjected to SDS PAGE followed by western blot with 83747-7-RR (IL-6 antibody) at dilution of 1:5000 incubated at room temperature for 1.5 hours.



Biolayer interferometry (BLI) kinetic assays of 83747-7-RR against Human IL-6 were performed. The affinity constant is 1.72 nM.