

For Research Use Only

Cathepsin D Recombinant antibody, PBS Only (Capture)

Catalog Number: 83743-6-PBS



Basic Information

Catalog Number: 83743-6-PBS	GenBank Accession Number: NM_001909.5	Purification Method: Protein A purification
Size: 100ug, Concentration: 1 mg/ml by Nanodrop;	GeneID (NCBI): 1509	CloneNo.: 240775A3
Source: Rabbit	UNIPROT ID: P07339	
Isotype: IgG	Full Name: cathepsin D	
	Calculated MW: 45kDa	

Applications

Tested Applications:
Sandwich ELISA, Indirect ELISA, Sample test

Species Specificity:
human

Product Information

83743-6-PBS targets Cathepsin D as part of a matched antibody pair:

MP00695-4: 83743-6-PBS capture and 83743-2-PBS detection (validated in Sandwich ELISA)

Unconjugated rabbit recombinant monoclonal antibody in PBS only (BSA and azide free) storage buffer at a concentration of 1 mg/mL, ready for conjugation. Created using Proteintech's proprietary in-house recombinant technology. Recombinant production enables unrivalled batch-to-batch consistency, easy scale-up, and future security of supply.

This conjugation ready format makes antibodies ideal for use in many applications including: ELISAs, multiplex assays requiring matched pairs, mass cytometry, and multiplex imaging applications. Antibody use should be optimized by the end user for each application and assay.

Storage

Storage:
Store at -80°C.
Storage Buffer:
PBS Only

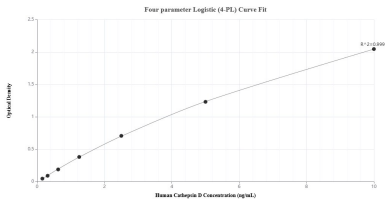
For technical support and original validation data for this product please contact:

T: 1 (888) 4PTGLAB (1-888-478-4522) (toll free in USA), or 1(312) 455-8498 (outside USA)

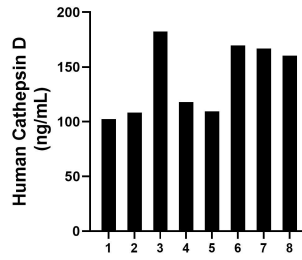
E: proteintech@ptglab.com
W: ptglab.com

This product is exclusively available under Proteintech Group brand and is not available to purchase from any other manufacturer.

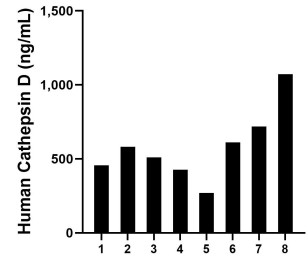
Selected Validation Data



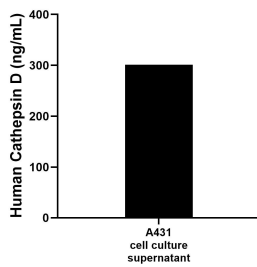
Sandwich ELISA standard curve of MP00695-4, Human Cathepsin D Recombinant Matched Antibody Pair - PBS only. 83743-6-PBS was coated to a plate as the capture antibody and incubated with serial dilutions of standard Eg1053. 83743-2-PBS was HRP conjugated as the detection antibody. Range: 0.156-10 ng/mL



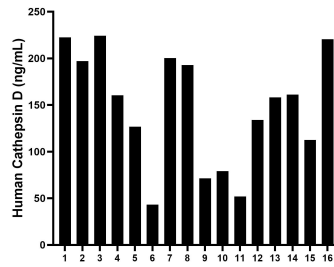
Saliva of eight individual healthy human donors was measured. The human Cathepsin D concentration of detected samples was determined to be 139.6 ng/mL with a range of 102.4 - 182.3 ng/mL



Human milk of eight individual healthy human donors was measured. The human Cathepsin D concentration of detected samples was determined to be 580.4 ng/mL with a range of 270 - 1,071.8 ng/mL



For the A431 supernatant, the mean human Cathepsin D concentration was determined to be 301.05 ng/mL



Serum of sixteen individual healthy human donors was measured. The human Cathepsin D concentration of detected samples was determined to be 147.3 ng/mL with a range of 43.2 - 224.2 ng/mL