

For Research Use Only

Cathepsin D Recombinant antibody, PBS Only

Catalog Number: 83743-5-PBS



Basic Information

Catalog Number: 83743-5-PBS	GenBank Accession Number: NM_001909.5	Purification Method: Protein A purification
Size: 100ug, Concentration: 1 mg/ml by Nanodrop;	GeneID (NCBI): 1509	CloneNo.: 240775G2
Source: Rabbit	UNIPROT ID: P07339	
Isotype: IgG	Full Name: cathepsin D	
	Calculated MW: 45kDa	
	Observed MW: 32 kDa, 48 kDa, 52 kDa	

Applications

Tested Applications:
WB, IF/ICC, ELISA

Species Specificity:
human

Background Information

CTSD (Cathepsin D) also named CPSD, belongs to the peptidase A1 family. It is ubiquitously expressed and is involved in proteolytic degradation, cell invasion, and apoptosis. Human CTSD is synthesized as a 52-kDa precursor that is converted into an active 48-kDa single-chain intermediate in the endosomes, and then into a fully active mature form, composed of a 34-kDa heavy chain and a 14-kDa light chain, in the lysosomes. It is a lysosomal acid protease found in neutrophils and monocytes and involved in the pathogenesis of several diseases such as breast cancer and possibly Alzheimer disease (PMID: 27114232, PMID: 30717773, PMID: 30051532).

Storage

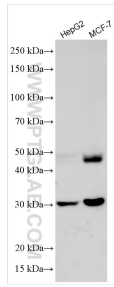
Storage:
Store at -80°C.

Storage Buffer:
PBS Only

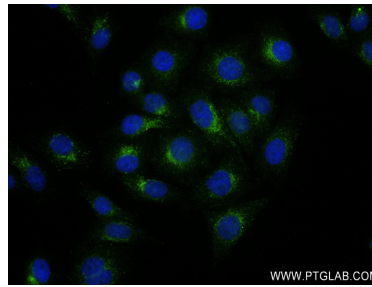
For technical support and original validation data for this product please contact:
T: 1 (888) 4PTGLAB (1-888-478-4522) (toll free in USA), or 1(312) 455-8498 (outside USA) E: proteintech@ptglab.com
W: ptglab.com

This product is exclusively available under Proteintech Group brand and is not available to purchase from any other manufacturer.

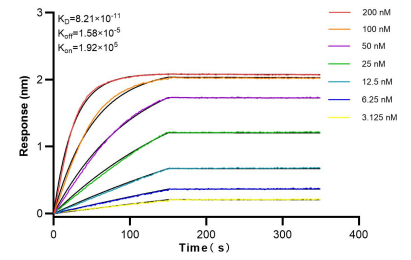
Selected Validation Data



Various lysates were subjected to SDS PAGE followed by western blot with 83743-5-RR (Cathepsin D antibody) at dilution of 1:6000 incubated at room temperature for 1.5 hours. This data was developed using the same antibody clone with 83743-5-PBS in a different storage buffer formulation.



Immunofluorescent analysis of (4% PFA) fixed HepG2 cells using Cathepsin D antibody (83743-5-RR, Clone: 240775G2) at dilution of 1:250 and CoraLite® 488-Conjugated AffiniPure Goat Anti-Rabbit IgG(H+L) (SA00013-2). This data was developed using the same antibody clone with 83743-5-PBS in a different storage buffer formulation.



Bioluminescence resonance energy transfer (BRET) kinetic assays of 83743-5-RR against Human Cathepsin D were performed. The affinity constant is 0.821 nM.