

For Research Use Only

Apoe Recombinant antibody

Catalog Number:83728-4-RR



Basic Information

Catalog Number: 83728-4-RR	GenBank Accession Number: NM_001305819.1	Purification Method: Protein A purification
Size: 100ul , Concentration: 1000 ug/ml by Nanodrop;	GeneID (NCBI): 11816	CloneNo.: 240786C3
Source: Rabbit	UNIPROT ID: P08226	Recommended Dilutions: WB 1:5000-1:50000 IHC 1:300-1:1200 IF/ICC 1:125-1:500
Isotype: IgG	Full Name: Apolipoprotein E	
	Calculated MW: 36kDa	
	Observed MW: 36 kDa	

Applications

Tested Applications:
WB, IHC, IF/ICC, ELISA

Species Specificity:
mouse, rat

**Note-IHC: suggested antigen retrieval with
TE buffer pH 9.0; (*) Alternatively, antigen
retrieval may be performed with citrate
buffer pH 6.0**

Positive Controls:

WB : mouse liver tissue, mouse serum, mouse brain
tissue

IHC : mouse brain tissue, mouse liver tissue, rat
cerebellum tissue

IF/ICC : HepG2 cells,

Background Information

Apolipoprotein E (ApoE) is a core component of plasma lipoproteins that participates in diverse biological processes, including plasma lipoprotein metabolism, intracellular cholesterol utilization, cell growth, immunoregulation, and neuronal growth and repair (PMID: 17854398). Mouse apoE, like apoE4, contains the equivalent of Arg-112 and Glu-255, but lacks the critical Arg-61 equivalent (it contains Thr-61). Thus, mouse apoE does not display apoE4 domain interaction (PMID: 11553788).

Storage

Storage:

Store at -20°C. Stable for one year after shipment.

Storage Buffer:

PBS with 0.02% sodium azide and 50% glycerol pH 7.3.

Aliquoting is unnecessary for -20°C storage

*** 20ul sizes contain 0.1% BSA

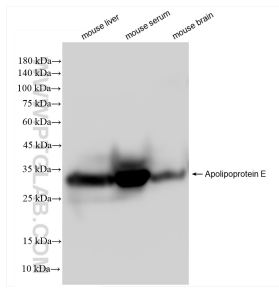
For technical support and original validation data for this product please contact:

T: 1 (888) 4PTGLAB (1-888-478-4522) (toll free
in USA), or 1(312) 455-8498 (outside USA)

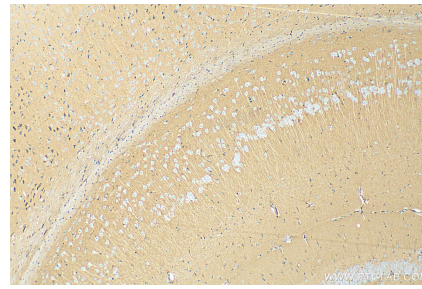
E: proteintech@ptglab.com
W: ptglab.com

This product is exclusively available under Proteintech Group brand and is not available to purchase from any other manufacturer.

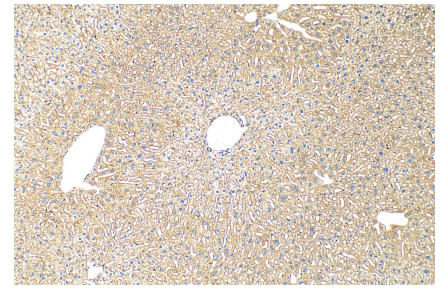
Selected Validation Data



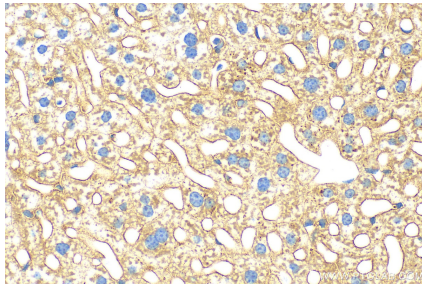
Various lysates were subjected to SDS PAGE followed by western blot with 83728-4-RR (ApoE antibody) at dilution of 1:10000 incubated at room temperature for 1.5 hours.



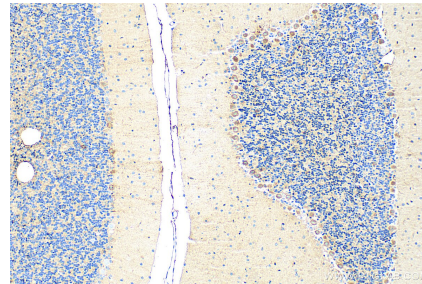
Immunohistochemical analysis of paraffin-embedded mouse brain tissue slide using 83728-4-RR (Apolipoprotein E antibody) at dilution of 1:600 (under 10x lens). Heat mediated antigen retrieval with Tris-EDTA buffer (pH 9.0).



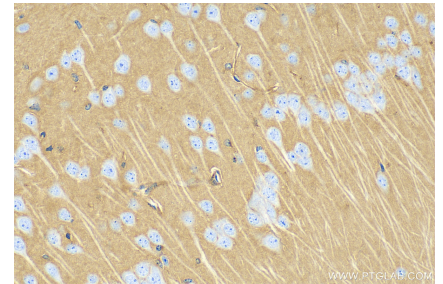
Immunohistochemical analysis of paraffin-embedded mouse liver tissue slide using 83728-4-RR (Apolipoprotein E antibody) at dilution of 1:600 (under 10x lens). Heat mediated antigen retrieval with Tris-EDTA buffer (pH 9.0).



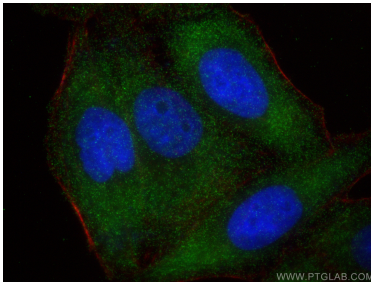
Immunohistochemical analysis of paraffin-embedded mouse liver tissue slide using 83728-4-RR (Apolipoprotein E antibody) at dilution of 1:600 (under 40x lens). Heat mediated antigen retrieval with Tris-EDTA buffer (pH 9.0).



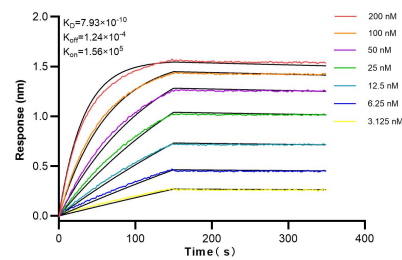
Immunohistochemical analysis of paraffin-embedded rat cerebellum tissue slide using 83728-4-RR (Apolipoprotein E antibody) at dilution of 1:600 (under 10x lens). Heat mediated antigen retrieval with Tris-EDTA buffer (pH 9.0).



Immunohistochemical analysis of paraffin-embedded mouse brain tissue slide using 83728-4-RR (Apolipoprotein E antibody) at dilution of 1:600 (under 40x lens). Heat mediated antigen retrieval with Tris-EDTA buffer (pH 9.0).



Immunofluorescent analysis of (-20°C Ethanol) fixed HepG2 cells using Apoe antibody (83728-4-RR, Clone: 240786C3) at dilution of 1:250 and Multi-rAb CoraLite ® Plus 488-Goat Anti-Rabbit Recombinant Secondary Antibody (H+L) (RGAR002), CL594-Phalloidin (red).



Biolayer interferometry (BLI) kinetic assays of 83728-4-RR against Mouse Apolipoprotein E were performed. The affinity constant is 0.793 nM.