

For Research Use Only

VEGF-C Recombinant antibody, PBS Only (Capture/Detector)

Catalog Number:83727-3-PBS



Basic Information

Catalog Number: 83727-3-PBS	GenBank Accession Number: BC035212	Purification Method: Protein A purification
Size: 100ug , Concentration: 1 mg/ml by Nanodrop;	GeneID (NCBI): 7424	CloneNo.: 240772C1
Source: Rabbit	UNIPROT ID: P49767	
Isotype: IgG	Full Name: vascular endothelial growth factor C	
	Calculated MW: 419 aa, 47 kDa	

Applications

Tested Applications:
Cytometric bead array, Sandwich ELISA, Indirect ELISA, Sample test

Species Specificity:
human

Product Information

83727-3-PBS targets VEGF-C as part of a matched antibody pair:

MP00710-1: 83727-2-PBS capture and 83727-3-PBS detection (validated in Cytometric bead array)

MP00710-2: 83727-3-PBS capture and 83727-1-PBS detection (validated in Cytometric bead array)

MP00710-3: 83727-3-PBS capture and 83727-4-PBS detection (validated in Cytometric bead array, Sandwich ELISA)

Unconjugated rabbit recombinant monoclonal antibody in PBS only (BSA and azide free) storage buffer at a concentration of 1 mg/mL, ready for conjugation. Created using Proteintech's proprietary in-house recombinant technology. Recombinant production enables unrivalled batch-to-batch consistency, easy scale-up, and future security of supply.

This conjugation ready format makes antibodies ideal for use in many applications including: ELISAs, multiplex assays requiring matched pairs, mass cytometry, and multiplex imaging applications. Antibody use should be optimized by the end user for each application and assay.

Storage

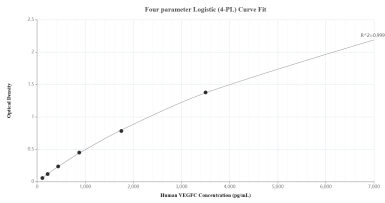
Storage:
Store at -80°C.

Storage Buffer:
PBS Only

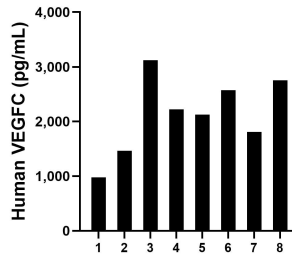
For technical support and original validation data for this product please contact:
T: 1 (888) 4PTGLAB (1-888-478-4522) (toll free in USA), or 1(312) 455-8498 (outside USA) E: proteintech@ptglab.com
W: ptglab.com

This product is exclusively available under Proteintech Group brand and is not available to purchase from any other manufacturer.

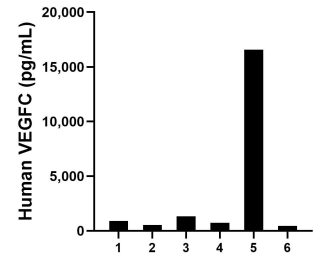
Selected Validation Data



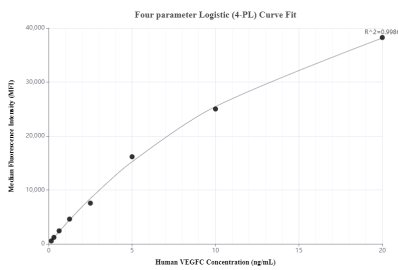
Sandwich ELISA standard curve of MP00710-3, Human VEGFC Recombinant Matched Antibody Pair - PBS only. 83727-3-PBS was coated to a plate as the capture antibody and incubated with serial dilutions of standard Eg32025. 83727-4-PBS was HRP conjugated as the detection antibody. Range: 109.4-7000 pg/mL



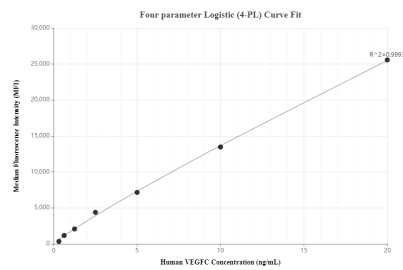
Saliva of eight individual healthy human donors was measured. The VEGFC concentration of detected samples was determined to be 2,130.9 pg/mL with a range of 977.3 - 3,119.4 pg/mL



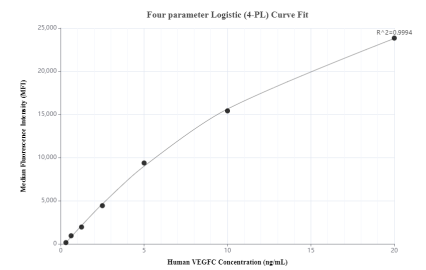
Serum of six individual healthy human donors was measured. The VEGFC concentration of detected samples was determined to be 3,419.6 pg/mL with a range of 440.5 - 16,575.6 pg/mL



Cytometric bead array standard curve of MP00710-1, VEGF-C Recombinant Matched Antibody Pair, PBS Only. Capture antibody: 83727-2-PBS. Detection antibody: 83727-3-PBS. Standard: Eg32025. Range: 0.156-20 ng/mL



Cytometric bead array standard curve of MP00710-2, VEGF-C Recombinant Matched Antibody Pair, PBS Only. Capture antibody: 83727-1-PBS. Detection antibody: 83727-3-PBS. Standard: Eg32025. Range: 0.313-20 ng/mL



Cytometric bead array standard curve of MP00710-3, VEGF-C Recombinant Matched Antibody Pair, PBS Only. Capture antibody: 83727-3-PBS. Detection antibody: 83727-4-PBS. Standard: Eg32025. Range: 0.313-20 ng/mL