

For Research Use Only

Mouse CD155/PVR Recombinant antibody, PBS Only

Catalog Number: 83724-6-PBS



Basic Information

Catalog Number:

83724-6-PBS

Size:

100ug, Concentration: 1 mg/ml by Nanodrop;

Source:

Rabbit

Isotype:

IgG

GenBank Accession Number:

NM_027514.2

GeneID (NCBI):

52118

UNIPROT ID:

Q8K094

Full Name:

poliovirus receptor

Calculated MW:

45 kDa

Observed MW:

80 kDa

Purification Method:

Protein A purification

CloneNo.:

240731B1

Applications

Tested Applications:

WB, IF/ICC, ELISA

Species Specificity:

mouse

Background Information

CD155, also known as the poliovirus receptor (PVR) or Necl-5, is one of the nectin-like family members, belonging to the Ca²⁺ independent immunoglobulin superfamily (IgSF) in cell adhesion molecules (PMID: 37660884). CD155 is a type I transmembrane protein composed of three extracellular immunoglobulin-like domains, a transmembrane domain, and a cytoplasmic tail. It is involved in cell-to-cell and cell-to-ECM adhesion (PMID: 32019260; 11437656). CD155 acts as a ligand for immune receptors, including TIGIT, CD96 and CD226, which are expressed on T cells and NK cells. CD155 interacts with these receptors to modulate immune responses, such as T cell activation and NK cell-mediated cytotoxicity (PMID: 37660884). CD155 serves as the entry receptor for poliovirus and thereby mediates susceptibility to poliovirus infection (PMID: 15034010).

Storage

Storage:

Store at -80°C.

Storage Buffer:

PBS Only

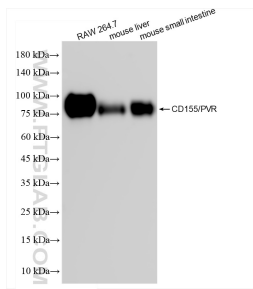
For technical support and original validation data for this product please contact:

T: 1 (888) 4PTGLAB (1-888-478-4522) (toll free in USA), or 1(312) 455-8498 (outside USA)

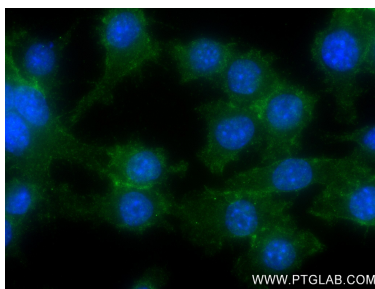
E: proteintech@ptglab.com
W: ptglab.com

This product is exclusively available under Proteintech Group brand and is not available to purchase from any other manufacturer.

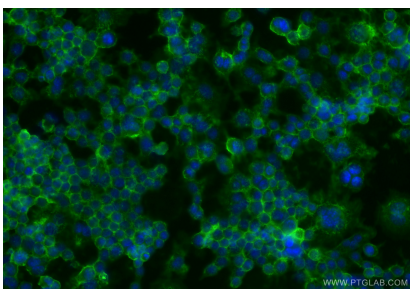
Selected Validation Data



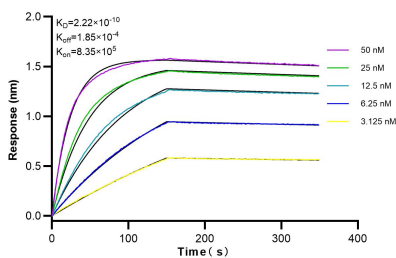
Various lysates were subjected to SDS PAGE followed by western blot with 83724-6-RR (CD155/PVR antibody) at dilution of 1:1000 incubated at room temperature for 1.5 hours. This data was developed using the same antibody clone with 83724-6-PBS in a different storage buffer formulation.



Immunofluorescent analysis of (4% PFA) fixed RAW 264.7 cells using CD155/PVR antibody (83724-6-RR, Clone: 240731B1) at dilution of 1:250 and CoraLite®488-Conjugated AffiniPure Goat Anti-Rabbit IgG(H+L) (SA00013-2). This data was developed using the same antibody clone with 83724-6-PBS in a different storage buffer formulation.



Immunofluorescent analysis of (-20°C Ethanol) fixed RAW 264.7 cells using CD155/PVR antibody (83724-6-RR, Clone: 240731B1) at dilution of 1:1000 and CoraLite®488-Conjugated Goat Anti-Rabbit IgG(H+L) (SA00013-2). This data was developed using the same antibody clone with 83724-6-PBS in a different storage buffer formulation.



Biolayer interferometry (BLI) kinetic assays of 83724-6-RR against Mouse CD155/PVR were performed. The affinity constant is 0.222 nM.