

For Research Use Only

# Mouse E-selectin Recombinant antibody, PBS Only (Capture)

Catalog Number:83720-4-PBS



## Basic Information

<b>Catalog Number:</b> 83720-4-PBS	<b>GenBank Accession Number:</b> NM_011345.2	<b>Purification Method:</b> Protein A purification
<b>Size:</b> 100ug , Concentration: 1 mg/ml by Nanodrop;	<b>GeneID (NCBI):</b> 20339	<b>CloneNo.:</b> 240700G8
<b>Source:</b> Rabbit	<b>UNIPROT ID:</b> Q00690	
<b>Isotype:</b> IgG	<b>Full Name:</b> selectin, endothelial cell	
	<b>Calculated MW:</b> 67KD	

## Applications

**Tested Applications:**  
Cytometric bead array, Sandwich ELISA, Indirect ELISA, Sample test

**Species Specificity:**  
mouse

## Product Information

83720-4-PBS targets E-selectin as part of a matched antibody pair:

MP00720-1: 83720-4-PBS capture and 83720-3-PBS detection (validated in Cytometric bead array)

MP00720-2: 83720-4-PBS capture and 83720-2-PBS detection (validated in Cytometric bead array)

MP00720-3: 83720-4-PBS capture and 83720-1-PBS detection (validated in Cytometric bead array, Sandwich ELISA)

Unconjugated rabbit recombinant monoclonal antibody in PBS only (BSA and azide free) storage buffer at a concentration of 1 mg/mL, ready for conjugation. Created using Proteintech's proprietary in-house recombinant technology. Recombinant production enables unrivalled batch-to-batch consistency, easy scale-up, and future security of supply.

This conjugation ready format makes antibodies ideal for use in many applications including: ELISAs, multiplex assays requiring matched pairs, mass cytometry, and multiplex imaging applications. Antibody use should be optimized by the end user for each application and assay.

## Storage

**Storage:**  
Store at -80°C.  
**Storage Buffer:**  
PBS Only

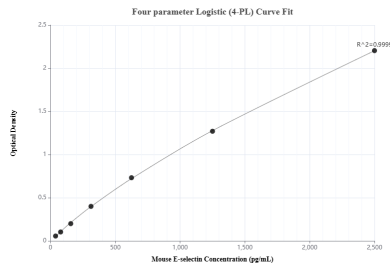
For technical support and original validation data for this product please contact:

T: 1 (888) 4PTGLAB (1-888-478-4522) (toll free in USA), or 1(312) 455-8498 (outside USA)

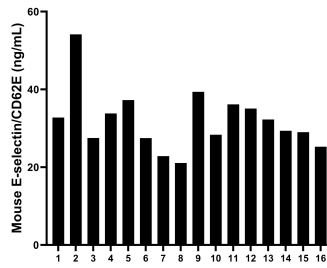
E: [proteintech@ptglab.com](mailto:proteintech@ptglab.com)  
W: [ptglab.com](http://ptglab.com)

**This product is exclusively available under Proteintech Group brand and is not available to purchase from any other manufacturer.**

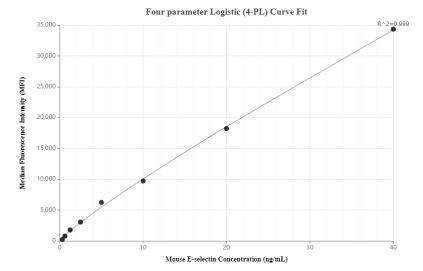
## Selected Validation Data



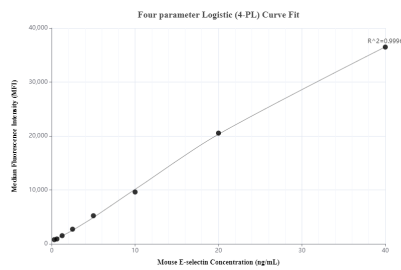
Sandwich ELISA standard curve of MP00720-3, Mouse E-selectin / CD62E Recombinant Matched Antibody Pair - PBS only. 83720-4-PBS was coated to a plate as the capture antibody and incubated with serial dilutions of standard Eg0610. 83720-1-PBS was HRP conjugated as the detection antibody. Range: 39.1-2500 pg/mL



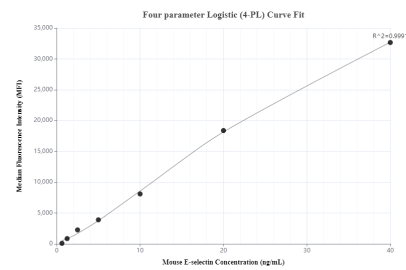
Serum of sixteen mice was measured. The E-selectin concentration of detected samples was determined to be 32.0 ng/mL with a range of 21.1 - 54.1 ng/mL.



Cytometric bead array standard curve of MP00720-1, MOUSE E-selectin/CD62E Recombinant Matched Antibody Pair, PBS Only. Capture antibody: 83720-4-PBS. Detection antibody: 83720-3-PBS. Standard: Eg0610. Range: 0.313-40 ng/mL



Cytometric bead array standard curve of MP00720-2, MOUSE E-selectin/CD62E Recombinant Matched Antibody Pair, PBS Only. Capture antibody: 83720-4-PBS. Detection antibody: 83720-2-PBS. Standard: Eg0610. Range: 0.313-40 ng/mL



Cytometric bead array standard curve of MP00720-3, MOUSE E-selectin/CD62E Recombinant Matched Antibody Pair, PBS Only. Capture antibody: 83720-4-PBS. Detection antibody: 83720-1-PBS. Standard: Eg0610. Range: 0.625-40 ng/mL