

For Research Use Only

# RAE1 Recombinant antibody, PBS Only

Catalog Number: 83712-4-PBS



## Basic Information

<b>Catalog Number:</b> 83712-4-PBS	<b>GenBank Accession Number:</b> BC103754	<b>Purification Method:</b> Protein A purification
<b>Size:</b> 100ug, Concentration: 1 mg/ml by Nanodrop;	<b>GeneID (NCBI):</b> 8480	<b>CloneNo.:</b> 240861B7
<b>Source:</b> Rabbit	<b>UNIPROT ID:</b> P78406	
<b>Isotype:</b> IgG	<b>Full Name:</b> RAE1 RNA export 1 homolog (S. pombe)	
<b>Immunogen Catalog Number:</b> AG12102	<b>Calculated MW:</b> 368 aa, 41 kDa	

## Applications

**Tested Applications:**  
WB, IHC, IF/ICC, ELISA

**Species Specificity:**  
human, mouse

## Background Information

RAE1 acts as a mRNA export factor involved in nucleocytoplasmic transport, it plays a role in mitotic bipolar spindle formation. (PMID: 33849972, MID: 17172455)

## Storage

**Storage:**  
Store at -80°C.

**Storage Buffer:**  
PBS Only

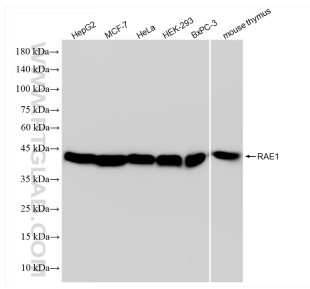
For technical support and original validation data for this product please contact:

T: 1 (888) 4PTGLAB (1-888-478-4522) (toll free in USA), or 1(312) 455-8498 (outside USA)

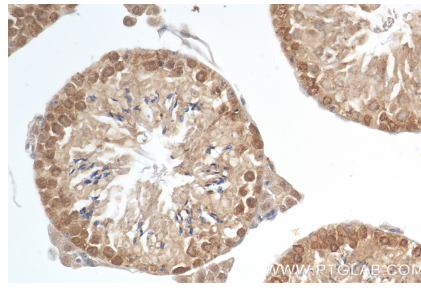
E: [proteintech@ptglab.com](mailto:proteintech@ptglab.com)  
W: [ptglab.com](http://ptglab.com)

This product is exclusively available under Proteintech Group brand and is not available to purchase from any other manufacturer.

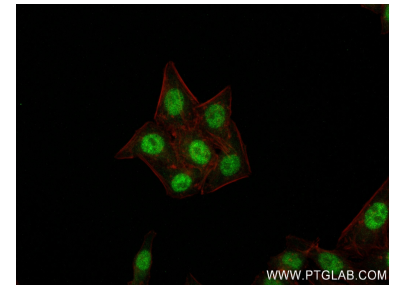
## Selected Validation Data



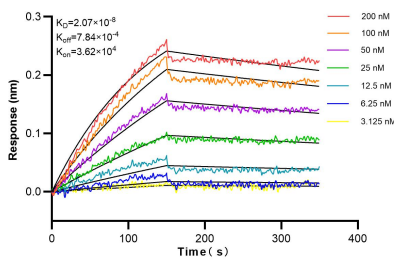
Various lysates were subjected to SDS PAGE followed by western blot with 83712-4-RR (RAE1 antibody) at dilution of 1:5000 incubated at room temperature for 1.5 hours. This data was developed using the same antibody clone with 83712-4-PBS in a different storage buffer formulation.



Immunohistochemical analysis of paraffin-embedded mouse testis tissue slide using 83712-4-RR (RAE1 antibody) at dilution of 1:500 (under 40x lens). Heat mediated antigen retrieval with Tris-EDTA buffer (pH 9.0). This data was developed using the same antibody clone with 83712-4-PBS in a different storage buffer formulation.



Immunofluorescent analysis of (4% PFA) fixed HepG2 cells using RAE1 antibody (83712-4-RR, Clone: 240861B7) at dilution of 1:250 and CoraLite@488-Conjugated AffiniPure Goat Anti-Rabbit IgG(H+L) (SA00013-2), CL594-Phalloidin (red). This data was developed using the same antibody clone with 83712-4-PBS in a different storage buffer formulation.



Biolayer interferometry (BLI) kinetic assays of 83712-4-RR against Human RAE1 were performed. The affinity constant is 20.7 nM.