

For Research Use Only

RAE1 Recombinant antibody, PBS Only (Capture/Detector)

Catalog Number: 83712-3-PBS



Basic Information

Catalog Number: 83712-3-PBS	GenBank Accession Number: BC103754	Purification Method: Protein A purification
Size: 100ug, Concentration: 1 mg/ml by Nanodrop;	GeneID (NCBI): 8480	CloneNo.: 240861H8
Source: Rabbit	UNIPROT ID: P78406	
Isotype: IgG	Full Name: RAE1 RNA export 1 homolog (S. pombe)	
Immunogen Catalog Number: AG12102	Calculated MW: 368 aa, 41 kDa	

Applications

Tested Applications:
Cytometric bead array, Sandwich ELISA, Indirect ELISA,
Sample test

Species Specificity:
human

Product Information

83712-3-PBS targets RAE1 as part of a matched antibody pair:

MP00683-1: 83712-3-PBS capture and 83712-1-PBS detection (validated in Cytometric bead array)

MP00683-2: 83712-3-PBS capture and 83712-2-PBS detection (validated in Cytometric bead array)

MP00683-4: 83712-5-PBS capture and 83712-3-PBS detection (validated in Sandwich ELISA)

Unconjugated rabbit recombinant monoclonal antibody in PBS only (BSA and azide free) storage buffer at a concentration of 1 mg/mL, ready for conjugation. Created using Proteintech's proprietary in-house recombinant technology. Recombinant production enables unrivalled batch-to-batch consistency, easy scale-up, and future security of supply.

This conjugation ready format makes antibodies ideal for use in many applications including: ELISAs, multiplex assays requiring matched pairs, mass cytometry, and multiplex imaging applications. Antibody use should be optimized by the end user for each application and assay.

Storage

Storage:
Store at -80°C.
Storage Buffer:
PBS Only

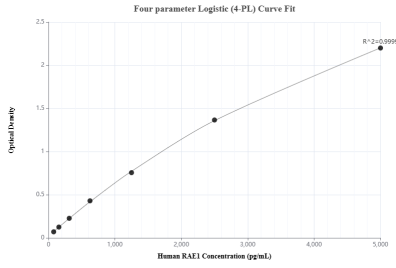
For technical support and original validation data for this product please contact:

T: 1 (888) 4PTGLAB (1-888-478-4522) (toll free
in USA), or 1(312) 455-8498 (outside USA)

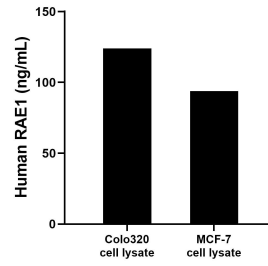
E: proteintech@ptglab.com
W: ptglab.com

This product is exclusively available under Proteintech Group brand and is not available to purchase from any other manufacturer.

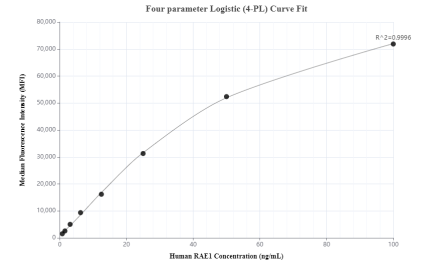
Selected Validation Data



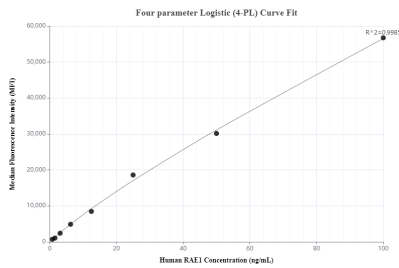
Sandwich ELISA standard curve of MP00683-4, Human RAE1 Recombinant Matched Antibody Pair - PBS only. 83712-5-PBS was coated to a plate as the capture antibody and incubated with serial dilutions of standard Ag12102. 83712-3-PBS was HRP conjugated as the detection antibody. Range: 78.1-5000 pg/mL



Colo320 and MCF-7 cell lysates were measured. The human RAE1 concentration of detected samples was determined to be 123.92 ng/mL (based on a 2.00 mg/mL extract load) in Colo320 cell lysate and 93.86 ng/mL (based on a 1.20 mg/mL extract load) in MCF-7 cell lysate.



Cytometric bead array standard curve of MP00683-1, RAE1 Recombinant Matched Antibody Pair, PBS Only. Capture antibody: 83712-3-PBS. Detection antibody: 83712-1-PBS. Standard: Ag12102. Range: 0.781-100 ng/mL



Cytometric bead array standard curve of MP00683-2, RAE1 Recombinant Matched Antibody Pair, PBS Only. Capture antibody: 83712-3-PBS. Detection antibody: 83712-2-PBS. Standard: Ag12102. Range: 0.781-100 ng/mL