

For Research Use Only

# RAE1 Recombinant antibody

Catalog Number: 83712-1-RR



## Basic Information

<b>Catalog Number:</b> 83712-1-RR	<b>GenBank Accession Number:</b> BC103754	<b>Purification Method:</b> Protein A purification
<b>Size:</b> 100ul , Concentration: 1000 ug/ml by Nanodrop;	<b>GeneID (NCBI):</b> 8480	<b>CloneNo.:</b> 240861E12
<b>Source:</b> Rabbit	<b>UNIPROT ID:</b> P78406	<b>Recommended Dilutions:</b> WB 1:5000-1:50000
<b>Isotype:</b> IgG	<b>Full Name:</b> RAE1 RNA export 1 homolog (S. pombe)	
<b>Immunogen Catalog Number:</b> AG12102	<b>Calculated MW:</b> 368 aa, 41 kDa	
	<b>Observed MW:</b> 41 kDa	

## Applications

**Tested Applications:**  
WB, FC (Intra), ELISA

**Species Specificity:**  
human, mouse

**Positive Controls:**  
WB : HepG2 cells, MCF-7 cells, HeLa cells, HEK-293 cells, BxPC-3 cells, mouse brain tissue, mouse thymus tissue

## Background Information

RAE1 acts as a mRNA export factor involved in nucleocytoplasmic transport, it plays a role in mitotic bipolar spindle formation. (PMID: 33849972, MID: 17172455)

## Storage

**Storage:**  
Store at -20°C. Stable for one year after shipment.

**Storage Buffer:**  
PBS with 0.02% sodium azide and 50% glycerol pH 7.3.

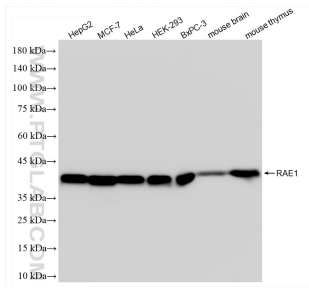
Aliquoting is unnecessary for -20°C storage

\*\*\* 20ul sizes contain 0.1% BSA

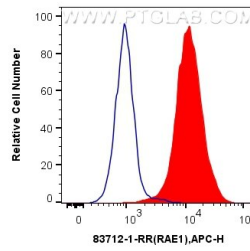
For technical support and original validation data for this product please contact:  
T: 1 (888) 4PTGLAB (1-888-478-4522) (toll free in USA), or 1(312) 455-8498 (outside USA)  
E: proteintech@ptglab.com  
W: ptglab.com

This product is exclusively available under Proteintech Group brand and is not available to purchase from any other manufacturer.

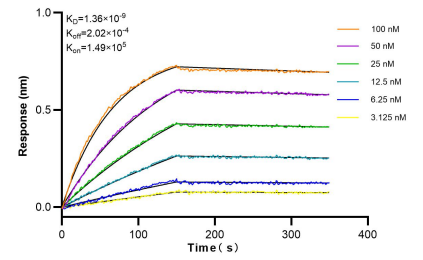
## Selected Validation Data



Various lysates were subjected to SDS PAGE followed by western blot with 83712-1-RR (RAE1 antibody) at dilution of 1:10000 incubated at room temperature for 1.5 hours.



$1 \times 10^6$  HepG2 cells were intracellularly stained with 0.25  $\mu$ g RAE1 Recombinant antibody (83712-1-RR, Clone:240861E12) and APC-Conjugated AffiniPure Goat Anti-Rabbit IgG(H+L)(red), or 0.25  $\mu$ g Isotype Control (blue). Cells were fixed with 4% PFA and permeabilized with Flow Cytometry Perm Buffer (PF00011-C).



Bioluminescence resonance energy transfer (BRET) kinetic assays of 83712-1-RR against Human RAE1 were performed. The affinity constant is 1.36 nM.