

For Research Use Only

RAE1 Recombinant antibody, PBS Only (Capture/Detector)

Catalog Number: 83712-1-PBS



Basic Information

Catalog Number: 83712-1-PBS	GenBank Accession Number: BC103754	Purification Method: Protein A purification
Size: 100ug, Concentration: 1 mg/ml by Nanodrop;	GeneID (NCBI): 8480	CloneNo.: 240861E12
Source: Rabbit	UNIPROT ID: P78406	
Isotype: IgG	Full Name: RAE1 RNA export 1 homolog (S. pombe)	
Immunogen Catalog Number: AG12102	Calculated MW: 368 aa, 41 kDa	
	Observed MW: 41 kDa	

Applications

Tested Applications:
WB, FC (Intra), Cytometric bead array, Indirect ELISA

Species Specificity:
human, mouse

Product Information

83712-1-PBS targets RAE1 as part of a matched antibody pair:

MP00683-1: 83712-3-PBS capture and 83712-1-PBS detection (validated in Cytometric bead array)

MP00683-3: 83712-1-PBS capture and 83712-2-PBS detection (validated in Cytometric bead array)

Unconjugated rabbit recombinant monoclonal antibody in PBS only (BSA and azide free) storage buffer at a concentration of 1 mg/mL, ready for conjugation. Created using Proteintech's proprietary in-house recombinant technology. Recombinant production enables unrivalled batch-to-batch consistency, easy scale-up, and future security of supply.

This conjugation ready format makes antibodies ideal for use in many applications including: ELISAs, multiplex assays requiring matched pairs, mass cytometry, and multiplex imaging applications. Antibody use should be optimized by the end user for each application and assay.

Background Information

RAE1 acts as a mRNA export factor involved in nucleocytoplasmic transport, it plays a role in mitotic bipolar spindle formation. (PMID: 33849972, MID: 17172455)

Storage

Storage:
Store at -80°C.
Storage Buffer:
PBS Only

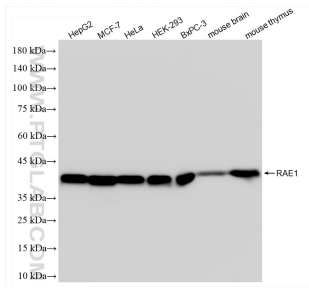
For technical support and original validation data for this product please contact:

T: 1 (888) 4PTGLAB (1-888-478-4522) (toll free
in USA), or 1(312) 455-8498 (outside USA)

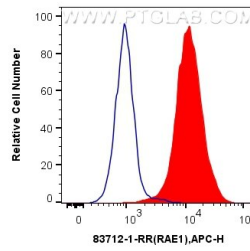
E: proteintech@ptglab.com
W: ptglab.com

This product is exclusively available under Proteintech Group brand and is not available to purchase from any other manufacturer.

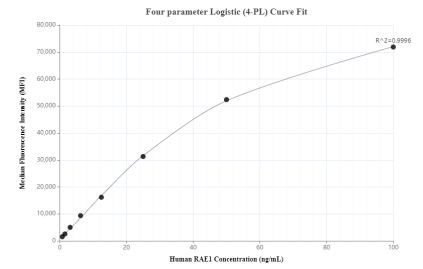
Selected Validation Data



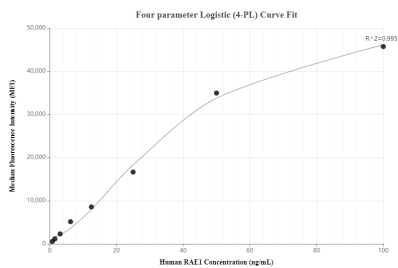
Various lysates were subjected to SDS PAGE followed by western blot with 83712-1-RR (RAE1 antibody) at dilution of 1:10000 incubated at room temperature for 1.5 hours. This data was developed using the same antibody clone with 83712-1-PBS in a different storage buffer formulation.



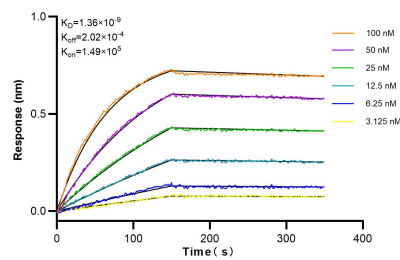
1×10^6 HepG2 cells were intracellularly stained with 0.25 ug RAE1 Recombinant antibody (83712-1-RR, Clone:240861E12) and APC-Conjugated AffiniPure Goat Anti-Rabbit IgG(H+L)(red), or 0.25 ug Isotype Control (blue). Cells were fixed with 4% PFA and permeabilized with Flow Cytometry Perm Buffer (PF00011-C). This data was developed using the same antibody clone with 83712-1-PBS in a different storage buffer formulation.



Cytometric bead array standard curve of MP00683-1, RAE1 Recombinant Matched Antibody Pair, PBS Only. Capture antibody: 83712-3-PBS. Detection antibody: 83712-1-PBS. Standard: Ag12102. Range: 0.781-100 ng/mL.



Cytometric bead array standard curve of MP00683-3, RAE1 Recombinant Matched Antibody Pair, PBS Only. Capture antibody: 83712-1-PBS. Detection antibody: 83712-2-PBS. Standard: Ag12102. Range: 0.781-100 ng/mL.



Biolayer interferometry (BLI) kinetic assays of 83712-1-RR against Human RAE1 were performed. The affinity constant is 1.36 nM.