

For Research Use Only

C-Reactive Protein/CRP Recombinant antibody

Catalog Number:83711-1-RR



Basic Information

Catalog Number: 83711-1-RR	GenBank Accession Number: NM_007768	Purification Method: Protein A purification
Size: 100ul , Concentration: 1000 ug/ml by Nanodrop;	GeneID (NCBI): 12944	CloneNo.: 240369B10
Source: Rabbit	UNIPROT ID: P14847	Recommended Dilutions: WB 1:5000-1:50000
Isotype: IgG	Full Name: C-reactive protein, pentraxin-related	
	Observed MW: 25-28 kDa	

Applications

Tested Applications: WB, ELISA	Positive Controls: WB : mouse serum,
Species Specificity: mouse	

Background Information

C-reactive protein (CRP) is an acute-phase serum protein synthesized by the liver in response to interleukin-6 (IL-6) during inflammation. The name CRP derives from its ability to react with the C polysaccharide of Streptococcus pneumoniae. CRP is an annular, pentameric protein belonging to the pentraxin family. CRP displays several functions associated with host defense: it promotes agglutination, bacterial capsular swelling, phagocytosis, and complement fixation through its calcium-dependent binding to phosphorylcholine. It is used mainly as a marker of inflammation. This antibody is specific for mouse Crp.

Storage

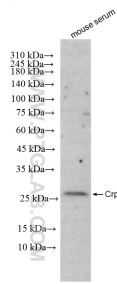
Storage:
Store at -20°C. Stable for one year after shipment.
Storage Buffer:
PBS with 0.02% sodium azide and 50% glycerol pH 7.3.
Aliquoting is unnecessary for -20°C storage

***** 20ul sizes contain 0.1%BSA**

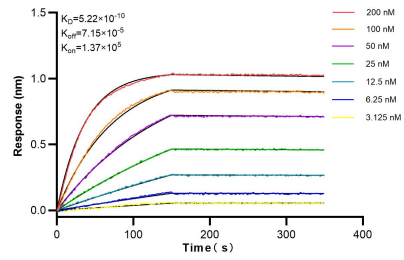
For technical support and original validation data for this product please contact:
T: 1 (888) 4PTGLAB (1-888-478-4522) (toll free in USA), or 1(312) 455-8498 (outside USA) E: proteintech@ptglab.com W: ptglab.com

This product is exclusively available under Proteintech Group brand and is not available to purchase from any other manufacturer.

Selected Validation Data



mouse serum were subjected to SDS PAGE followed by western blot with 83711-1-RR (C-Reactive Protein/CRP antibody) at dilution of 1:10000 incubated at room temperature for 1.5 hours.



Biolayer interferometry (BLI) kinetic assays of 83711-1-RR against Mouse Crp were performed. The affinity constant is 0.522 nM.