

For Research Use Only

Mouse C-Reactive Protein/CRP Recombinant antibody, PBS Only (Capture)

Catalog Number: 83711-1-PBS



Basic Information

Catalog Number: 83711-1-PBS	GenBank Accession Number: NM_007768	Purification Method: Protein A purification
Size: 100ug , Concentration: 1 mg/ml by Nanodrop;	GeneID (NCBI): 12944	CloneNo.: 240369B10
Source: Rabbit	UNIPROT ID: P14847	
Isotype: IgG	Full Name: C-reactive protein, pentraxin-related	
	Observed MW: 25-28 kDa	

Applications

Tested Applications:
WB, Sandwich ELISA, Indirect ELISA, Sample test

Species Specificity:
mouse

Product Information

83711-1-PBS targets C-Reactive Protein/CRP as part of a matched antibody pair.

MP00815-1: 83711-1-PBS capture and 83711-2-PBS detection (validated in Sandwich ELISA)

Unconjugated rabbit recombinant monoclonal antibody in PBS only (BSA and azide free) storage buffer at a concentration of 1 mg/mL, ready for conjugation. Created using Proteintech's proprietary in-house recombinant technology. Recombinant production enables unrivalled batch-to-batch consistency, easy scale-up, and future security of supply.

This conjugation ready format makes antibodies ideal for use in many applications including: ELISAs, multiplex assays requiring matched pairs, mass cytometry, and multiplex imaging applications. Antibody use should be optimized by the end user for each application and assay.

Background Information

C-reactive protein (CRP) is an acute-phase serum protein synthesized by the liver in response to interleukin-6 (IL-6) during inflammation. The name CRP derives from its ability to react with the C polysaccharide of Streptococcus pneumoniae. CRP is an annular, pentameric protein belonging to the pentraxin family. CRP displays several functions associated with host defense: it promotes agglutination, bacterial capsular swelling, phagocytosis, and complement fixation through its calcium-dependent binding to phosphorylcholine. It is used mainly as a marker of inflammation. This antibody is specific for mouse Crp.

Storage

Storage:
Store at -80°C.
Storage Buffer:
PBS Only

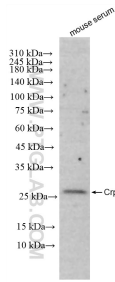
For technical support and original validation data for this product please contact:

T: 1 (888) 4PTGLAB (1-888-478-4522) (toll free
in USA), or 1(312) 455-8498 (outside USA)

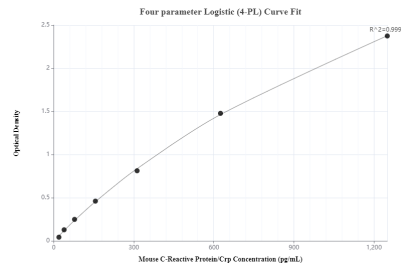
E: proteintech@ptglab.com
W: ptglab.com

This product is exclusively available under Proteintech Group brand and is not available to purchase from any other manufacturer.

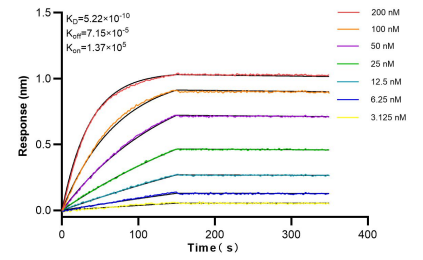
Selected Validation Data



mouse serum were subjected to SDS PAGE followed by western blot with 83711-1-RR (C-Reactive Protein/CRP antibody) at dilution of 1:10000 incubated at room temperature for 1.5 hours. This data was developed using the same antibody clone with 83711-1-PBS in a different storage buffer formulation.



Sandwich ELISA standard curve of MP00815-1, mouse Crp Recombinant Matched Antibody Pair - PBS only. 83711-1-PBS was coated to a plate as the capture antibody and incubated with serial dilutions of standard Eg0756. 83711-2-PBS was HRP conjugated as the detection antibody. Range: 19.53-1250 pg/mL



Bi-layer interferometry (BLI) kinetic assays of 83711-1-RR against Mouse Crp were performed. The affinity constant is 0.522 nM.