

For Research Use Only

FGFR3 Recombinant antibody, PBS Only (Detector)

Catalog Number: 83701-1-PBS



Basic Information

Catalog Number: 83701-1-PBS	GenBank Accession Number: NM_001163213.1	Purification Method: Protein A purification
Size: 100ug, Concentration: 1 mg/ml by Nanodrop;	GeneID (NCBI): 2261	CloneNo.: 240758B1
Source: Rabbit	UNIPROT ID: P22607-2	
Isotype: IgG	Full Name: fibroblast growth factor receptor 3	
	Calculated MW: 88kd	

Applications

Tested Applications:
Cytometric bead array, Sandwich ELISA, Indirect ELISA,
Sample test

Species Specificity:
human

Product Information

83701-1-PBS targets FGFR3 as part of a matched antibody pair.

MP00407-2: 83701-2-PBS capture and 83701-1-PBS detection (validated in Cytometric bead array)

MP00407-4: 83701-3-PBS capture and 83701-1-PBS detection (validated in Cytometric bead array, Sandwich ELISA)

Unconjugated rabbit recombinant monoclonal antibody in PBS only (BSA and azide free) storage buffer at a concentration of 1 mg/mL, ready for conjugation. Created using Proteintech's proprietary in-house recombinant technology. Recombinant production enables unrivalled batch-to-batch consistency, easy scale-up, and future security of supply.

This conjugation ready format makes antibodies ideal for use in many applications including: ELISAs, multiplex assays requiring matched pairs, mass cytometry, and multiplex imaging applications. Antibody use should be optimized by the end user for each application and assay.

Storage

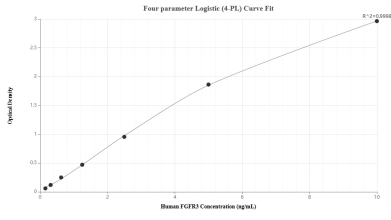
Storage:
Store at -80°C.

Storage Buffer:
PBS Only

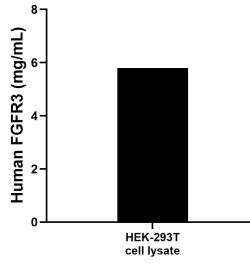
For technical support and original validation data for this product please contact:
T: 1 (888) 4PTGLAB (1-888-478-4522) (toll free in USA), or 1(312) 455-8498 (outside USA) E: proteintech@ptglab.com
W: ptglab.com

This product is exclusively available under Proteintech Group brand and is not available to purchase from any other manufacturer.

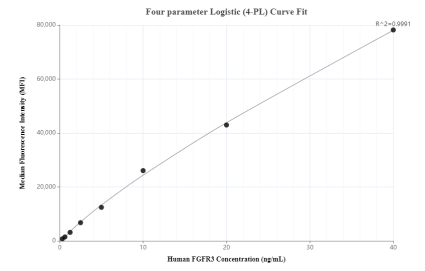
Selected Validation Data



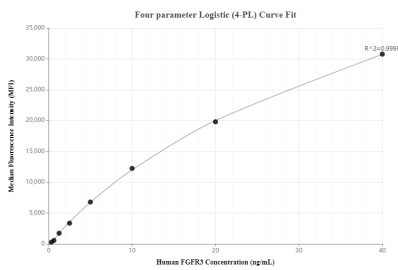
Sandwich ELISA standard curve of MP00407-4, Human FGFR3 Recombinant Matched Antibody Pair - PBS only. 83701-3-PBS was coated to a plate as the capture antibody and incubated with serial dilutions of standard Eg1041. 83701-1-PBS was HRP conjugated as the detection antibody. Range: 0.16-10 ng/mL



HEK-293T cell lysate was measured. The human FGFR3 concentration was determined to be 5.8 mg/mL in HEK-293T cell lysate.



Cytometric bead array standard curve of MP00407-2, FGFR3 Recombinant Matched Antibody Pair, PBS Only. Capture antibody: 83701-2-PBS. Detection antibody: 83701-1-PBS. Standard: Eg1041. Range: 0.313-40 ng/mL



Cytometric bead array standard curve of MP00407-4, FGFR3 Recombinant Matched Antibody Pair, PBS Only. Capture antibody: 83701-3-PBS. Detection antibody: 83701-1-PBS. Standard: Eg1041. Range: 0.313-40 ng/mL