

For Research Use Only

CD126/IL-6R alpha Recombinant antibody, PBS Only (Detector)

Catalog Number: 83688-2-PBS



Basic Information

Catalog Number: 83688-2-PBS	GenBank Accession Number: BC132684	Purification Method: Protein A purification
Size: 100ug, Concentration: 1 mg/ml by Nanodrop;	GeneID (NCBI): 3570	CloneNo.: 24073486
Source: Rabbit	UNIPROT ID: P08887	
Isotype: IgG	Full Name: interleukin 6 receptor	
	Calculated MW: 468 aa, 52 kDa	

Applications

Tested Applications:
Cytometric bead array, Sandwich ELISA, Indirect ELISA, Sample test

Species Specificity:
human

Product Information

83688-2-PBS targets CD126/IL-6R alpha as part of a matched antibody pair:

MP00676-1: 83688-3-PBS capture and 83688-2-PBS detection (validated in Cytometric bead array, Sandwich ELISA)

MP00676-2: 83688-1-PBS capture and 83688-2-PBS detection (validated in Cytometric bead array)

Unconjugated rabbit recombinant monoclonal antibody in PBS only (BSA and azide free) storage buffer at a concentration of 1 mg/mL, ready for conjugation. Created using Proteintech's proprietary in-house recombinant technology. Recombinant production enables unrivalled batch-to-batch consistency, easy scale-up, and future security of supply.

This conjugation ready format makes antibodies ideal for use in many applications including: ELISAs, multiplex assays requiring matched pairs, mass cytometry, and multiplex imaging applications. Antibody use should be optimized by the end user for each application and assay.

Storage

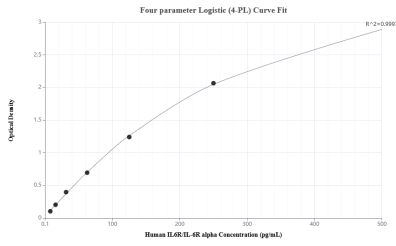
Storage:
Store at -80°C.

Storage Buffer:
PBS Only

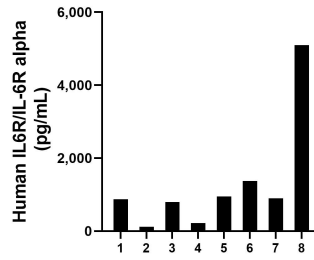
For technical support and original validation data for this product please contact:
T: 1 (888) 4PTGLAB (1-888-478-4522) (toll free in USA), or 1(312) 455-8498 (outside USA) E: proteintech@ptglab.com
W: ptglab.com

This product is exclusively available under Proteintech Group brand and is not available to purchase from any other manufacturer.

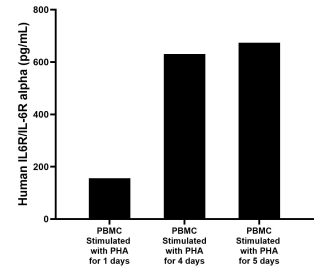
Selected Validation Data



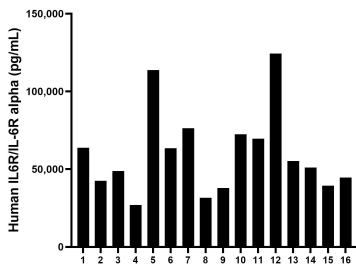
Sandwich ELISA standard curve of MP00676-1, Human IL6R/IL-6R alpha Recombinant Matched Antibody Pair - PBS only. 83688-3-PBS was coated to a plate as the capture antibody and incubated with serial dilutions of standard Eg0490. 83688-2-PBS was HRP conjugated as the detection antibody. Range: 7.8-500 pg/mL



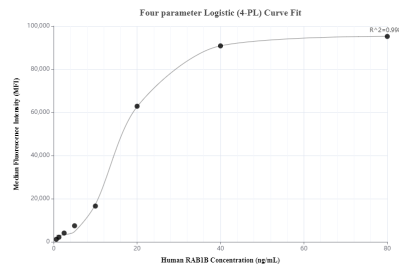
Urine of eight humans was measured. The human IL6R/IL-6R alpha concentration of these samples was determined to be 1,291.5 pg/mL, with a range of 119.4 - 5,099.9 pg/mL.



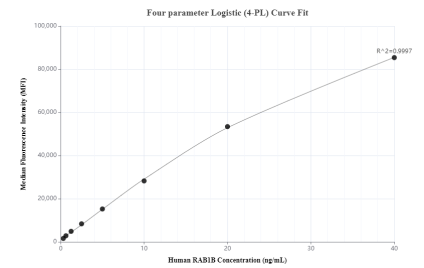
Human peripheral blood mononuclear cells (PBMC) (1×10^6 cells/mL) were cultured in DMEM supplemented with 8% fetal bovine serum, 5 μ M β -mercaptoethanol, 2 mM L-glutamine, 100 U/mL penicillin, and 100 μ g/mL streptomycin sulfate. Cells were cultured unstimulated or stimulated with 10 μ g/mL PHA for 1 day, 4 days and 5 days. Aliquots of the cell culture supernates were removed and assayed for levels of human IL6.



Serum of sixteen humans was measured. The human IL6R/IL-6R alpha concentration of these samples was determined to be 60,089 pg/mL, with a range of 37,850.6 - 124,335.2 pg/mL.



Cytometric bead array standard curve of MP00676-1, CD126/IL-6R alpha Recombinant Matched Antibody Pair, PBS Only. Capture antibody: 83688-3-PBS. Detection antibody: 83688-2-PBS. Standard: Eg0490. Range: 0.625-80 ng/mL.



Cytometric bead array standard curve of MP00676-2, CD126/IL-6R alpha Recombinant Matched Antibody Pair, PBS Only. Capture antibody: 83688-1-PBS. Detection antibody: 83688-2-PBS. Standard: Eg0490. Range: 0.313-40 ng/mL.