

For Research Use Only

# Beta-2-Microglobulin Recombinant antibody, PBS Only (Detector)

Catalog Number: 83683-5-PBS



## Basic Information

<b>Catalog Number:</b> 83683-5-PBS	<b>GenBank Accession Number:</b> BC032589	<b>Purification Method:</b> Protein A purification
<b>Size:</b> 100ug, Concentration: 1 mg/ml by Nanodrop;	<b>GeneID (NCBI):</b> 567	<b>CloneNo.:</b> 240660B3
<b>Source:</b> Rabbit	<b>ENSEMBL Gene ID:</b> ENSG00000166710	
<b>Isotype:</b> IgG	<b>UNIPROT ID:</b> P61769	
<b>Immunogen Catalog Number:</b> AG4433	<b>Full Name:</b> beta-2-microglobulin	
	<b>Calculated MW:</b> 119 aa, 14 kDa	

## Applications

**Tested Applications:**  
Sandwich ELISA, Indirect ELISA, Sample test

**Species Specificity:**  
human

## Product Information

83683-5-PBS targets Beta-2-Microglobulin as part of a matched antibody pair:

MP00673-3: 83683-1-PBS capture and 83683-5-PBS detection (validated in Sandwich ELISA)

Unconjugated rabbit recombinant monoclonal antibody in PBS only (BSA and azide free) storage buffer at a concentration of 1 mg/mL, ready for conjugation. Created using Proteintech's proprietary in-house recombinant technology. Recombinant production enables unrivalled batch-to-batch consistency, easy scale-up, and future security of supply.

This conjugation ready format makes antibodies ideal for use in many applications including: ELISAs, multiplex assays requiring matched pairs, mass cytometry, and multiplex imaging applications. Antibody use should be optimized by the end user for each application and assay.

## Storage

**Storage:**  
Store at -80°C.

**Storage Buffer:**  
PBS Only

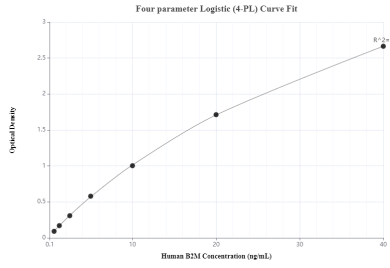
For technical support and original validation data for this product please contact:

T: 1 (888) 4PTGLAB (1-888-478-4522) (toll free in USA), or 1(312) 455-8498 (outside USA)

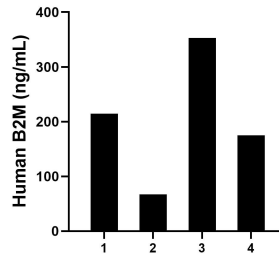
E: [proteintech@ptglab.com](mailto:proteintech@ptglab.com)  
W: [ptglab.com](http://ptglab.com)

**This product is exclusively available under Proteintech Group brand and is not available to purchase from any other manufacturer.**

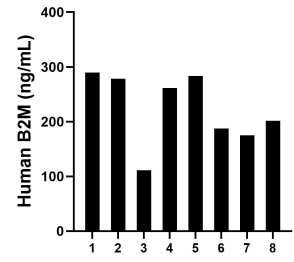
## Selected Validation Data



Sandwich ELISA standard curve of MP00673-3, human B2M Recombinant Matched Antibody Pair - PBS only. 83683-1-PBS was coated to a plate as the capture antibody and incubated with serial dilutions of standard Ag4433. 83683-5-PBS was HRP conjugated as the detection antibody. Range: 0.625-40 ng/mL



Urine of eight individual healthy human donors was measured. The B2M concentration of detected samples was determined to be 202.46 ng/mL with a range of 67.46-352.77 ng/mL



Serum of eight individual healthy human donors was measured. The B2M concentration of detected samples was determined to be 223.48 ng/mL with a range of 111.44-289.89 ng/mL