

For Research Use Only

# B2M Recombinant antibody, PBS Only (Capture)

Catalog Number: 83683-11-PBS



## Basic Information

<b>Catalog Number:</b> 83683-11-PBS	<b>GenBank Accession Number:</b> BC032589	<b>Purification Method:</b> Protein A purification
<b>Size:</b> 100ug, Concentration: 1 mg/ml by Nanodrop;	<b>GeneID (NCBI):</b> 567	<b>CloneNo.:</b> 241308G10
<b>Source:</b> Rabbit	<b>ENSEMBL Gene ID:</b> ENSG00000166710	
<b>Isotype:</b> IgG	<b>UNIPROT ID:</b> P61769	
	<b>Full Name:</b> beta-2-microglobulin	
	<b>Calculated MW:</b> 119 aa, 14 kDa	

## Applications

**Tested Applications:**  
Sandwich ELISA, Indirect ELISA, Sample test

**Species Specificity:**  
human

## Product Information

83683-11-PBS targets B2M as part of a matched antibody pair:

MP00673-4: 83683-11-PBS capture and 83683-10-PBS detection (validated in Sandwich ELISA)

Unconjugated rabbit recombinant monoclonal antibody in PBS only (BSA and azide free) storage buffer at a concentration of 1 mg/mL, ready for conjugation. Created using Proteintech's proprietary in-house recombinant technology. Recombinant production enables unrivalled batch-to-batch consistency, easy scale-up, and future security of supply.

This conjugation ready format makes antibodies ideal for use in many applications including: ELISAs, multiplex assays requiring matched pairs, mass cytometry, and multiplex imaging applications. Antibody use should be optimized by the end user for each application and assay.

## Storage

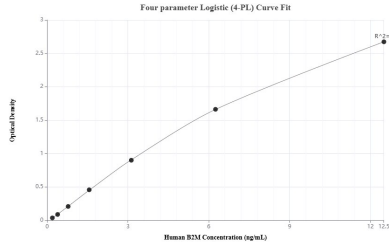
**Storage:**  
Store at -80°C.

**Storage Buffer:**  
PBS Only

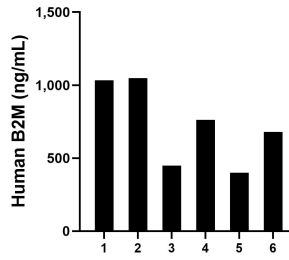
For technical support and original validation data for this product please contact:  
T: 1 (888) 4PTGLAB (1-888-478-4522) (toll free in USA), or 1(312) 455-8498 (outside USA)      E: proteintech@ptglab.com  
W: ptglab.com

This product is exclusively available under Proteintech Group brand and is not available to purchase from any other manufacturer.

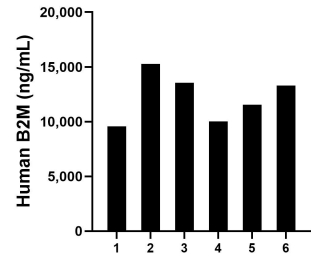
## Selected Validation Data



Sandwich ELISA standard curve of MP00673-4, Human B2M Recombinant Matched Antibody Pair - PBS only. 83683-11-PBS was coated to a plate as the capture antibody and incubated with serial dilutions of standard Eg2284. 83683-10-PBS was HRP conjugated as the detection antibody. Range: 0.195-12.5 ng/mL



Urine of six individual healthy human donors was measured. The human B2M concentration of detected samples was determined to be 728.33 ng/mL with a range of 399.66 - 1,048.75 ng/mL



Serum of six individual healthy human donors was measured. The human B2M concentration of detected samples was determined to be 12,201.96 ng/mL with a range of 9,574.44 - 15,258.19 ng/mL