

For Research Use Only

B2M Recombinant antibody, PBS Only (Capture)

Catalog Number: 83683-1-PBS



Basic Information

Catalog Number: 83683-1-PBS	GenBank Accession Number: BC032589	Purification Method: Protein A purification
Size: 100ug, Concentration: 1 mg/ml by Nanodrop;	GeneID (NCBI): 567	CloneNo.: 240660B1
Source: Rabbit	ENSEMBL Gene ID: ENSG00000166710	
Isotype: IgG	UNIPROT ID: P61769	
Immunogen Catalog Number: AG4433	Full Name: beta-2-microglobulin	
	Calculated MW: 119 aa, 14 kDa	

Applications

Tested Applications:
Cytometric bead array, Sandwich ELISA, Indirect ELISA, Sample test

Species Specificity:
human

Product Information

83683-1-PBS targets B2M as part of a matched antibody pair:

MP00673-1: 83683-1-PBS capture and 83683-2-PBS detection (validated in Cytometric bead array)

MP00673-3: 83683-1-PBS capture and 83683-5-PBS detection (validated in Sandwich ELISA)

Unconjugated rabbit recombinant monoclonal antibody in PBS only (BSA and azide free) storage buffer at a concentration of 1 mg/mL, ready for conjugation. Created using Proteintech's proprietary in-house recombinant technology. Recombinant production enables unrivalled batch-to-batch consistency, easy scale-up, and future security of supply.

This conjugation ready format makes antibodies ideal for use in many applications including: ELISAs, multiplex assays requiring matched pairs, mass cytometry, and multiplex imaging applications. Antibody use should be optimized by the end user for each application and assay.

Storage

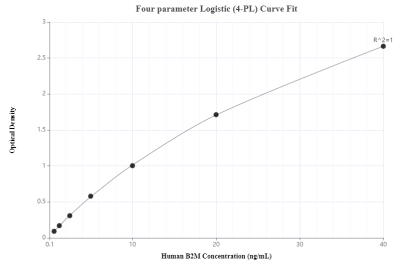
Storage:
Store at -80°C.

Storage Buffer:
PBS Only

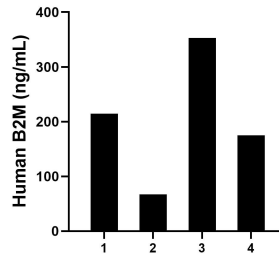
For technical support and original validation data for this product please contact:
T: 1 (888) 4PTGLAB (1-888-478-4522) (toll free in USA), or 1(312) 455-8498 (outside USA) E: proteintech@ptglab.com
W: ptglab.com

This product is exclusively available under Proteintech Group brand and is not available to purchase from any other manufacturer.

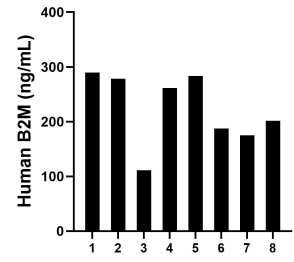
Selected Validation Data



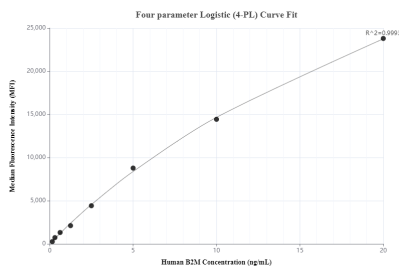
Sandwich ELISA standard curve of MP00673-3, human B2M Recombinant Matched Antibody Pair - PBS only. 83683-1-PBS was coated to a plate as the capture antibody and incubated with serial dilutions of standard Ag4433. 83683-5-PBS was HRP conjugated as the detection antibody. Range: 0.625-40 ng/mL



Urine of eight individual healthy human donors was measured. The B2M concentration of detected samples was determined to be 202.46 ng/mL with a range of 67.46-352.77 ng/mL.



Serum of eight individual healthy human donors was measured. The B2M concentration of detected samples was determined to be 223.48 ng/mL with a range of 111.44-289.89 ng/mL.



Cytometric bead array standard curve of MP00673-1, B2M Recombinant Matched Antibody Pair, PBS Only. Capture antibody: 83683-1-PBS. Detection antibody: 83683-2-PBS. Standard: Ag4433. Range: 0.156-20 ng/mL