

For Research Use Only

CLEC12A Recombinant antibody

Catalog Number:83680-5-RR



Basic Information

Catalog Number: 83680-5-RR	GenBank Accession Number: BC126291	Purification Method: Protein A purification
Size: 100ul , Concentration: 1000 ug/ml by Nanodrop;	GeneID (NCBI): 160364	CloneNo.: 240791C2
Source: Rabbit	UNIPROT ID: Q5QGZ9	Recommended Dilutions: WB 1:5000-1:50000
Isotype: IgG	Full Name: C-type lectin domain family 12, member A	
	Calculated MW: 31 kDa	
	Observed MW: 55-75 kDa	

Applications

Tested Applications: WB, ELISA	Positive Controls: WB : U-937 cells,
Species Specificity: human	

Background Information

CLEC12A, also known as CD371, M1CL, DCAL-2 or CLL-1, is a type II transmembrane glycoprotein and a member of the C-type lectin superfamily (PMID: 30401586). This protein, which contains a single C-type lectin-like domain and a cytoplasmic immunoreceptor tyrosine-based inhibitory motif (ITIM), is related to LOX-1 and Dectin-1 and is variably spliced and highly N-glycosylated (PMID: 14739280). Its ITIM sequence recruits the tyrosine phosphatases SHP-1 and SHP-2 to negatively regulate Syk signaling. In humans, CLEC12A is mainly expressed on myeloid cells, being found on monocytes, granulocytes, macrophages and DC subsets, and at lower levels on CD4+ T cells (PMID: 32477350). The observed molecular weight of CLEC12A is between 40 and 75 kDa, which is much higher than the predicted molecular weight due to glycosylation (PMID: 14739280).

Storage

Storage:
Store at -20°C. Stable for one year after shipment.
Storage Buffer:
PBS with 0.02% sodium azide and 50% glycerol pH 7.3.
Aliquoting is unnecessary for -20°C storage

*** 20ul sizes contain 0.1% BSA

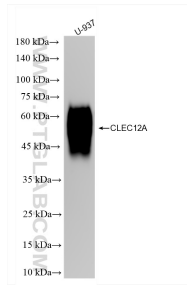
For technical support and original validation data for this product please contact:

T: 1 (888) 4PTGLAB (1-888-478-4522) (toll free in USA), or 1(312) 455-8498 (outside USA)

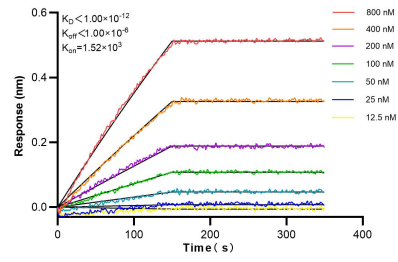
E: proteintech@ptglab.com
W: ptglab.com

This product is exclusively available under Proteintech Group brand and is not available to purchase from any other manufacturer.

Selected Validation Data



U-937 cells were subjected to SDS PAGE followed by western blot with 83680-5-RR (CLEC12A antibody) at dilution of 1:10000 incubated at room temperature for 1.5 hours.



Biolayer interferometry (BLI) kinetic assays of 83680-5-RR against Human CLEC12A were performed. The affinity constant is below 1 pM.