

For Research Use Only

# PBRM1 Recombinant antibody, PBS Only (Capture)

Catalog Number: 83677-2-PBS



## Basic Information

<b>Catalog Number:</b> 83677-2-PBS	<b>GenBank Accession Number:</b> BC015323	<b>Purification Method:</b> Protein A purification
<b>Size:</b> 100ug, Concentration: 1 mg/ml by Nanodrop;	<b>GeneID (NCBI):</b> 55193	<b>CloneNo.:</b> 240655H5
<b>Source:</b> Rabbit	<b>UNIPROT ID:</b> Q86U86	
<b>Isotype:</b> IgG	<b>Full Name:</b> polybromo 1	
<b>Immunogen Catalog Number:</b> AG33623	<b>Calculated MW:</b> 180 kDa	
	<b>Observed MW:</b> 180-195 kDa	

## Applications

**Tested Applications:**  
WB, IF/ICC, Cytometric bead array, Indirect ELISA

**Species Specificity:**  
human, mouse

## Product Information

83677-2-PBS targets PBRM1 as part of a matched antibody pair:

MP00656-3: 83677-2-PBS capture and 83677-3-PBS detection (validated in Cytometric bead array)

Unconjugated rabbit recombinant monoclonal antibody in PBS only (BSA and azide free) storage buffer at a concentration of 1 mg/mL, ready for conjugation. Created using Proteintech's proprietary in-house recombinant technology. Recombinant production enables unrivalled batch-to-batch consistency, easy scale-up, and future security of supply.

This conjugation ready format makes antibodies ideal for use in many applications including: ELISAs, multiplex assays requiring matched pairs, mass cytometry, and multiplex imaging applications. Antibody use should be optimized by the end user for each application and assay.

## Background Information

PBRM1, also named hPB1 BAF180 and Polybromo-1D, acts as a negative regulator of cell proliferation. PBRM1 is the second major mutated clear cell RCC cancer gene after VHL. PBRM1 loss is associated with low grade features.

## Storage

**Storage:**  
Store at -80°C.  
**Storage Buffer:**  
PBS Only

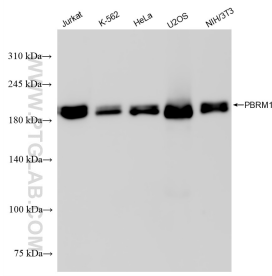
For technical support and original validation data for this product please contact:

T: 1 (888) 4PTGLAB (1-888-478-4522) (toll free in USA), or 1(312) 455-8498 (outside USA)

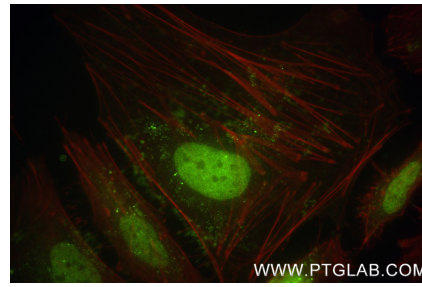
E: [proteintech@ptglab.com](mailto:proteintech@ptglab.com)  
W: [ptglab.com](http://ptglab.com)

**This product is exclusively available under Proteintech Group brand and is not available to purchase from any other manufacturer.**

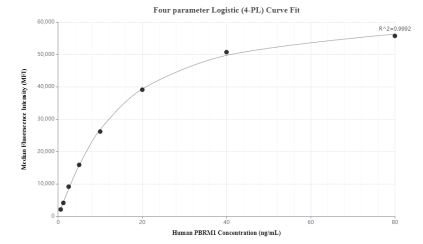
## Selected Validation Data



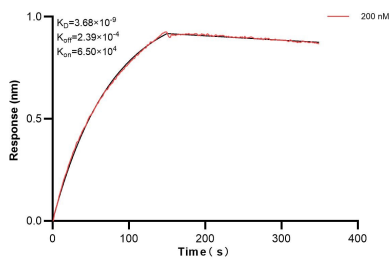
Various lysates were subjected to SDS PAGE followed by western blot with 83677-2-RR (PBRM1 antibody) at dilution of 1:5000 incubated at room temperature for 1.5 hours. This data was developed using the same antibody clone with 83677-2-PBS in a different storage buffer formulation.



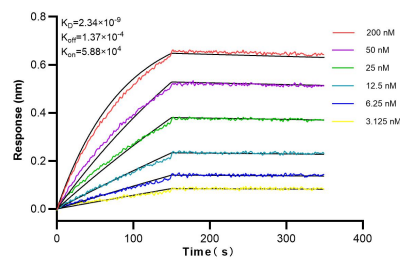
Immunofluorescent analysis of (4% PFA) fixed HeLa cells using PBRM1 antibody (83677-2-RR, Clone: 240655H5) at dilution of 1:1000 and CoraLite® 488-Conjugated Goat Anti-Rabbit IgG(H+L) (SA00013-2), CL594-Phalloidin (red). This data was developed using the same antibody clone with 83677-2-PBS in a different storage buffer formulation.



Cytometric bead array standard curve of MP00656-3, PBRM1 Recombinant Matched Antibody Pair, PBS Only. Capture antibody: 83677-2-PBS. Detection antibody: 83677-3-PBS. Standard: Ag33623. Range: 0.625-80 ng/mL.



Biolayer interferometry (BLI) kinetic assay of 83677-2-PBS against Human PBRM1 was performed. The affinity constant is 3.68 nM.



Biolayer interferometry (BLI) kinetic assays of 83677-2-RR against Human PBRM1 were performed. The affinity constant is 2.34 nM.