

For Research Use Only

# MYLK3 Recombinant antibody

Catalog Number:83673-3-RR



## Basic Information

<b>Catalog Number:</b> 83673-3-RR	<b>GenBank Accession Number:</b> BC109097	<b>Purification Method:</b> Protein A purification
<b>Size:</b> 100ul , Concentration: 1000 ug/ml by Nanodrop;	<b>GeneID (NCBI):</b> 91807	<b>CloneNo.:</b> 240762G7
<b>Source:</b> Rabbit	<b>UNIPROT ID:</b> Q32MK0	<b>Recommended Dilutions:</b> WB 1:1000-1:4000
<b>Isotype:</b> IgG	<b>Full Name:</b> myosin light chain kinase 3	
<b>Immunogen Catalog Number:</b> AG16137	<b>Calculated MW:</b> 819 aa, 88 kDa	
	<b>Observed MW:</b> 95 kDa	

## Applications

<b>Tested Applications:</b> WB, ELISA	<b>Positive Controls:</b> WB : L02 cells, human heart tissue
<b>Species Specificity:</b> human	

## Background Information

Cardiac myosin light chain kinase (cMLCK) encoded by the myosin light chain kinase 3 (MYLK3) phosphorylates cardiac myosin light chain 2 (MLC2, encoded by MYL2) and facilitates actin-myosin interactions that enhance contractile force in the animal heart (PMID: 29235529).

## Storage

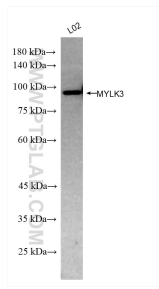
**Storage:**  
Store at -20°C. Stable for one year after shipment.  
**Storage Buffer:**  
PBS with 0.02% sodium azide and 50% glycerol pH 7.3.  
Aliquoting is unnecessary for -20°C storage

\*\*\* 20ul sizes contain 0.1% BSA

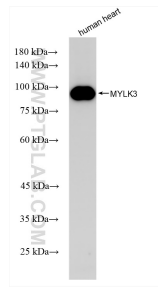
For technical support and original validation data for this product please contact:  
T: 1 (888) 4PTGLAB (1-888-478-4522) (toll free in USA), or 1(312) 455-8498 (outside USA)  
E: [proteintech@ptglab.com](mailto:proteintech@ptglab.com)  
W: [ptglab.com](http://ptglab.com)

This product is exclusively available under Proteintech Group brand and is not available to purchase from any other manufacturer.

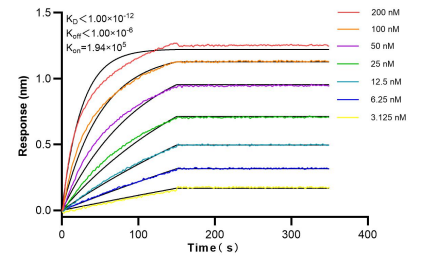
## Selected Validation Data



L02 cells were subjected to SDS PAGE followed by western blot with 83673-3-RR (MYLK3 antibody) at dilution of 1:2000 incubated at room temperature for 1.5 hours.



human heart tissue were subjected to SDS PAGE followed by western blot with 83673-3-RR (MYLK3 antibody) at dilution of 1:2000 incubated at room temperature for 1.5 hours.



Bi-layer interferometry (BLI) kinetic assays of 83673-3-RR against Human MYLK3 were performed. The affinity constant is below 1 pM.