

For Research Use Only

UQCRC1 Recombinant antibody

Catalog Number:83671-2-RR



Basic Information

Catalog Number: 83671-2-RR	GenBank Accession Number: BC009586	Purification Method: Protein A purification
Size: 100ul , Concentration: 1000 µg/ml by Nanodrop;	GeneID (NCBI): 7384	CloneNo.: 240507A6
Source: Rabbit	UNIPROT ID: P31930	Recommended Dilutions: WB 1:5000-1:50000 IHC 1:1000-1:4000
Isotype: IgG	Full Name: ubiquinol-cytochrome c reductase core protein I	
Immunogen Catalog Number: AG16322	Calculated MW: 480 aa, 53 kDa	
	Observed MW: 45 kDa	

Applications

Tested Applications:

WB, IHC, ELISA

Species Specificity:

human, mouse, rat

Note-IHC: suggested antigen retrieval with TE buffer pH 9.0; (*) Alternatively, antigen retrieval may be performed with citrate buffer pH 6.0

Positive Controls:

WB : HeLa cells, L02 cells, HepG2 cells, mouse brain tissue, mouse liver tissue, rat brain tissue, rat liver tissue

IHC : human stomach cancer tissue,

Background Information

UQCRC1(Cytochrome b-c1 complex subunit 1, mitochondrial), also named as QCR1 and UQCR1, is a subunit of the cytochrome bc1 complex (complex III) of the mitochondrial respiratory chain, may mediate the formation of the complex between cytochromes c and c1. The gene encodes a 53 kDa protein with a 34 amino acids transit peptide. It is associated with apoptosis or inhibition of cancer cell growth.

Storage

Storage:

Store at -20°C. Stable for one year after shipment.

Storage Buffer:

PBS with 0.02% sodium azide and 50% glycerol pH 7.3.

Aliquoting is unnecessary for -20°C storage

*** 20ul sizes contain 0.1% BSA

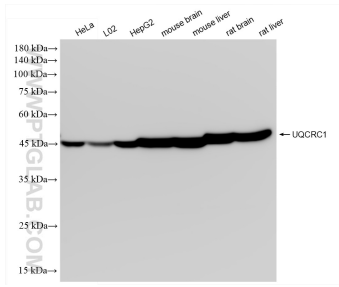
For technical support and original validation data for this product please contact:

T: 1 (888) 4PTGLAB (1-888-478-4522) (toll free in USA), or 1(312) 455-8498 (outside USA)

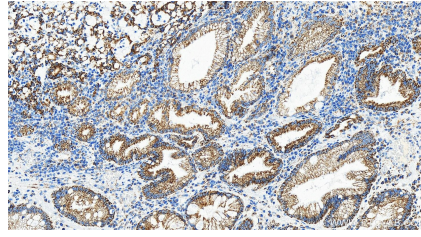
E: proteintech@ptglab.com
W: ptglab.com

This product is exclusively available under Proteintech Group brand and is not available to purchase from any other manufacturer.

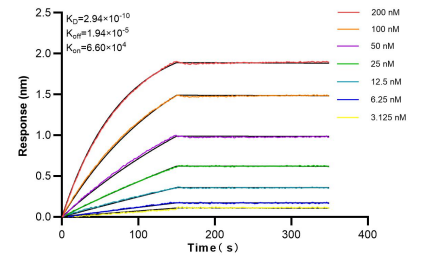
Selected Validation Data



Various lysates were subjected to SDS PAGE followed by western blot with 83671-2-RR (UQCRC1 antibody) at dilution of 1:10000 incubated at room temperature for 1.5 hours.



Immunohistochemical analysis of paraffin-embedded human stomach cancer tissue slide using 83671-2-RR (UQCRC1 antibody) at dilution of 1:2000 (under 20x lens). Heat mediated antigen retrieval with Tris-EDTA buffer(pH9).



Bi-layer interferometry (BLI) kinetic assays of 83671-2-RR against Human UQCRC1 were performed. The affinity constant is 0.294 nM.