

For Research Use Only

DLAT Recombinant antibody, PBS Only (Capture)

Catalog Number: 83654-3-PBS



Basic Information

Catalog Number: 83654-3-PBS	GenBank Accession Number: BC039084	Purification Method: Protein A purification
Size: 100ug, Concentration: 1 mg/ml by Nanodrop;	GeneID (NCBI): 1737	CloneNo.: 240713C12
Source: Rabbit	UNIPROT ID: P10515	
Isotype: IgG	Full Name: dihydrolipoamide S-acetyltransferase	
Immunogen Catalog Number: AG22831	Calculated MW: 647 aa, 70 kDa	
	Observed MW: 69-70 kDa	

Applications

Tested Applications:
WB, IHC, IF/ICC, FC (Intra), Cytometric bead array, Sandwich ELISA, Indirect ELISA, Sample test

Species Specificity:
human, mouse, rat

Product Information

83654-3-PBS targets DLAT as part of a matched antibody pair:

MP00635-2: 83654-3-PBS capture and 83654-1-PBS detection (validated in Cytometric bead array)

MP00635-3: 83654-3-PBS capture and 83654-2-PBS detection (validated in Cytometric bead array)

MP00635-4: 83654-3-PBS capture and 83654-5-PBS detection (validated in Sandwich ELISA)

Unconjugated rabbit recombinant monoclonal antibody in PBS only (BSA and azide free) storage buffer at a concentration of 1 mg/mL, ready for conjugation. Created using Proteintech's proprietary in-house recombinant technology. Recombinant production enables unrivalled batch-to-batch consistency, easy scale-up, and future security of supply.

This conjugation ready format makes antibodies ideal for use in many applications including: ELISAs, multiplex assays requiring matched pairs, mass cytometry, and multiplex imaging applications. Antibody use should be optimized by the end user for each application and assay.

Storage

Storage:
Store at -80°C.
Storage Buffer:
PBS Only

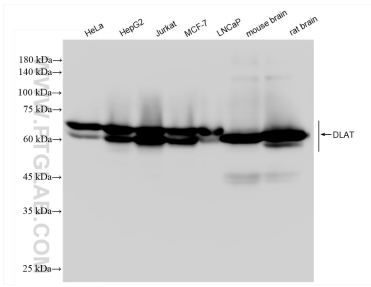
For technical support and original validation data for this product please contact:

T: 1 (888) 4PTGLAB (1-888-478-4522) (toll free in USA), or 1(312) 455-8498 (outside USA)

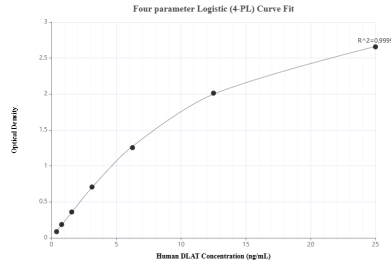
E: proteintech@ptglab.com
W: ptglab.com

This product is exclusively available under Proteintech Group brand and is not available to purchase from any other manufacturer.

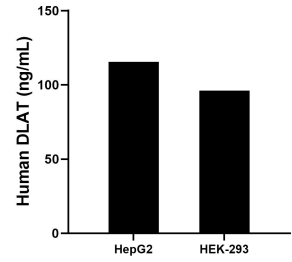
Selected Validation Data



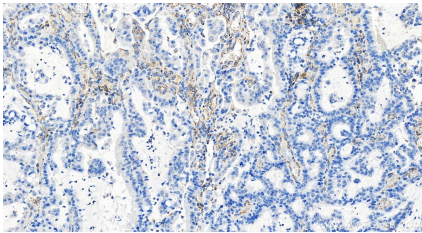
Various lysates were subjected to SDS PAGE followed by western blot with 83654-3-RR (DLAT antibody) at dilution of 1:10000 incubated at room temperature for 1.5 hours. This data was developed using the same antibody clone with 83654-3-PBS in a different storage buffer formulation.



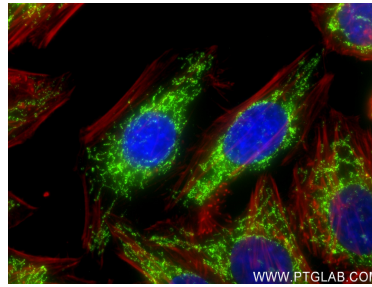
Sandwich ELISA standard curve of MP00635-4, Human DLAT Recombinant Matched Antibody Pair - PBS only. 83654-3-PBS was coated to a plate as the capture antibody and incubated with serial dilutions of standard Ag22831. 83654-5-PBS was HRP conjugated as the detection antibody. Range: 0.391-25 ng/mL



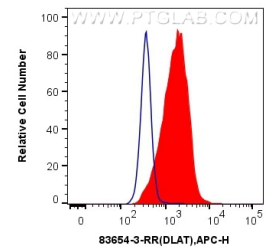
The mean DLAT concentration was determined to be 115.60 ng/mL in HepG2 cell extract based on a 1.2 mg/mL extract load and 96.07 ng/mL in HEK-293 cell extract based on a 2.3 mg/mL extract load.



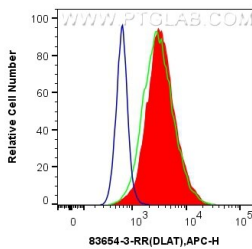
Immunohistochemical analysis of paraffin-embedded human stomach cancer tissue slide using 83654-3-RR (DLAT antibody) at dilution of 1:500 (under 20x lens). Heat mediated antigen retrieval with Tris-EDTA buffer(pH9). This data was developed using the same antibody clone with 83654-3-PBS in a different storage buffer formulation.



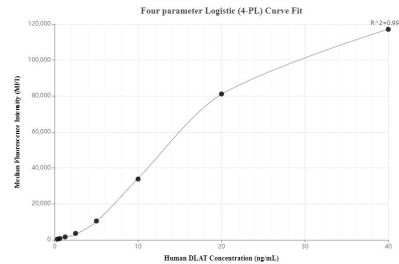
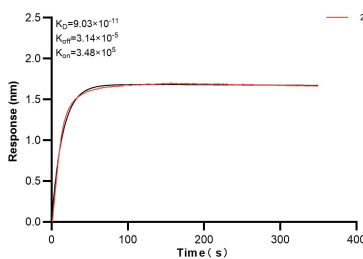
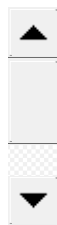
Immunofluorescent analysis of (4% PFA) fixed HepG2 cells using DLAT antibody (83654-3-RR, Clone: 240713C12) at dilution of 1:250 and CoraLite®488-Conjugated AffiniPure Goat Anti-Rabbit IgG(H+L) (SA00013-2), CL594-Phalloidin (red). This data was developed using the same antibody clone with 83654-3-PBS in a different storage buffer formulation.



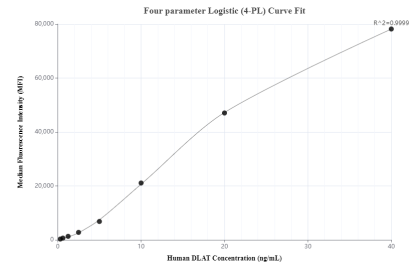
1x10⁶ HepG2 cells were intracellularly stained with 0.25 ug DLAT Recombinant Antibody (83654-3-RR, Clone:240713C12) and APC-Conjugated AffiniPure Goat Anti-Rabbit IgG(H+L)(red), or 0.25 ug Isotype Control (blue). Cells were fixed with 4% PFA and permeabilized with Flow Cytometry Perm Buffer (PF00011-C). This data was developed using the same antibody clone with 83654-3-PBS in a different storage buffer formulation.



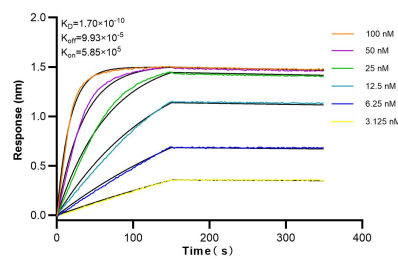
1x10⁶ HeLa cells were intracellularly stained with 0.25 ug DLAT Recombinant antibody (83654-3-RR, Clone:240713C12) and APC-Conjugated Goat Anti-Rabbit IgG(H+L)(red), or 0.25 ug Rabbit IgG Isotype Control RecAb (98136-1-RR, Clone: 240953C9) (blue), or 0.25 ug DLAT Recombinant antibody (83654-3-RR, Clone: 240713C12) (green). Cells were fixed with 4% PFA and permeabilized with Flow Cytometry Perm Buffer (PF00011-C). This



Cytometric bead array standard curve of MP00635-2, DLAT Recombinant Matched Antibody Pair, PBS Only. Capture antibody: 83654-3-PBS. Detection antibody: 83654-1-PBS. Standard: Ag22831. Range: 0.313-40 ng/mL



Cytometric bead array standard curve of MP00635-3, DLAT Recombinant Matched Antibody Pair, PBS Only. Capture antibody: 83654-3-PBS. Detection antibody: 83654-2-PBS. Standard: Ag22831. Range: 0.313-40 ng/mL



Biolayer interferometry (BLI) kinetic assay of 83654-3-PBS against Human DLAT was performed. The affinity constant is 90.3 pM.

Biolayer interferometry (BLI) kinetic assays of 83654-3-RR against Human DLAT were performed. The affinity constant is 0.17 nM.