

For Research Use Only

DLAT Recombinant antibody, PBS Only (Capture/Detector)



Catalog Number: 83654-1-PBS

Basic Information

Catalog Number: 83654-1-PBS	GenBank Accession Number: BC039084	Purification Method: Protein A purification
Size: 100ug , Concentration: 1 mg/ml by Nanodrop;	GeneID (NCBI): 1737	CloneNo.: 240713C3
Source: Rabbit	UNIPROT ID: P10515	
Isotype: IgG	Full Name: dihydrolipoamide S-acetyltransferase	
Immunogen Catalog Number: AG22831	Calculated MW: 647 aa, 70 kDa	

Applications

Tested Applications:
Indirect ELISA, Cytometric bead array

Species Specificity:
Human

Product Information

83654-1-PBS targets DLAT as part of a matched antibody pair:

MP00635-1: 83654-1-PBS capture and 83654-2-PBS detection (validated in Cytometric bead array)

MP00635-2: 83654-3-PBS capture and 83654-1-PBS detection (validated in Cytometric bead array)

Unconjugated rabbit recombinant monoclonal antibody in PBS only (BSA and azide free) storage buffer at a concentration of 1 mg/mL, ready for conjugation. Created using Proteintech's proprietary in-house recombinant technology. Recombinant production enables unrivalled batch-to-batch consistency, easy scale-up, and future security of supply.

This conjugation ready format makes antibodies ideal for use in many applications including: ELISAs, multiplex assays requiring matched pairs, mass cytometry, and multiplex imaging applications. Antibody use should be optimized by the end user for each application and assay.

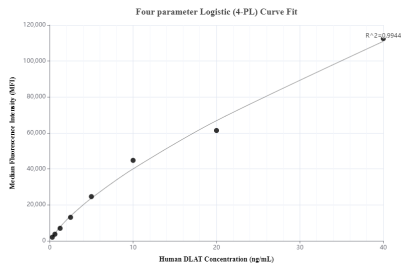
Storage

Storage:
Store at -80°C.
Storage Buffer:
PBS Only

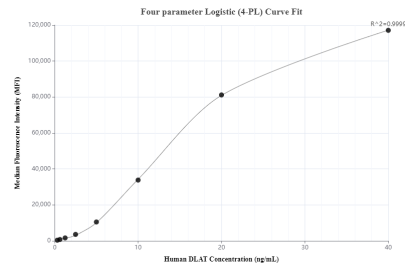
For technical support and original validation data for this product please contact:
T: 1 (888) 4PTGLAB (1-888-478-4522) (toll free in USA), or 1(312) 455-8498 (outside USA) E: proteintech@ptglab.com W: ptglab.com

This product is exclusively available under Proteintech Group brand and is not available to purchase from any other manufacturer.

Selected Validation Data



Cytometric bead array standard curve of MP00635-1, DLAT Recombinant Matched Antibody Pair, PBS Only. Capture antibody: 83654-1-PBS. Detection antibody: 83654-2-PBS. Standard: Ag22831. Range: 0.313-40 ng/mL



Cytometric bead array standard curve of MP00635-2, DLAT Recombinant Matched Antibody Pair, PBS Only. Capture antibody: 83654-3-PBS. Detection antibody: 83654-1-PBS. Standard: Ag22831. Range: 0.313-40 ng/mL