

For Research Use Only

CEA/CD66e Recombinant antibody, PBS Only

Catalog Number: 83653-5-PBS



Basic Information

Catalog Number: 83653-5-PBS	GenBank Accession Number: NM_004363	Purification Method: Protein A purification
Size: 100ug, Concentration: 1 mg/ml by Nanodrop;	GeneID (NCBI): 1048	CloneNo.: 240666B12
Source: Rabbit	UNIPROT ID: P06731-1	
Isotype: IgG	Full Name: carcinoembryonic antigen-related cell adhesion molecule 5	
	Calculated MW: 77 kDa	
	Observed MW: 200 kDa	

Applications

Tested Applications:
WB, IHC, IF/ICC, ELISA

Species Specificity:
human

Background Information

Carcinoembryonic antigen (CEA), also known as CEACAM5 or CD66e, is a cell surface glycoprotein belonging to the immunoglobulin superfamily, mainly serving as a cell adhesion molecule mediating intercellular contact by both homophilic and heterophilic binding (PMID: 21731662). CEA inhibits anoikis and plays a role in tumorigenesis and metastasis. CEA has been found to be overexpressed in a wide variety of human cancers, including colon, breast, and lung (PMID: 17167768). CEA is a tumor marker and is routinely exploited for diagnosis. This antibody is raised against 35-685 aa of human CEA/CD66e and can cross-react with CEACAM1/CD66a and CEACAM3/CD66d.

Storage

Storage:
Store at -80°C.

Storage Buffer:
PBS Only

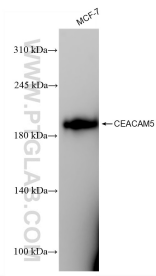
For technical support and original validation data for this product please contact:

T: 1 (888) 4PTGLAB (1-888-478-4522) (toll free in USA), or 1(312) 455-8498 (outside USA)

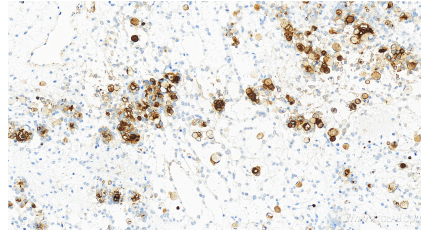
E: proteintech@ptglab.com
W: ptglab.com

This product is exclusively available under Proteintech Group brand and is not available to purchase from any other manufacturer.

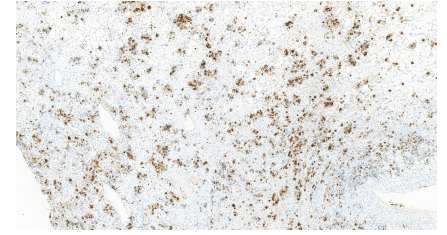
Selected Validation Data



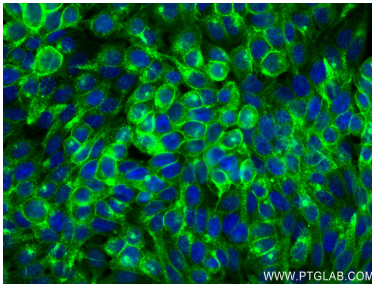
MCF-7 cells were subjected to SDS PAGE followed by western blot with 83653-5-RR (CEA antibody) at dilution of 1:10000 incubated at room temperature for 1.5 hours. This data was developed using the same antibody clone with 83653-5-PBS in a different storage buffer formulation.



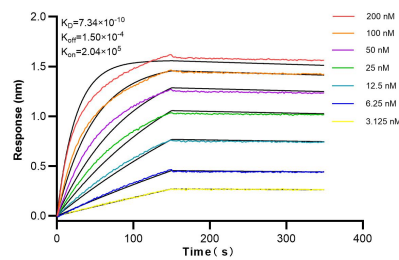
Immunohistochemical analysis of paraffin-embedded human ovary cancer tissue slide using 83653-5-RR (CEA antibody) at dilution of 1:1000 (under 40x lens). Heat mediated antigen retrieval with Tris-EDTA buffer (pH 9.0). This data was developed using the same antibody clone with 83653-5-PBS in a different storage buffer formulation.



Immunohistochemical analysis of paraffin-embedded human ovary cancer tissue slide using 83653-5-RR (CEA antibody) at dilution of 1:1000 (under 10x lens). Heat mediated antigen retrieval with Tris-EDTA buffer (pH 9.0). This data was developed using the same antibody clone with 83653-5-PBS in a different storage buffer formulation.



Immunofluorescent analysis of (4% PFA) fixed HT-29 cells using CEA antibody (83653-5-RR, Clone: 240666B12) at dilution of 1:250 and Coralite@488-Conjugated AffiniPure Goat Anti-Rabbit IgG(H+L) (SA00013-2). This data was developed using the same antibody clone with 83653-5-PBS in a different storage buffer formulation.



Biolayer interferometry (BLI) kinetic assays of 83653-5-RR against Human CEA were performed. The affinity constant is 0.734 nM.