

For Research Use Only

CEA/CD66e Recombinant antibody, PBS Only (Detector)

Catalog Number: 83653-3-PBS



Basic Information

Catalog Number: 83653-3-PBS	GenBank Accession Number: NM_004363	Purification Method: Protein A purification
Size: 100ug, Concentration: 1 mg/ml by Nanodrop;	GeneID (NCBI): 1048	CloneNo.: 240666C12
Source: Rabbit	UNIPROT ID: P06731-1	
Isotype: IgG	Full Name: carcinoembryonic antigen-related cell adhesion molecule 5	
	Calculated MW: 77 kDa	

Applications

Tested Applications:
Cytometric bead array, Sandwich ELISA, Indirect ELISA, Sample test

Species Specificity:
human

Product Information

83653-3-PBS targets CEA/CD66e as part of a matched antibody pair:

MP00626-1: 83653-4-PBS capture and 83653-3-PBS detection (validated in Cytometric bead array)

MP00626-2: 83653-2-PBS capture and 83653-3-PBS detection (validated in Cytometric bead array)

MP00626-3: 83653-1-PBS capture and 83653-3-PBS detection (validated in Cytometric bead array, Sandwich ELISA)

Unconjugated rabbit recombinant monoclonal antibody in PBS only (BSA and azide free) storage buffer at a concentration of 1 mg/mL, ready for conjugation. Created using Proteintech's proprietary in-house recombinant technology. Recombinant production enables unrivalled batch-to-batch consistency, easy scale-up, and future security of supply.

This conjugation ready format makes antibodies ideal for use in many applications including: ELISAs, multiplex assays requiring matched pairs, mass cytometry, and multiplex imaging applications. Antibody use should be optimized by the end user for each application and assay.

Storage

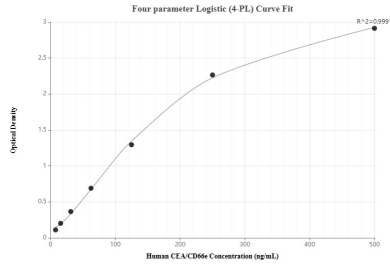
Storage:
Store at -80°C.

Storage Buffer:
PBS Only

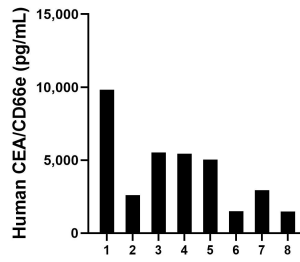
For technical support and original validation data for this product please contact:
T: 1 (888) 4PTGLAB (1-888-478-4522) (toll free in USA), or 1(312) 455-8498 (outside USA) E: proteintech@ptglab.com
W: ptglab.com

This product is exclusively available under Proteintech Group brand and is not available to purchase from any other manufacturer.

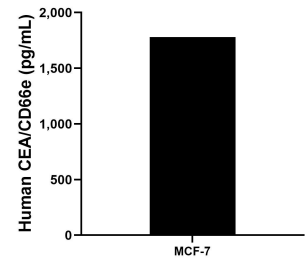
Selected Validation Data



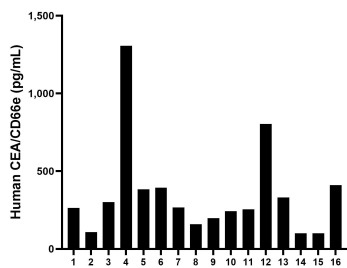
Sandwich ELISA standard curve of MP00626-3, Human CEA/CD66e Recombinant Matched Antibody Pair - PBS only. 83653-1-PBS was coated to a plate as the capture antibody and incubated with serial dilutions of standard Eg0449. 83653-3-PBS was HRP conjugated as the detection antibody. Range: 7.8-500 pg/mL



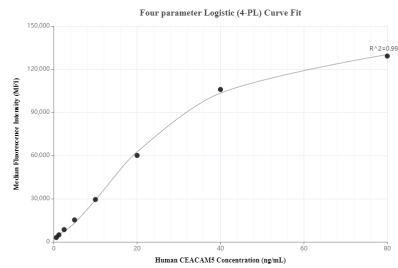
Saliva of eight individual healthy human donors was measured. The human CEA/CD66e concentration of detected samples was determined to be 4,297.5 pg/mL with a range of 1,476.6 - 9,827.4 pg/mL.



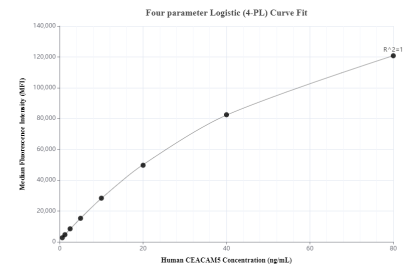
The mean CEA/CD66e concentration was determined to be 1,780.9 pg/mL in MCF-7 cell extract based on a 1.5 mg/mL extract load.



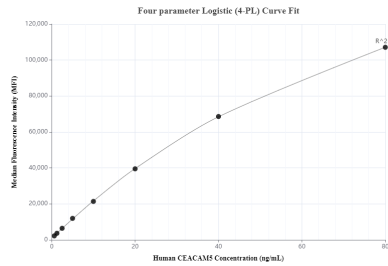
Serum of sixteen individual healthy human donors was measured. The human CEA/CD66e concentration of detected samples was determined to be 351.5 pg/mL with a range of 100.4 - 1,305.8 pg/mL.



Cytometric bead array standard curve of MP00626-1, CEA/CD66e Recombinant Matched Antibody Pair, PBS Only. Capture antibody: 83653-4-PBS. Detection antibody: 83653-3-PBS. Standard: Eg0449. Range: 0.625-80 ng/mL.



Cytometric bead array standard curve of MP00626-2, CEA/CD66e Recombinant Matched Antibody Pair, PBS Only. Capture antibody: 83653-2-PBS. Detection antibody: 83653-3-PBS. Standard: Eg0449. Range: 0.625-80 ng/mL.



Cytometric bead array standard curve of MP00626-3, CEA/CD66e Recombinant Matched Antibody Pair, PBS Only. Capture antibody: 83653-1-PBS. Detection antibody: 83653-3-PBS. Standard: Eg0449. Range: 0.625-80 ng/mL.