

For Research Use Only

SLC5A8 Recombinant antibody, PBS Only (Detector)



Catalog Number: 83652-2-PBS

Basic Information

Catalog Number: 83652-2-PBS	GenBank Accession Number: BC110492	Purification Method: Protein A purification
Size: 100ug , Concentration: 1 mg/ml by Nanodrop;	GeneID (NCBI): 160728	CloneNo.: 240592F10
Source: Rabbit	UNIPROT ID: Q8N695	
Isotype: IgG	Full Name: solute carrier family 5 (iodide transporter), member 8	
Immunogen Catalog Number: AG30183	Calculated MW: 610 aa, 67 kDa	

Applications

Tested Applications:
Indirect ELISA, Cytometric bead array

Species Specificity:
Human

Product Information

83652-2-PBS targets SLC5A8 as part of a matched antibody pair:

MP00625-1: 83652-1-PBS capture and 83652-2-PBS detection (validated in Cytometric bead array)

Unconjugated rabbit recombinant monoclonal antibody in PBS only (BSA and azide free) storage buffer at a concentration of 1 mg/mL, ready for conjugation. Created using Proteintech's proprietary in-house recombinant technology. Recombinant production enables unrivalled batch-to-batch consistency, easy scale-up, and future security of supply.

This conjugation ready format makes antibodies ideal for use in many applications including: ELISAs, multiplex assays requiring matched pairs, mass cytometry, and multiplex imaging applications. Antibody use should be optimized by the end user for each application and assay.

Storage

Storage:
Store at -80°C.

Storage Buffer:
PBS Only

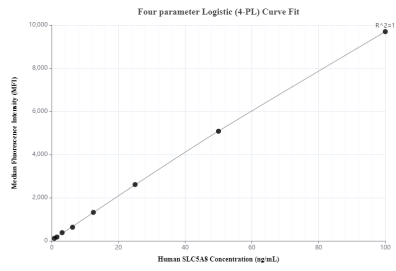
For technical support and original validation data for this product please contact:

T: 1 (888) 4PTGLAB (1-888-478-4522) (toll free in USA), or 1(312) 455-8498 (outside USA)

E: proteintech@ptglab.com
W: ptglab.com

This product is exclusively available under Proteintech Group brand and is not available to purchase from any other manufacturer.

Selected Validation Data



Cytometric bead array standard curve of MP00625-1, SLC5A8 Recombinant Matched Antibody Pair, PBS Only. Capture antibody: 83652-1-PBS. Detection antibody: 83652-2-PBS. Standard: Ag30183. Range: 0.78-100 ng/mL