

For Research Use Only

RNASET2 Recombinant antibody, PBS Only (Detector)

Catalog Number:83650-1-PBS



Basic Information

Catalog Number: 83650-1-PBS	GenBank Accession Number: BC039713	Purification Method: Protein A purification
Size: 100ug, Concentration: 1 mg/ml by Nanodrop;	GeneID (NCBI): 8635	CloneNo.: 240581C4
Source: Rabbit	UNIPROT ID: O00584	
Isotype: IgG	Full Name: ribonuclease T2	
Immunogen Catalog Number: AG28353	Calculated MW: 256 aa, 29 kDa	

Applications

Tested Applications:
WB, Cytometric bead array, Sandwich ELISA, Indirect ELISA, Sample test

Species Specificity:
human

Product Information

83650-1-PBS targets RNASET2 as part of a matched antibody pair:

MP00620-1: 83650-2-PBS capture and 83650-1-PBS detection (validated in Cytometric bead array, Sandwich ELISA)

Unconjugated rabbit recombinant monoclonal antibody in PBS only (BSA and azide free) storage buffer at a concentration of 1 mg/mL, ready for conjugation. Created using Proteintech's proprietary in-house recombinant technology. Recombinant production enables unrivalled batch-to-batch consistency, easy scale-up, and future security of supply.

This conjugation ready format makes antibodies ideal for use in many applications including: ELISAs, multiplex assays requiring matched pairs, mass cytometry, and multiplex imaging applications. Antibody use should be optimized by the end user for each application and assay.

Storage

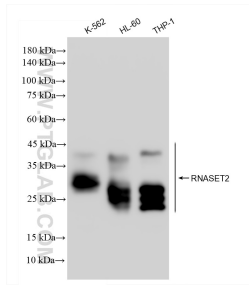
Storage:
Store at -80°C.

Storage Buffer:
PBS Only

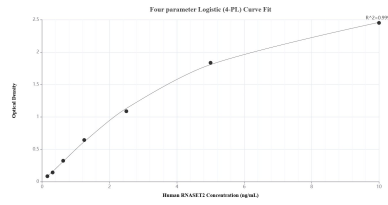
For technical support and original validation data for this product please contact:
T: 1 (888) 4PTGLAB (1-888-478-4522) (toll free in USA), or 1(312) 455-8498 (outside USA) E: proteintech@ptglab.com
W: ptglab.com

This product is exclusively available under Proteintech Group brand and is not available to purchase from any other manufacturer.

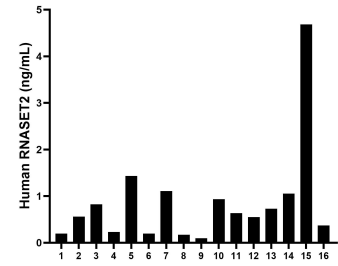
Selected Validation Data



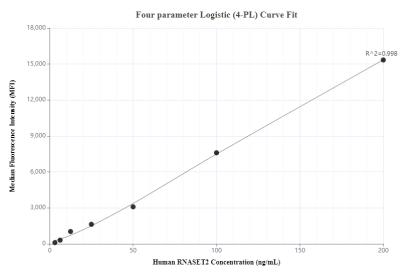
Various lysates were subjected to SDS PAGE followed by western blot with 83650-1-RR (RNASET2 antibody) at dilution of 1:1000 incubated at room temperature for 1.5 hours. This data was developed using the same antibody clone with 83650-1-PBS in a different storage buffer formulation.



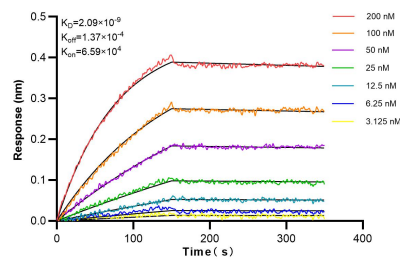
Sandwich ELISA standard curve of MP00620-1, Human RNASET2 Recombinant Matched Antibody Pair - PBS only. 83650-2-PBS was coated to a plate as the capture antibody and incubated with serial dilutions of standard Ag28353. 83650-1-PBS was HRP conjugated as the detection antibody. Range: 0.156-10 ng/mL.



Serum of sixteen individual healthy human donors was measured. The RNASET2 concentration of detected samples was determined to be 0.86 ng/mL with a range of 0.10-4.68 ng/mL.



Cytometric bead array standard curve of MP00620-1, RNASET2 Recombinant Matched Antibody Pair, PBS Only. Capture antibody: 83650-2-PBS. Detection antibody: 83650-1-PBS. Standard: Ag28353. Range: 3.125-200 ng/mL.



Bilayer interferometry (BLI) kinetic assays of 83650-1-RR against Human RNASET2 were performed. The affinity constant is 2.09 nM.