

For Research Use Only

SWAP70 Recombinant antibody

Catalog Number:83646-6-RR



Basic Information

Catalog Number: 83646-6-RR	GenBank Accession Number: BC000616	Purification Method: Protein A purification
Size: 100ul , Concentration: 1000 ug/ml by Nanodrop;	GeneID (NCBI): 23075	CloneNo.: 240641F5
Source: Rabbit	UNIPROT ID: Q9UH65	Recommended Dilutions: WB 1:5000-1:50000 IHC 1:250-1:1000
Isotype: IgG	Full Name: SWAP-70 protein	
Immunogen Catalog Number: AG34855	Calculated MW: 69 kDa	
	Observed MW: 65-70 kDa	

Applications

Tested Applications:
WB, IHC, FC (Intra), ELISA

Species Specificity:
human, mouse

Note-IHC: suggested antigen retrieval with TE buffer pH 9.0; (*) Alternatively, antigen retrieval may be performed with citrate buffer pH 6.0

Positive Controls:

WB : HeLa cells, HepG2 cells, NIH/3T3 cells, Daudi cells, NIC-H1299 cells, HEK-293 cells, A549 cells

IHC : mouse spleen tissue,

Background Information

SWAP70 (switching B cell complex subunit), also known as HSPC321. It is expected to be located in cell membrane, cytoplasm and nucleus, the protein is mainly expressed in spleen, and fairly abundant in kidney, lung and liver. Also found in monocytes, macrophages and mature B-cells (PMID: 10681448). The calculated molecular weight of SWAP70 is 69 kDa. SWAP-70 is a component of an enzyme complex that recombines Ig switch regions in vitro. It is reported that the cloning of the human cDNA and its B lymphocyte-specific expression. Although its sequence contains three nuclear localization signals, in small resting B cells, SWAP-70 is mainly found in the cytoplasm. On stimulation, SWAP-70 translocates to the nucleus. In activated, class-switching B cell cultures, it is associated with membrane IgG, but not IgM. The membrane Ig association requires a functional pleckstrin homology domain and is controlled by the C terminus. It is suggested that SWAP-70 is involved not only in nuclear events but also in signaling in B cell activation (PMID: 10681448).

Storage

Storage:
Store at -20°C. Stable for one year after shipment.
Storage Buffer:
PBS with 0.02% sodium azide and 50% glycerol pH 7.3.
Aliquoting is unnecessary for -20°C storage

*** 20ul sizes contain 0.1% BSA

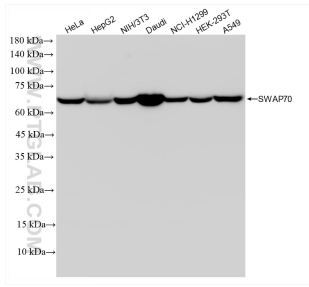
For technical support and original validation data for this product please contact:

T: 1 (888) 4PTGLAB (1-888-478-4522) (toll free in USA), or 1(312) 455-8498 (outside USA)

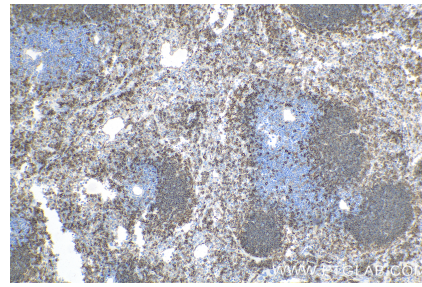
E: proteintech@ptglab.com
W: ptglab.com

This product is exclusively available under Proteintech Group brand and is not available to purchase from any other manufacturer.

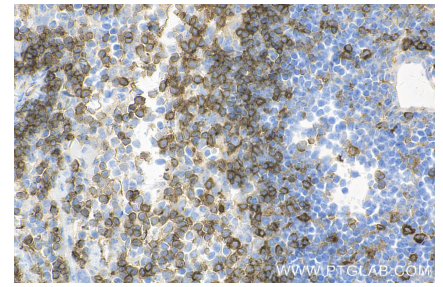
Selected Validation Data



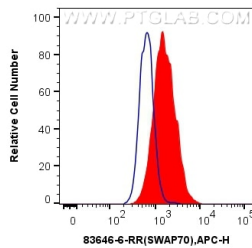
Various lysates were subjected to SDS PAGE followed by western blot with 83646-6-RR (SWAP70 antibody) at dilution of 1:10000 incubated at room temperature for 1.5 hours.



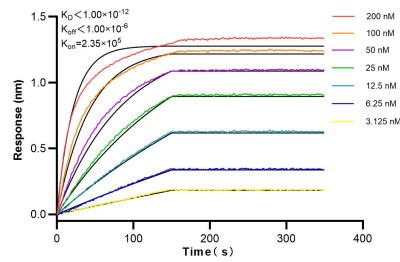
Immunohistochemical analysis of paraffin-embedded mouse spleen tissue slide using 83646-6-RR (SWAP70 antibody) at dilution of 1:500 (under 10x lens). Heat mediated antigen retrieval with Tris-EDTA buffer (pH 9.0).



Immunohistochemical analysis of paraffin-embedded mouse spleen tissue slide using 83646-6-RR (SWAP70 antibody) at dilution of 1:500 (under 40x lens). Heat mediated antigen retrieval with Tris-EDTA buffer (pH 9.0).



1×10^6 SK-N-SH cells were intracellularly stained with 0.25 μ g SWAP70 Recombinant antibody (83646-6-RR, Clone:240641F5) and APC-Conjugated AffiniPure Goat Anti-Rabbit IgG(H+L) (red), or 0.25 μ g Isotype Control (blue). Cells were fixed with 4% PFA and permeabilized with Flow Cytometry Perm Buffer (PF00011-C).



Biacore interferometry (BLI) kinetic assays of 83646-6-RR against Human SWAP70 were performed. The affinity constant is below 1 pM.